

**3 Bedroom(s), Detached Bungalow, Freehold**

**Harcourt Close, Bessacarr, Doncaster.**



- 3D Virtual Tour Available
- Spacious Lounge With Bifold Doors Looking Out To The Garden
- Third Bedroom Converted Into Utility Area And W/C
- Space For Multiple Cars to Park
- Rear Enclosed Garden With Patio Area
- Kitchen
- Three Bed Detached Bungalow
- Wet Room Family Bathroom
- Garage
- Sought After Area in Bessacarr

**£277,500**  
**For Sale**

*Book your viewing today* Tel: 01302 247754

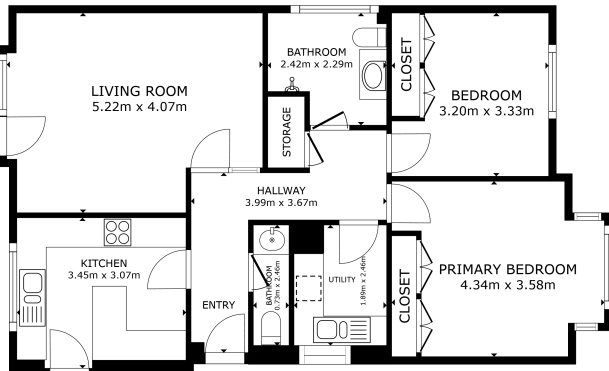


## Owner's View

Situated in the highly desirable residential area of Bessacarr, Doncaster, this well-presented three-bedroom detached bungalow offers comfortable and versatile living. The property comprises a spacious living area with Bifold doors opening out onto the rear garden, allowing natural light to flood the space. A separate kitchen provides direct access to the attached garage, offering additional storage. The third bedroom has been converted into a useful utility room and separate W/C add practicality to everyday living. There are two more generous sized bedrooms. The family bathroom is a modern wet room. Outside, the property benefits from a private driveway and an enclosed rear garden, ideal for relaxing or entertaining. This bungalow is close to local amenities, public transport links, and excellent road access—making it a must-see home in a peaceful and established neighborhood.

## Internals

### Floor Plan



GROSS INTERNAL AREA  
FLOOR PLAN 79.2 sq m  
TOTAL: 79.2 sq m  
SIZES AND DIMENSIONS ARE APPROXIMATE, ACTUAL MAY VARY

Matterport

### Kitchen



### Lounge



### Bedroom One



### Bedroom Two



### Bedroom Three Converted Into Utility And W/C







**Family Bathroom**



**Externals**

**Front Aspect**



**Rear Aspect**



## Property Information

Council Tax Band - C

Utilities - Mains Gas, Mains Electricity, Mains Water

Water Meter -

Tenure -

Solar Panels -

Space Heating System -

Approximate Heating System Installation Date -

Water Heating System -

Approximate Water Heating Installation Date -

Boiler Location -

Approximate Electrical System Installation Date -

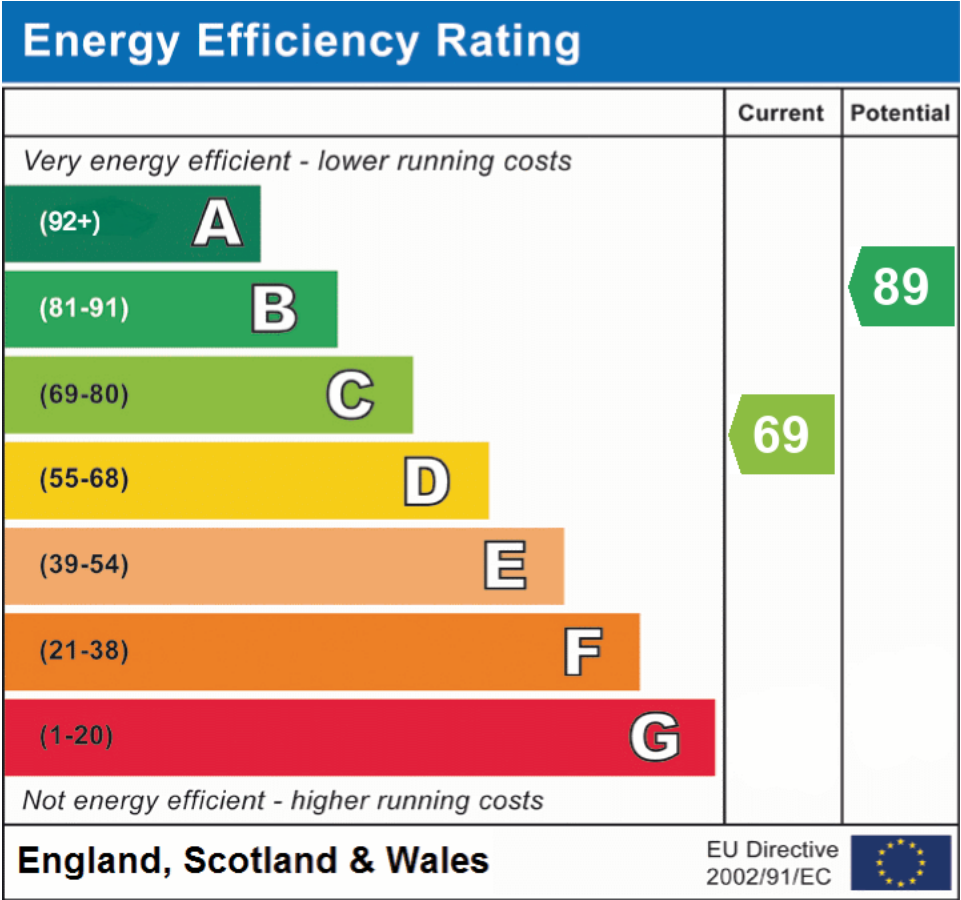
Permanent Loft Ladder -

Loft Insulation -

Loft Boarded out -

Whilst every effort is made to ensure that the information contained in these particulars is reliable, they do not constitute or form part of an offer or any contract. The Property Hive accept no liability for the accuracy of the contents, and therefore they should be independently verified by prospective buyers or tenants before agreeing an offer. All measurements provided are approximate and should be verified before exchange of contracts. No appliances, fixtures or fittings have been tested and should be checked by the buyer before exchange of contracts to ensure they are in good working order.

## Energy Performance Certificate



All measurements provided are approximate and should be verified before exchange of contracts. No appliances have been tested and should be checked to ensure they are in good working order.