



18 Top Fair Furlong, Redhouse Park, Milton Keynes, Buckinghamshire, MK14 5FT

£415,000 Freehold

- Immaculate Family Home
- Four Double Bedrooms with En-suite To Master
- Estimated Completion September / October
- Parking for Two Cars
- Downstairs Cloakroom & Under Stairs Storage
- Stunning Feature Fireplace
- Show Home Condition Throughout
- Extended with bi-fold doors
- EPC Rating





Entrance

Via part double glazed door to;

Entrance Hallway

Stairs rising to first floor, Karndean flooring in a herringbone pattern, Electric fuse board, Under stairs storage cupboards, Double glazed window, doors to:

Downstairs Cloak

Low Level W/C, Wall mounted basin, Tiled floor and Accent Wall, Downlighting

Kitchen

3.708m x 2.132m (12' 2" x 7' 0")

One and a Half Stainless Steel sink plus a further range of base and wall mounted units in a Matt and high gloss finish, Induction Hob Splash Back and Extractor, Integrated Multi-Functional Microwave Integrated Bosch Dishwasher, Integrated Washing Machine, Integrated Fridge Freezer, Porcelain Tiled Floor, Downlighting

Lounge/Diner

6.451m x 4.477m (21' 2" x 14' 8")

Karndean Flooring in Herringbone Pattern, Feature Fireplace, Vertical Radiators, Bifold Doors to rear garden

Bedroom One

3.633m x 3.411m (11' 11" x 11' 2")

Fitted High gloss triple wardrobe, Double Glazed Dormer Windows, Radiator, Access to En-suite

En Suite

Three piece suite comprising, Shower Tray and Cubicle, Wall Mounted Basin, Chrome Towel Radiator, Double Glazed Roof Window, Porcelanosa Tiling to Water sensitive Areas

Bedroom Two

2.887m x 3.798m (9' 6" x 12' 6")

Fitted Double Wardrobe with a High Gloss Finish, Double Glazed Window, Radiator, Ornate Panelling to feature Wall

Family Bathroom

3 Piece Suite Comprising, Wooden Panelled bath with Shower over and Glass Screen Door, Low Level W/C, Wall Mounted Basin with Vanity Unit under, Chrome Towel Radiator Porcelanosa Tiling and Sanitary Ware, Downlighting, Double Glazed Frosted Window

Bedroom Three

3.745m x 2.647m (12' 3" x 8' 8")

Double Glazed Windows, Built in double wardrobe, Radiator, Ornate Panelling to feature Wall

Bedroom 4

2.652m x 2.589m (8' 8" x 8' 6")

Double Glazed Windows, Built in double wardrobe with a High Gloss finish, Radiator

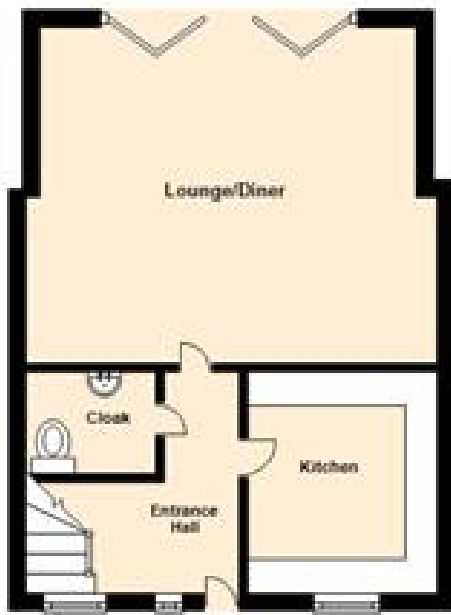
Rear Garden

Composite Decked Area, Porcelain Tiled Patio addition Paved Area, Steps Rising to Rear Garden, Enclosed by Timber Panelled Fence, Two Allocated Parking Bays to Rear

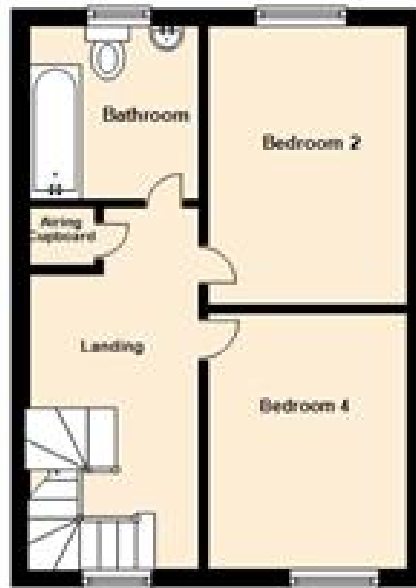
Disclaimer

Whilst we have endeavoured to prepare our sales particulars accurately none of the services, appliances or equipment have been tested. A buyer should satisfy themselves on such matters prior to purchase. Any measurements or distances mentioned in these particulars are for guide reference only. If such particulars are fundamental to a purchase, buyers should rely on their own enquiries. All enquiries should be directed to Elevation Estate Agents in the first instance.

Ground Floor



First Floor



Second Floor



Floor plans are for layout purposes only. Measurements are approximate and subject to inaccuracies.
Plan produced using PlanUp.