

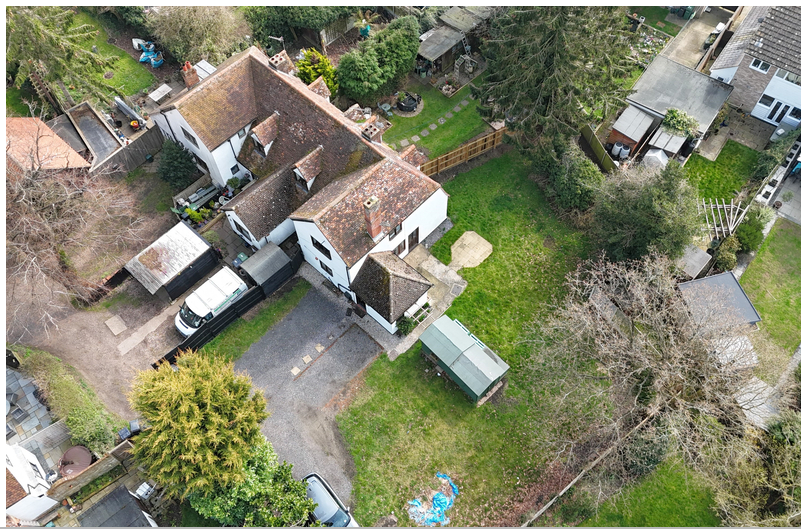


- Three Bedroom End Of Terrace
- Period Features Throughout
- Approaching 0.2 of an acre
- Guide Price £400,000-£425,000
- Potential For Further Development (STTP)
- Two Spacious Reception Rooms
- Family Bathroom
- Parking For Multiple Vehicles
- Situated In The Highly Sought After Village Of Gosfield
- Tucked Away Location

7 Highgates, Church Road, Gosfield, Halstead, Essex. CO9 1TL.

Guide Price £400,000-£425,000

Situated in the sought after village of Gosfield, this charming three-bedroom end-of-terrace house is set on an expansive plot approaching 0.2 acres and offers a blend of period features and modern potential.



Property Details.

Entrance Hall

Kitchen



14' 0" x 5' 4" (4.27m
x 1.63m)

Living Room



14' 8" x 9' 11" (4.47m
x 3.02m)

Dining Room



12' 7" x 8' 5" (3.84m
x 2.57m)

Family Bathroom



First Floor

Property Details.

Bedroom One



14' 0" x 8' 2" (4.27m
x 2.49m)

Bedroom Three



13' 9" x 7' 5" (4.19m
x 2.26m)

Bedroom Two



11' 5" x 10' 3" (3.48m
x 3.12m)

