



# Ground Floor

A-0  
3 Bedroom  
125 sqm

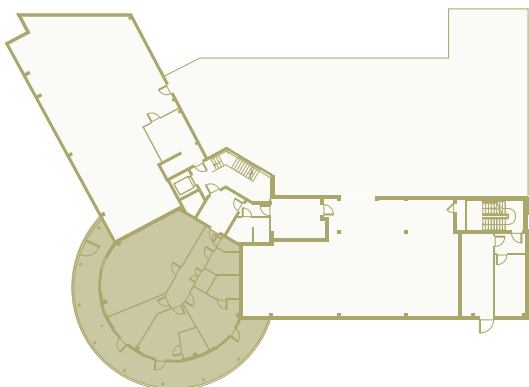
Kitchen  
Living  
Dining  
11.4 x 5.9m<sup>2</sup>

Bedroom 1  
4.5 x 3.9m<sup>2</sup>

Bedroom 2  
4.1 x 5.1m<sup>2</sup>

Bedroom 3  
5.2 x 3.3m<sup>2</sup>

Bathroom  
1.8 x 2.9m<sup>2</sup>



First Floor  
Second Floor

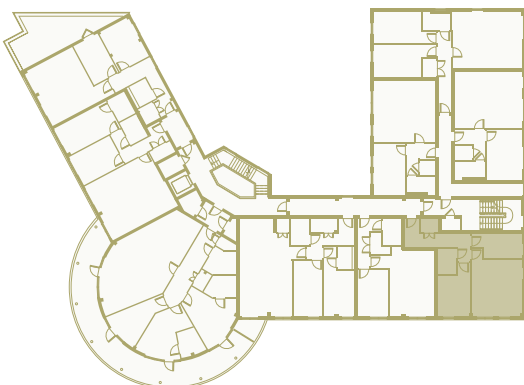
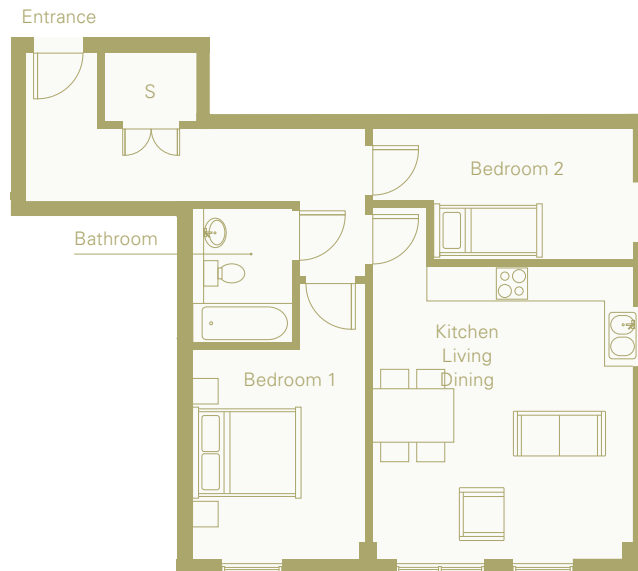
A-1, A-7  
2 Bedroom  
64 sqm

Kitchen  
Living  
Dining  
6.0 x 4.5m<sup>2</sup>

Bedroom 1  
4.6 x 3.2m<sup>2</sup>

Bedroom 2  
4.5 x 2.1m<sup>2</sup>

Bathroom  
2.1 x 1.7m<sup>2</sup>



First and Second Floor

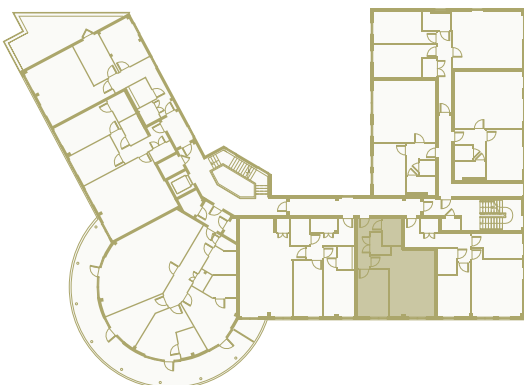
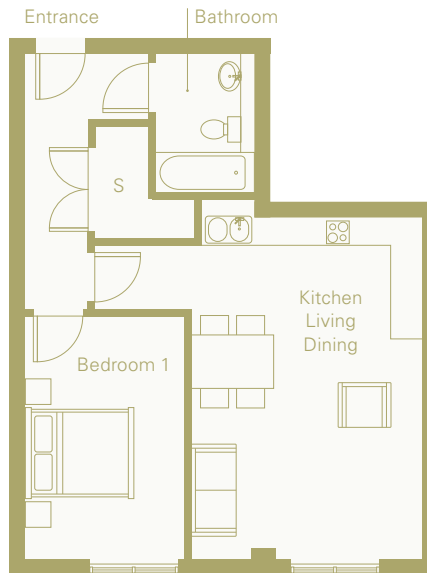
First Floor  
Second Floor

A-2, A-8  
1 Bedroom  
50 sqm

Kitchen  
Living  
Dining  
6.0 x 4.4m<sup>2</sup>

Bedroom 1  
4.1 x 2.7m<sup>2</sup>

Bathroom  
2.1 x 1.7m<sup>2</sup>



First and Second Floor

First Floor  
Second Floor

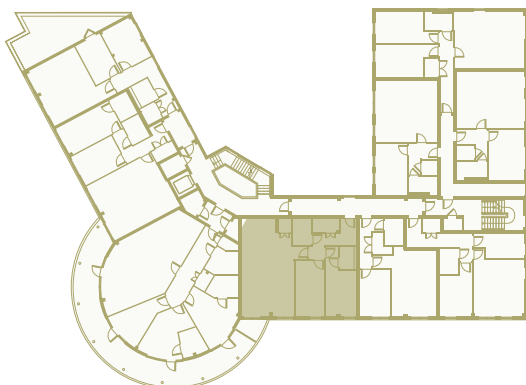
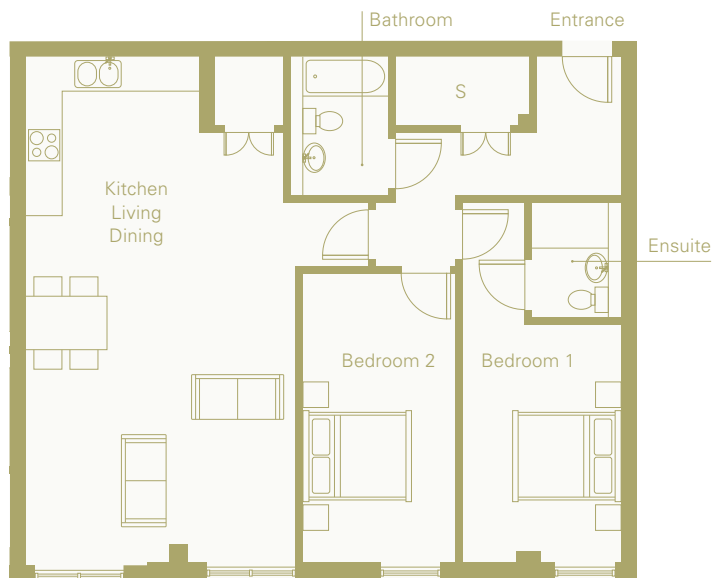
A-3, A-9  
2 Bedroom  
89 sqm

Kitchen  
Living  
Dining  
8.7 x 4.6m<sup>2</sup>

Bedroom 1  
6.2 x 2.7m<sup>2</sup>

Bedroom 2  
4.9 x 2.6m<sup>2</sup>

Bathroom  
2.4 x 1.7m<sup>2</sup>



First and Second Floor

First Floor  
Second Floor

A-4, A-10  
3 Bedroom  
125 sqm

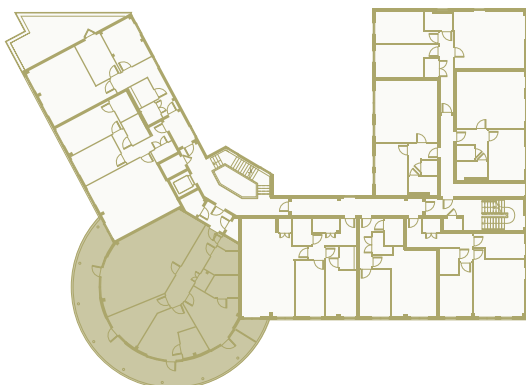
Kitchen  
Living  
Dining  
11.5 x 5.9m<sup>2</sup>

Bedroom 1  
4.5 x 3.9m<sup>2</sup>

Bedroom 2  
5.0 x 4.1m<sup>2</sup>

Bedroom 3  
5.2 x 3.3m<sup>2</sup>

Bathroom  
2.9 x 1.9m<sup>2</sup>



First and Second Floor

First Floor  
Second Floor

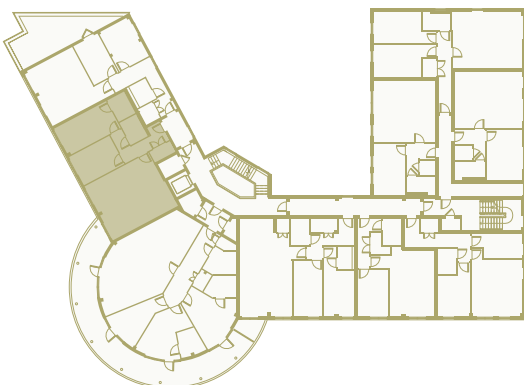
A-5, A-11  
2 Bedroom  
83 sqm

Kitchen  
Living  
Dining  
6.5 x 5.4m<sup>2</sup>

Bedroom 1  
5.1 x 2.9m<sup>2</sup>

Bedroom 2  
3.9 x 2.8m<sup>2</sup>

Bathroom  
2.1 x 1.6m<sup>2</sup>



First and Second Floor

First Floor  
Second Floor

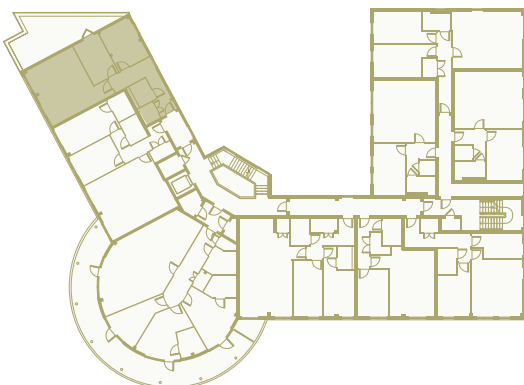
A-6, A-12  
2 Bedroom  
68 sqm

Kitchen  
Living  
Dining  
6.0 x 5.2m<sup>2</sup>

Bedroom 1  
4.0 x 2.9m<sup>2</sup>

Bedroom 2  
4.0 x 2.4m<sup>2</sup>

Bathroom  
2.1 x 1.7m<sup>2</sup>



First and Second Floor



# Third Floor

A-13  
3 Bedroom  
108 sqm

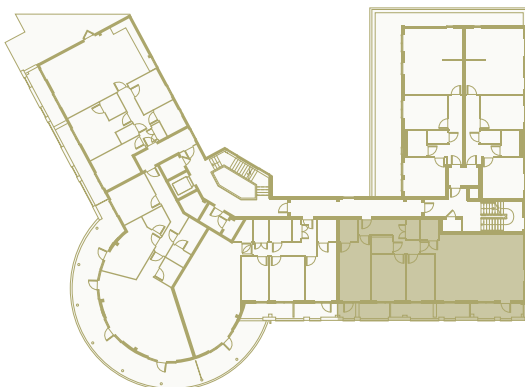
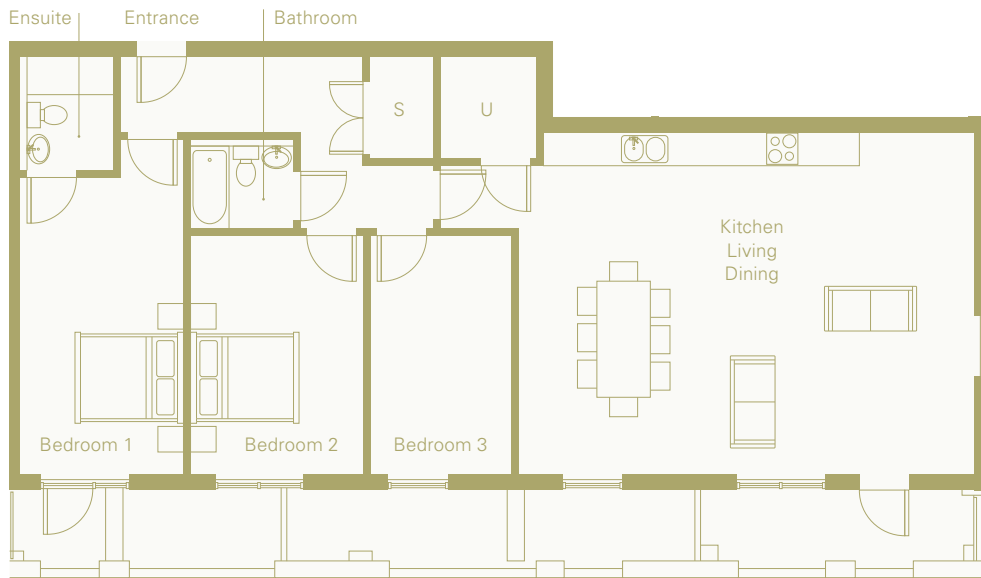
Kitchen  
Living  
Dining  
7.5 x 5.9m<sup>2</sup>

Bedroom 1  
4.9 x 2.8m<sup>2</sup>

Bedroom 2  
3.9 x 3.2m<sup>2</sup>

Bedroom 3  
3.9 x 2.4m<sup>2</sup>

Bathroom  
2.1 x 1.7m<sup>2</sup>



Third Floor

A-14  
3 Bedroom  
106 sqm

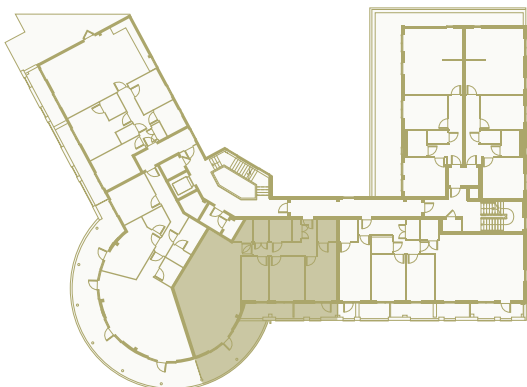
Kitchen  
Living  
Dining  
11.1 x 5.8m<sup>2</sup>

Bedroom 1  
4.9 x 2.7m<sup>2</sup>

Bedroom 2  
3.9 x 2.4m<sup>2</sup>

Bedroom 3  
3.9 x 2.4m<sup>2</sup>

Bathroom  
2.1 x 1.7m<sup>2</sup>



Third Floor

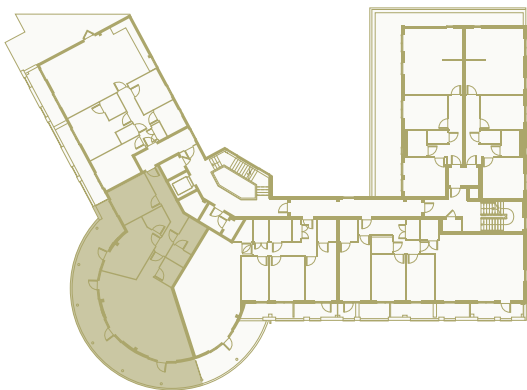
A-15  
2 Bedroom  
100 sqm

Kitchen  
Living  
Dining  
11.1 x 6.3m<sup>2</sup>

Bedroom 1  
5.6 x 3.1m<sup>2</sup>

Bedroom 2  
3.6 x 3.1m<sup>2</sup>

Bathroom  
2.1 x 2.1m<sup>2</sup>



Third Floor

A-16  
3 Bedroom  
103 sqm

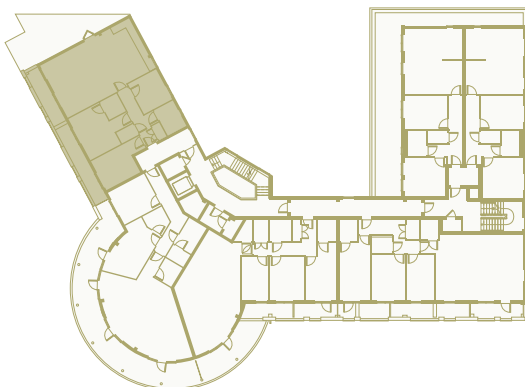
Kitchen  
Living  
Dining  
8.9 x 5.2m<sup>2</sup>

Bedroom 1  
4.8 x 4.2m<sup>2</sup>

Bedroom 2  
4.8 x 2.9m<sup>2</sup>

Bedroom 3  
3.0 x 2.8m<sup>2</sup>

Bathroom  
2.5 x 1.7m<sup>2</sup>



# Fourth Floor

A-17  
3 Bedroom  
152 sqm

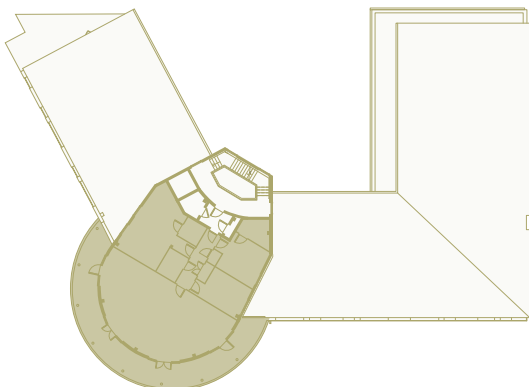
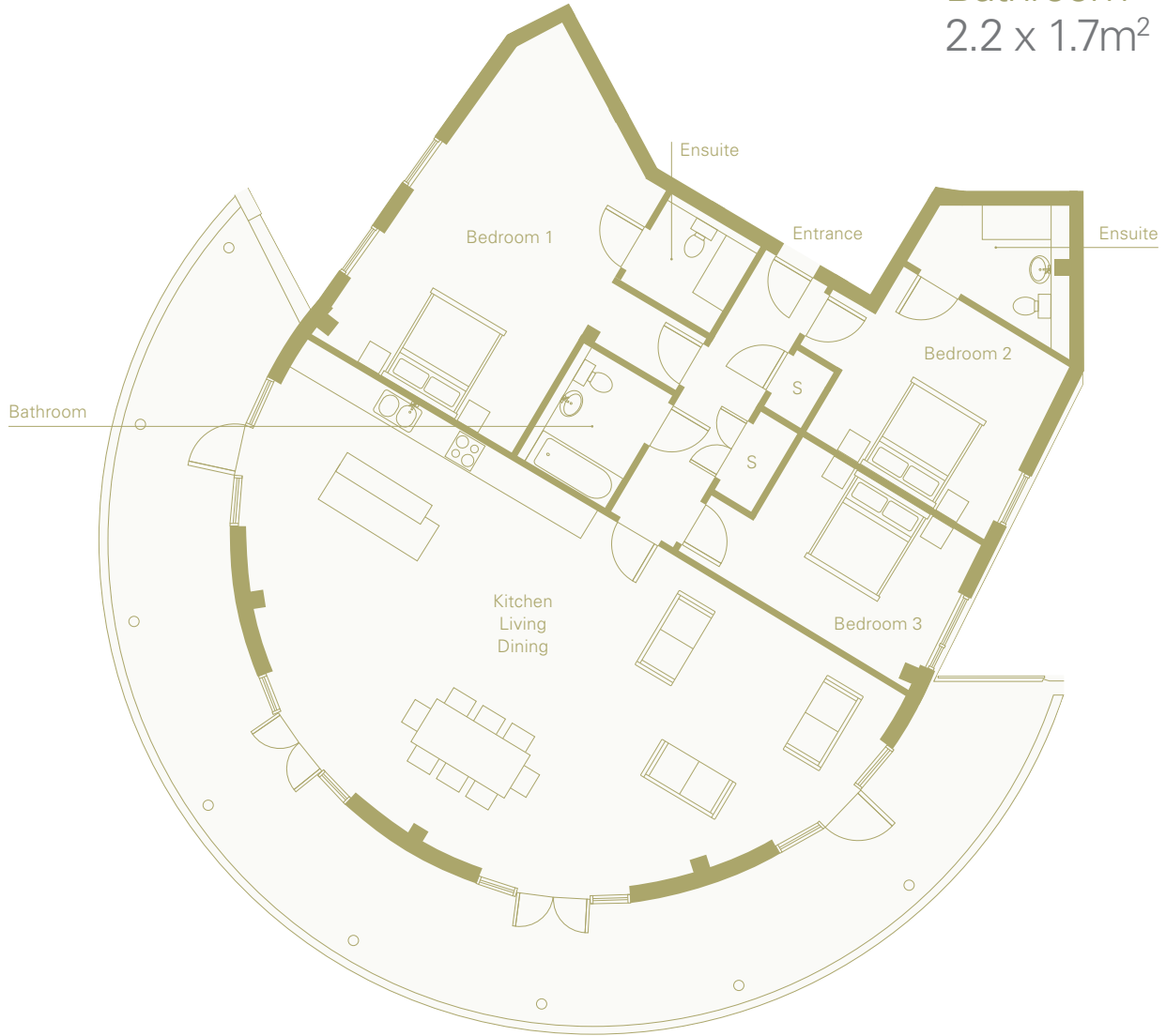
Kitchen  
Living  
Dining  
12.7 x 6.6m<sup>2</sup>

Bedroom 1  
7.2 x 4.1m<sup>2</sup>

Bedroom 2  
3.6 x 3.3m<sup>2</sup>

Bedroom 3  
4.9 x 3.2m<sup>2</sup>

Bathroom  
2.2 x 1.7m<sup>2</sup>



ARC  
Harbour Road  
Portishead  
BS20 7AW

E: [sales@cliftonsandbutlers.co.uk](mailto:sales@cliftonsandbutlers.co.uk)

T: 01275 844 434

W: [arcportishead.co.uk](http://arcportishead.co.uk)

