



Torpoint, Wellington Hill, Loughton, Essex. IG10 4AH

- SOUGHT AFTER LOCATION
- SURROUNDED BY EPPING FOREST
- AIR CONDITIONING TO MASTER BEDROOM
- MODERN FITTED KITCHEN DINER
- LARGE DETACHED GARAGE
- OPPOSITE HIGH BEECH GOLF COURSE
- CHAIN FREE
- CCTV, COLOUR ENTRYPHONE, MONITORED ALARM SYSTEM



PROPERTY DESCRIPTION

Situated in a much sought-after location, opposite High Beech Golf Course, and having undergone a complete refurbishment, we proudly present this exquisite four-bedroom, three-reception detached house. With its tasteful presentation and numerous desirable features, this property offers a truly comfortable and contemporary living experience.

Upon entering the house, you are greeted by a modern fitted kitchen diner, equipped with the latest appliances and ample storage space. The kitchen provides an ideal setting for culinary enthusiasts and serves as a central hub for family gatherings and entertaining guests.

The property boasts a spacious lounge, providing an inviting space for relaxation and socialising. Natural light floods the room, creating a warm and welcoming atmosphere.

The master bedroom is a true highlight, featuring an en-suite shower room and a walk-in wardrobe. This private retreat offers a tranquil space to unwind and provides convenient storage solutions.

In addition to the living areas, this property also includes a large detached garage, providing secure parking and extra storage space.

The property is offered chain-free, allowing for a seamless and hassle-free purchase process.



ROOM DESCRIPTIONS

Entrance

Hallway

11' 9" x 9' 1" (3.58m x 2.77m)

WC

5' 0" x 3' 0" (1.52m x 0.91m)

Breakfast Room

11' 5" x 9' 4" (3.48m x 2.84m)

Kitchen

20' 9" x 9' 4" (6.32m x 2.84m)

Utility Room

5' 9" x 5' 3" (1.75m x 1.60m)

Lounge

13' 9" x 27' 8" at Longest Point (4.19m x 8.43m)

Dining Room

15' 7" x 8' 5" (4.75m x 2.57m)

Stairs to First Floor

Bedroom One

21' 4" x 8' 4" (6.50m x 2.54m)

En-Suite Shower

8' 2" x 3' 3" (2.49m x 0.99m)

Dressing Room

5' 2" x 4' 10" (1.57m x 1.47m)

Bedroom Two

11' 9" x 12' 5" (3.58m x 3.78m)

Bedroom Three

11' 2" x 8' 5" (3.40m x 2.57m)

Bedroom Four

10' 6" x 8' 1" (3.20m x 2.46m)

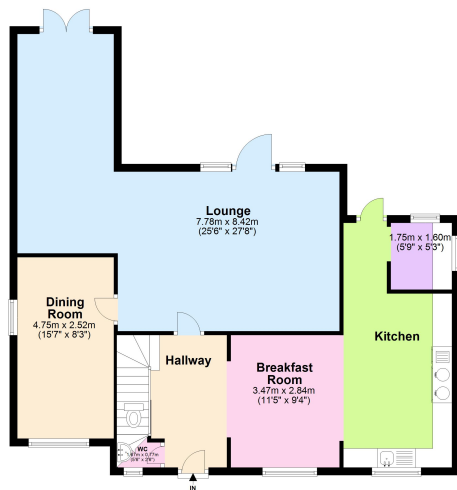
Bathroom



FLOORPLAN



Ground Floor



First Floor

