



Fairy Street  
Hetton-le-Hole  
Houghton le Spring  
Tyne and Wear  
DH5 9EJ

Offers in Excess of £50,000

bettermove



# Fairy Street Houghton le Spring

Bettermove are proud to present this 2 bedroom terraced house in Hetton-le-Hole available with no forward chain.

The property is currently tenanted and it will be sold with tenants in situ for immediate investment. Rental yields can be obtained through Bettermove.

The property benefits from double glazing, gas central heating throughout.

The council tax band is A.

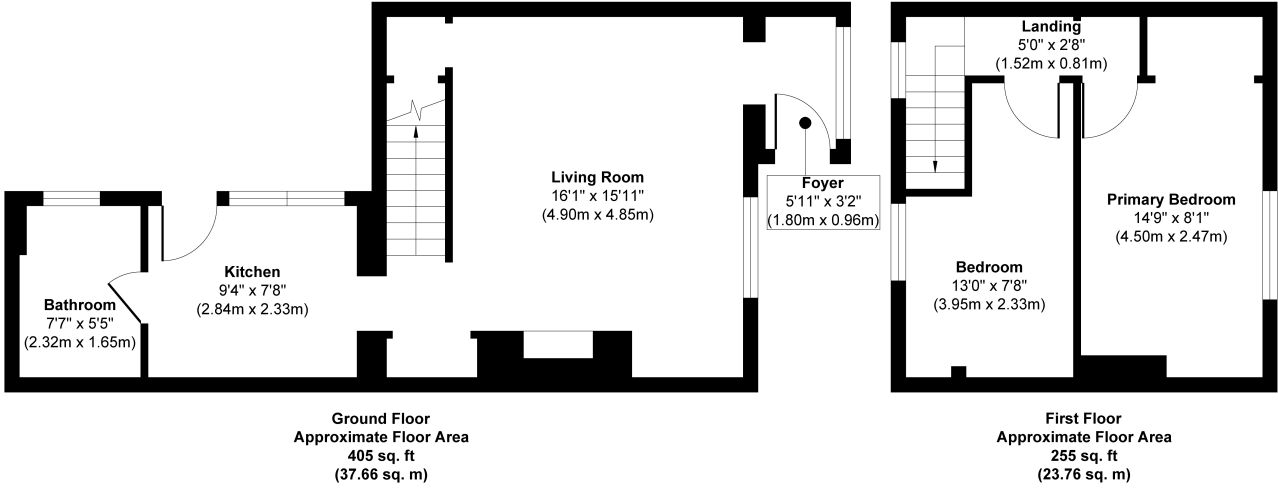
The interior of this beautifully presented property comprises a spacious living room, fitted kitchen and family bathroom on the ground floor. The first floor consists of 2 bedrooms. The exterior boasts a private rear garden, perfect for enjoying the summer months.

Located in the popular town of Hetton-le-Hole, the property is close to a range of amenities, including shops, supermarkets, restaurants and pubs. Excellent transport connections can be found from the A182, A690 and local bus routes.

This exciting opportunity should not be missed! All enquiries can be made through Bettermove on 0330 004 0050.



DH5 9EJ - 27 Fairy Street, Hetton-le-hole



**Approx. Gross Internal Floor Area 660 sq. ft / 61.42 sq. m**

Whilst every attempt has been made to ensure the accuracy of the floor plan contained here, measurements of doors, windows, rooms and any other items are approximate and no responsibility is taken for any error, omission, or mis-statement. The measurements should not be relied upon for valuation, transaction and/or funding purposes. This plan is for illustrative purposes only and should be used as such by any prospective purchaser or tenant.





20-22 Bridge End, Leeds, LS1 4DJ  
t: 0330 004 0050 e: hello@bettermove.co.uk  
[www.bettermove.co.uk](http://www.bettermove.co.uk)