



Hazelhurst Street,
Hanley

 **OneAgency**

01782 970222

hello@oneagencygroup.co.uk



£75,000

Mid terrace house which is considered an excellent buy to let opportunity, conveniently located for Hanley City Centre, Stoke Railway Station and Staffordshire University. The property requires some updating and is offered with no chain involvement.





Ground Floor

Reception Room One

4.33m x 3.43m (14' 2" x 11' 3") A double glazed bay window to the front, radiator and carpet flooring.

Reception Room Two

3.87m x 3.43m (12' 8" x 11' 3") A double glazed window to the rear, radiator and laminate flooring.

Kitchen

3.40m x 2.10m (11' 2" x 6' 11") A range of base units with worktops, stainless steel sink basin, oven with gas hob and extractor hood over, double glazed window, space for a fridge and freezer, plumbing for a washing machine, lobby with storage cupboard and tiled flooring.

Bathroom

2.29m x 1.95m (7' 6" x 6' 5") A white suite with a bath and shower overhead, hand wash basin, low level W/C, radiator, double glazed window and vinyl flooring.

First Floor

Bedroom One

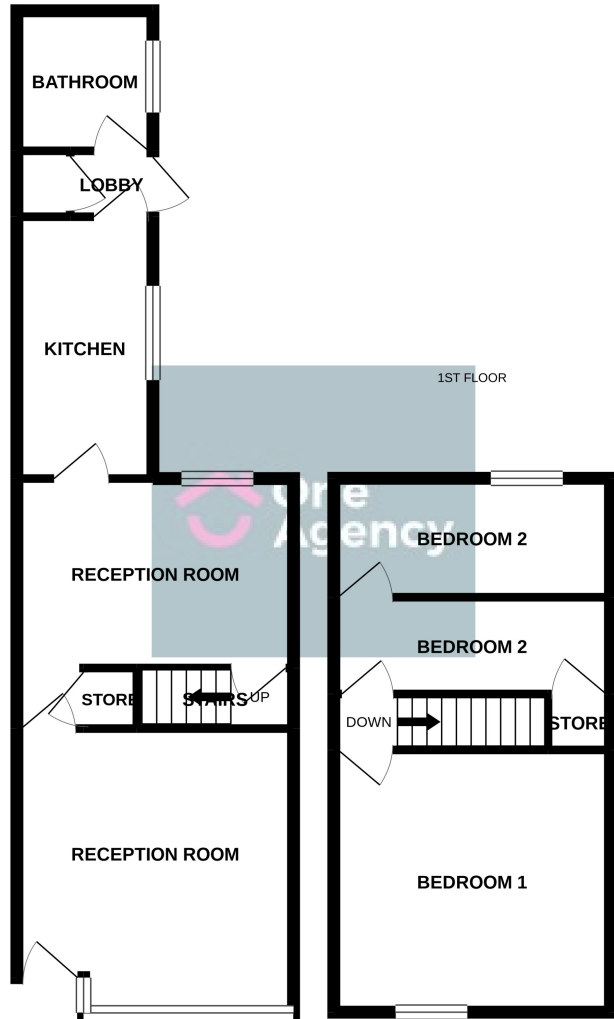
3.65m x 3.44m (12' 0" x 11' 3") A double glazed window to the front, radiator and laminate flooring.

Bedroom Two

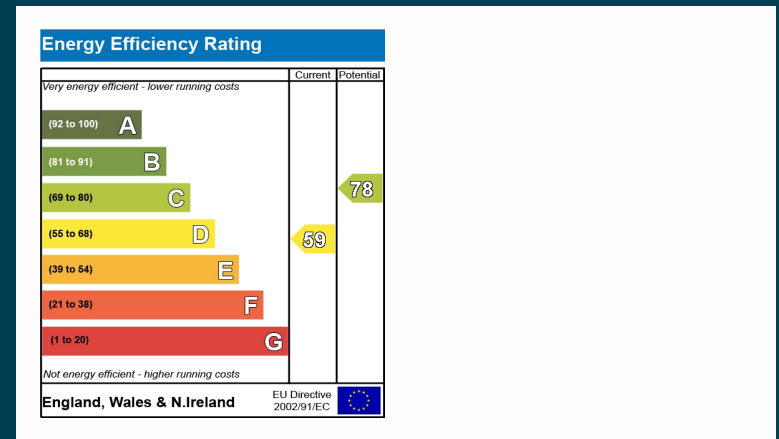
3.95m x 3.44m (13' 0" x 11' 3") A bedroom that has been split down the middle, double glazed window to the rear and radiator. *Size is based on the room as one*

External

A yard to the rear which is paved.



Whilst every attempt has been made to ensure the accuracy of the floorplan contained here, measurements of doors, windows, rooms and any other items are approximate and no responsibility is taken for any error, omission or mis-statement. This plan is for illustrative purposes only and should be used as such by any prospective purchaser. The services, systems and appliances shown have not been tested and no guarantee as to their operability or efficiency can be given.
Made with Metropix ©2021



OneAgency, 9 & 10 Ridge House Drive, Festival Park, Stoke-on-Trent, ST1 5SJ

01782 970222

hello@oneagencygroup.co.uk

Every attempt has been made to ensure accuracy, however, all measurements are approximate and for illustrative purposes only. **Not to scale.**

In accordance with The Consumer Protection from Unfair Trading Regulations 2008 the following particulars have been prepared in good faith and they are not intended to constitute part of an offer or contract. We have not carried out a structural survey and the services, appliances and specific fittings have not been tested. All photographs, measurements, floor plans and distances referred to are given as a guide only and should not be relied upon for the purchase of carpets or any other fixtures and fittings. Lease details, service charges and ground rent (where applicable) are given as a guide only and should be checked and confirmed by your Solicitor prior to exchange of contracts.