

Flat 50 The Birches, Englefield Place, Earley,
Reading, Berkshire. RG6 1FR.



3 Maiden Lane Centre
Berkshire
Reading RG6 3HD
Tel: 0118 926 8260
www.arins.co.uk



Flat 50 The Birches, Englefield Place, Earley,
Reading, Berkshire. RG6 1FR.

£180,000 Leasehold

Welcome to The Birches. This stylish new development in the popular area of Wokingham, offers a range of beautifully designed one and two bedroom apartments for rent and sale under shared ownership to people over 55. Giving you the freedom to live independently in your own stylish self-contained apartment, with the peace of mind that 24 hour care and support is always there when you need it, The Birches is the ideal place for older people looking for both comfort and independence.

- Modern one bedroom apartment
- Communal gardens
- Close to all amenities
- Good communal facilities on site
- Electric heating
- Double glazing
- Lift access to all floors
- In house laundry facilities
- 75% Shared Ownership
- No Chain

These particulars, whilst believed to be accurate are set out as a general outline only for guidance and do not constitute any part of an offer or contract. Intending purchasers should not rely on them as statements or representation of fact, but must satisfy themselves by inspection or otherwise as to their accuracy. We have not carried out a detailed survey nor tested the services, appliances and specific fittings. Room sizes should not be relied upon for carpets and furnishings. The measurements given are approximate. No person in this firm's employment has the authority to make or give any representation or warranty in respect of the property.

Please
recycle
me

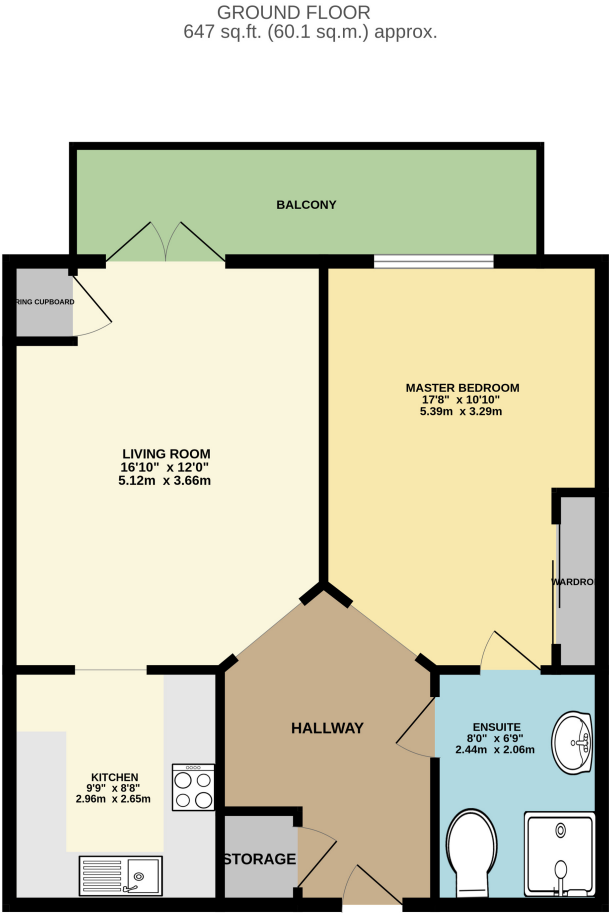


Covering Reading, Earley, Lower Earley, Tilehurst, Woodley, Shinfield, Caversham and all other surrounding areas

Flat 50 The Birches, Englefield Place, Earley,
Reading, Berkshire. RG6 1FR.



Have you visited our website for our latest property listings?
www.arins.co.uk



TOTAL FLOOR AREA: 647 sq.ft. (60.1 sq.m.) approx.
Whilst every attempt has been made to ensure the accuracy of the floorplan contained here, measurements of doors, windows, rooms and any other items are approximate and no responsibility is taken for any error, omission or mis-statement. This plan is for illustrative purposes only and should be used as such by any prospective purchaser. The services, systems and appliances shown have not been tested and no guarantee as to their operability or efficiency can be given.
Made with Metronomy software

Property Description

SECOND FLOOR APARTMENT

Internal communal areas

Lounge, kitchenette, dining room, hairdressers

Hall

Living room

3.66m x 5.12m (12' 0" x 16' 10")

Kitchen

2.65m x 2.96m (8' 8" x 9' 9")

Bedroom

3.29m x 5.39m (10' 10" x 17' 8")

Shower room

2.06m x 2.44m (6' 9" x 8' 0")

OUTSIDE

Balcony

Communal gardens and parking

Council Tax Band

B

