





An immaculately presented, detached family home, located at the end of a quiet cul-de-sac with open countryside views to the rear.

- Immaculately Presented
- Open Countryside Views to the Rear
- Luxury Kitchen & Bathrooms
- Two Reception Rooms
- Three Bedrooms
- Mature Gardens
- Detached Garage & Long Driveway

Description

An immaculately presented, detached family home, located at the bottom of a quiet cul-de-sac and with lovely, southerly, countryside views to the rear. The property has been exceptionally well maintained by the current owners, who have replaced the two bathrooms and cloakroom with luxury fittings and the whole home is decorated to a high standard. With gas central heating and PVCu double glazing, comprises: Entrance hall, cloakroom/WC, lounge, dining room, large fully equipped kitchen, first floor landing, three good size bedrooms, en-suite shower room and family bathroom. Outside there are mature front and rear gardens along with a long driveway, which leads to a detached garage.



Location

Davenham is a small village located due south of Northwich and unlike many surrounding Cheshire villages it still retains an excellent range of local amenities making it almost self sufficient. These include a Spar supermarket and filling station, a pharmacy, hairdressers and barbers, a florist and fish and chip shop along with two really popular pubs, The Oddfellows Arms and The Bulls Head, the later with a great reputation for good, home made, local food. There is a village primary school which always excels with its Ofsted ratings and the well regarded Country High School Leftwich is close by. The A556 and A49 easily facilitate access to the region's major road network with Manchester and Liverpool airports both within 20 miles. Nearby Northwich caters for a more comprehensive range of amenities, including leading supermarkets with Waitrose, Sainsbury's and Tesco all represented.

Tenure

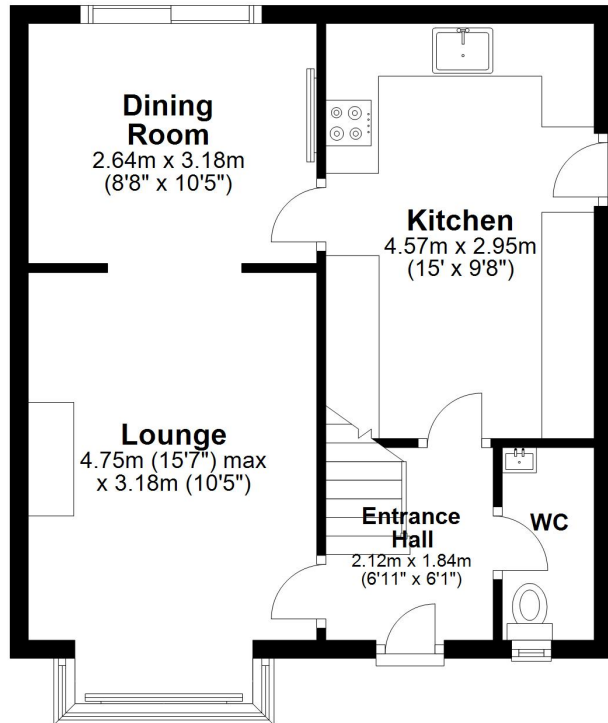
FREEHOLD

EPC Rating: C



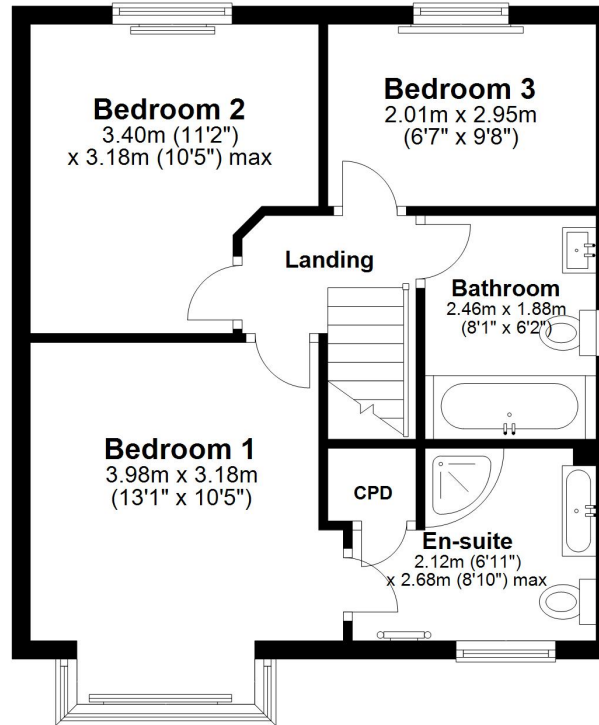
Ground Floor

Approx. 43.6 sq. metres (469.7 sq. feet)



First Floor

Approx. 43.6 sq. metres (469.7 sq. feet)



Total area: approx. 87.3 sq. metres (939.5 sq. feet)