



**GREGORY BROWN**  
RESIDENTIAL SALES & LETTINGS

£140,000 Leasehold  
**FOR SALE**



## **17 Matthews Lodge, Station Road, Addlestone, Surrey, KT15 2FB**

RARELY AVAILABLE ONE BEDROOM RETIREMENT APARTMENT WITHIN SOUGHT AFTER DEVELOPMENT. Close to plenty of shops and amenities in both Addlestone & Weybridge High Streets. Nearby bus and rail links connect directly with London Waterloo and other local Towns. Residents share a welcoming lounge, laundry room and beautiful gardens. No Onward Chain. Viewings Highly Recommended!

**Gregory Brown**

127a, High Street, Staines-upon-Thames, TW18 4PD

01784 451458

[staines@gregory-brown.co.uk](mailto:staines@gregory-brown.co.uk)

## ROOM DESCRIPTIONS

---

### **Communal Entrance**

With security-entry door, lift & stairs to first floor.

### **Entrance Hall**

Light and power points, built-in storage cupboard, cupboard housing hot water tank, doors to:

### **Lounge/Diner**

Rear aspect UPVC double glazed window, light and power points, telephone point, TV point, electric heater and fireplace.



### **Kitchen**

Rear aspect UPVC double glazed window, range of modern fitted units at eye and base level, roll edged worktops, sink drainer unit, built-in oven and hob with extractor over, integrated low level freezer, space for freestanding fridge/freezer.



### **Bedroom 1**

Rear aspect UPVC double glazed window, light and power points, electric heater, built-in wardrobes, TV point, telephone point.



## ROOM DESCRIPTIONS

---

### **Bathroom**

Side aspect UPVC double glazed window, panel enclosed bath with shower over, low level W.C, wash hand basin inset to cabinet, partly tiled walls, wall mounted heater.



### **Residents Lounge & Laundry Room**

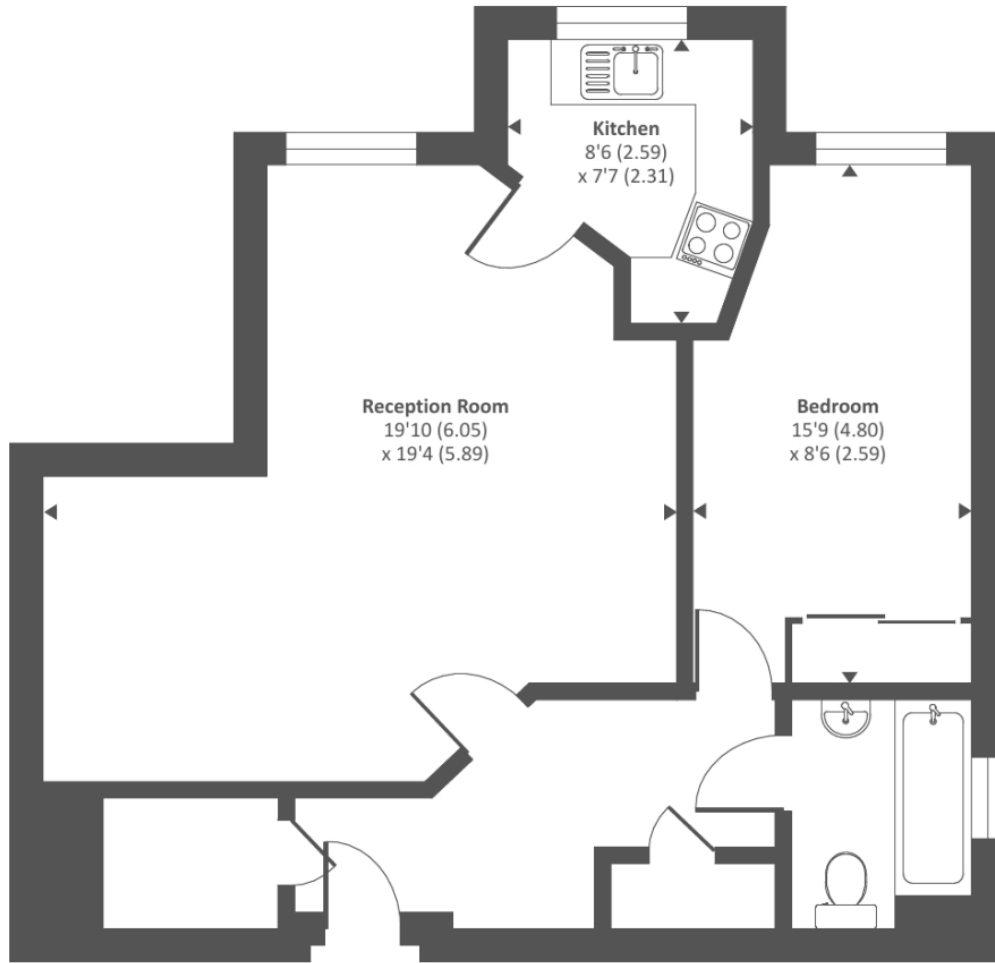
#### **Residents Lounge**



#### **Well-Maintained Gardens**



# FLOORPLAN



First floor