







Thorntons
The right way to move
Driftwood Cottage

Thorntons
The right way to move

Driftwood Cottage 4 Narrow Wynd

Saint Monans, Fife
KY10 2BD

 2	 4
 2	 C



Situated next to the working harbour in St Monans in the East Neuk of Fife, this semi-detached, light-filled cottage offers accommodation arranged over three levels, including four bedrooms, a large sitting room, an open-plan kitchen, living, and dining room, and two bathrooms (plus a separate WC). Externally, the cottage is accompanied by a delightful garden and private parking.

The front door opens into a welcoming reception hall with storage and a WC. On your right, you step through double doors into the sitting room, where dual-aspect windows capture natural light and a flexible floorspace allows for a choice of furniture layouts, all arranged around a feature fireplace surround. The room is elegantly presented with neutral décor and a fitted carpet. Downstairs, you will find what is sure to be the sociable heart of the home – the open-plan kitchen, living, and dining room. The room offers plenty of space for dining and lounge furniture, with a full wall of fitted shelving for books and display items.

Features

- Semi-detached cottage in Saint Monans
- Well-presented, neutral interiors
- Reception hall with storage and WC
- Formal, dual-aspect sitting room
- Fabulous open-plan kitchen, living and dining room
- Three double bedrooms (one with a built-in wardrobe)
- Fourth bedroom/study
- One en-suite shower room
- Separate stylish shower room with rainfall shower
- Delightful private garden
- Private parking space
- Gas central heating and mostly secondary glazing



"Driftwood Cottage is a characterful home in St Monans, lying just a stone's throw from the harbour."





The country-style kitchen is well-equipped with attractive cabinetry, a ceramic sink, and wood worktops, including a central island. Integrated appliances comprise an oven, hob, dishwasher, and washing machine, whilst provision is made for a fridge/freezer and the space is supplemented by a large store cupboard. The home's four bedrooms are arranged over the ground and first floors. The bedrooms are all neutrally decorated and comfortably carpeted, and the principal bedroom boasts a built-in wardrobe and an en-suite shower room. The fourth bedroom is currently being used as a study and has a full wall of fitted bookshelves. A stylish shower room, with a deluxe walk-in enclosure with a rainfall showerhead, completes the accommodation on offer. The home is kept warm by gas central heating and has secondary glazing (except the kitchen which has wooden shutters).

Externally, the cottage is accompanied by a delightful private garden featuring paved seating areas, a partially walled border, and a wealth of colourful, mature planting and shrubbery. The home also has a private parking space.

Extras: All fitted floor coverings, window coverings, light fittings, and integrated kitchen appliances will be included in the sale. Some furniture may also be available.



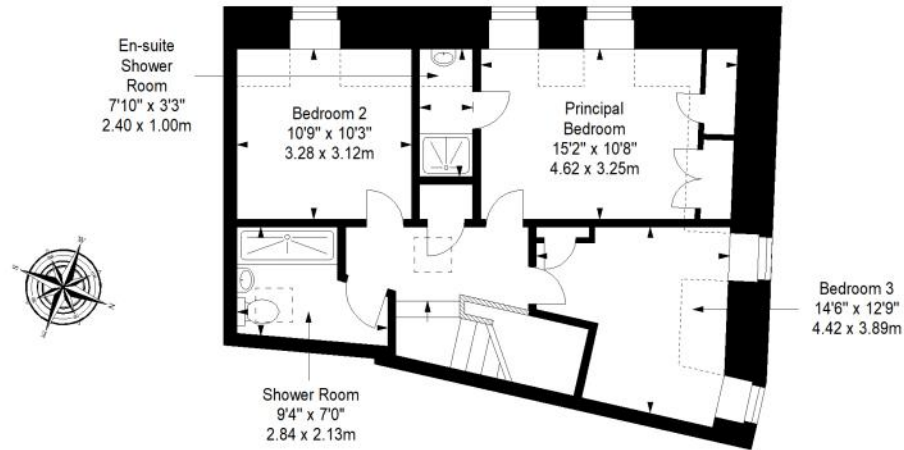


St Monans, Fife

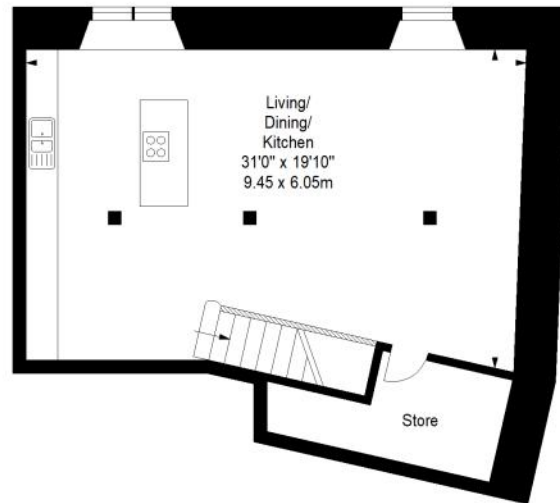
Situated between Elie and Pittenweem in the East Neuk of Fife, lies St Monans, a friendly and traditional seaside village. It is one of the chain of attractive fishing villages that line the North shore of the Firth of Forth, with views to North Berwick, the Bass Rock, and the Isle of May. The area is renowned for its coastal walks and quiet award-winning beaches, and the beautiful coastline provides an ideal setting for a variety of outdoor activities and water sports. St Monans itself offers good local amenities including a Post Office, minimarkets, hairdressers, award-winning seafood restaurant, and an abundance of fish merchants. The family run Ardross Farm Shop nearby is a haven for food lovers, selling fresh local produce, and the popular village of Anstruther, with its famous fish and chip shop, is only 3 miles away. More extensive shopping can be found a short drive away at Glenrothes or Kirkcaldy. The village benefits from a local nursery and primary school, with secondary schooling available at nearby Waid academy in Anstruther. For the golf enthusiast, there are a number of courses in the surrounding area and the famous course at St Andrews is only a 20-minute drive away. Lovely walks can be found at the historic Kellie Castle at Pittenweem which is surrounded by stunning Victorian gardens. Pittenweem also has an Arts festival taking place every August, showcasing hundreds of artists and attracting thousands of visitors from all over the country.

Floorplan

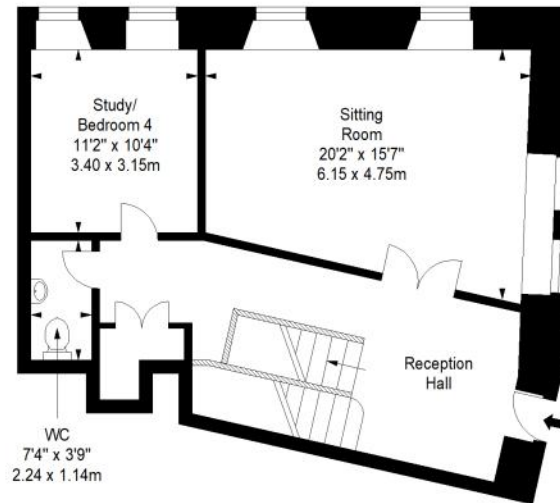
First Floor
Approx. 52.1 sq. metres (560.8 sq. feet)



Basement
Approx. 57.9 sq. metres (623.3 sq. feet)



Ground Floor
Approx. 60.7 sq. metres (653.4 sq. feet)



Total area: approx. 170.7 sq. metres (1837.5 sq. feet)



Thorntons

The right way to move

Our Branches

ANSTRUTHER

5A Shore Street, Anstruther, KY10 3EA
01333 310481
anstrutheaa@thorntons-law.co.uk

BONNYRIGG

3-7 High Street, Bonnyrigg, EH19 2DA
0131 663 7135
bonnyriggea@thorntons-law.co.uk

DUNDEE

Whitehall House, 33 Yeaman Shore
Dundee DD1 4BJ
01382 200099
dundeeea@thorntons-law.co.uk

FORFAR

53 East High Street, Forfar, DD8 2EL
01307 466886
forfarea@thorntons-law.co.uk

PERTH

7 Whitefriars Crescent, Perth, PH2 0PA
01738 443456
perthea@thorntons-law.co.uk

ARBROATH

165 High Street, Arbroath, DD1 1DR
01241 876633
arbroathea@thorntons-law.co.uk

CUPAR

49 Bonnygate, Cupar, KY15 4BY
01334 656564
cupareaa@thorntons-law.co.uk

EDINBURGH

Citypoint, 3rd Floor, 65 Haymarket
Terrace, Edinburgh, EH12 5HD
0131 297 5980
edinea@thorntons-law.co.uk

MONTROSE

55 High Street, Montrose, DD10 8LR
01674 673444
montroseaa@thorntons-law.co.uk

ST ANDREWS

17-21 Bell Street, St Andrews, KY16 9UR
01334 474200
standrewsea@thorntons-law.co.uk



@ThorntonsPropertyServices



@thorntonsproperty



@ThorntonsPS

Thorntons is a trading name of Thorntons Law LLP
Regulated by The Law Society of Scotland