

Leg of Mutton Road

Glastonbury, BA6 8HH

COOPER
AND
TANNER



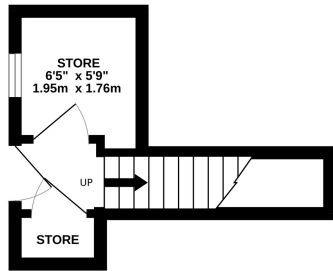
£140,000 Leasehold

🛏 1 🛋 1 🚿 1 EPC D

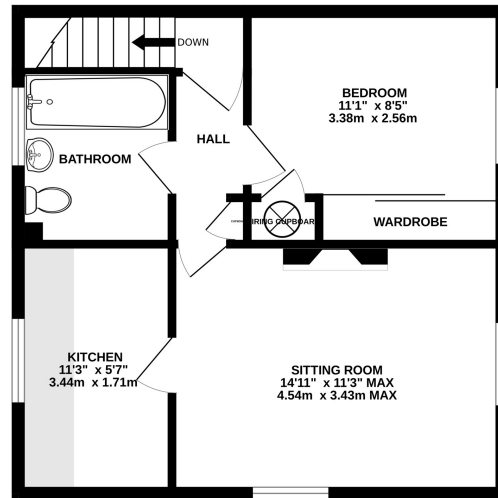
Description

This purpose built first floor flat enjoys an elevated position with outside space, and offers plenty of scope for improvement. An independent ground floor entrance opens to a hallway with access to a cupboard, a large store, and stairs leading to the main accommodation, situated on the first floor. A central hallway provides access to storage, a good-sized double bedroom with built in wardrobes and an airing cupboard, a bathroom, and a dual aspect sitting room with an elevated outlook. Off here is the kitchen, fitted with a range of base and wall units, with space for white goods. There are two flats within the block, with gardens to the front and rear of the building.

GROUND FLOOR



FIRST FLOOR



Whilst every attempt has been made to ensure the accuracy of the floorplan contained here, measurements of doors, windows, rooms and any other items are approximate and no responsibility is taken for any error, omission or mis-statement. This plan is for illustrative purposes only and should be used as such by any prospective purchaser. The services, systems and appliances shown have not been tested and no guarantee as to their operability or efficiency can be given.
Made with Metropix ©2024



Features

- Purpose built first floor flat
- Popular, elevated position
- Scope for improvement/modernisation
- Dual aspect sitting room
- Double bedroom with built-in wardrobe
- Ample storage throughout, including external store
- Ground rent £10 per annum with variable service charges
- Lease length: 125 years from 28/6/1993 (93 years remaining)
- Leasehold - Council Tax Band A

Local Information

- Council Tax Band A
- Tenure Leasehold
- EPC Rating D

GLASTONBURY OFFICE

Telephone 01458 831077

41, High Street, Glastonbury, Somerset BA6 9DS

glastonbury@cooperandtanner.co.uk

**COOPER
AND
TANNER**

Important Notice: These particulars are set out as a general outline only for the guidance of intended purchasers and do not constitute, nor constitute part of, an offer or contract. All descriptions, dimensions, reference to condition and necessary permissions for use and occupation, warranties and other details are given without responsibility and any intending purchasers should not rely on the m as statements or representations of fact but must satisfy themselves by inspection or otherwise as to the correctness of each of them.

