

# FOR SALE

---

Hammersmith Grove,  
Hammersmith, W6

---

Flat  
Brackenbury Village

---

£750,000 lh

---

2  1  1 



**horton  
andgarton**

SALES / LETTINGS / PROPERTY MANAGEMENT

hortonandgarton.co.uk | Sales 020 8819 0510 | Lettings 020 8819 0511  
172 King Street, Hammersmith, W6 0QU



# FOR SALE

---

Hammersmith Grove,  
Hammersmith, W6

---

Flat  
Brackenbury Village

---

£750,000 lh

---

2  1  1 



**horton  
andgarton**

SALES / LETTINGS / PROPERTY MANAGEMENT

hortonandgarton.co.uk | Sales 020 8819 0510 | Lettings 020 8819 0511  
172 King Street, Hammersmith, W6 0QU



# FOR SALE

Hammersmith Grove,  
Hammersmith, W6

Flat  
Brackenbury Village

£750,000 lh

2  1  1 

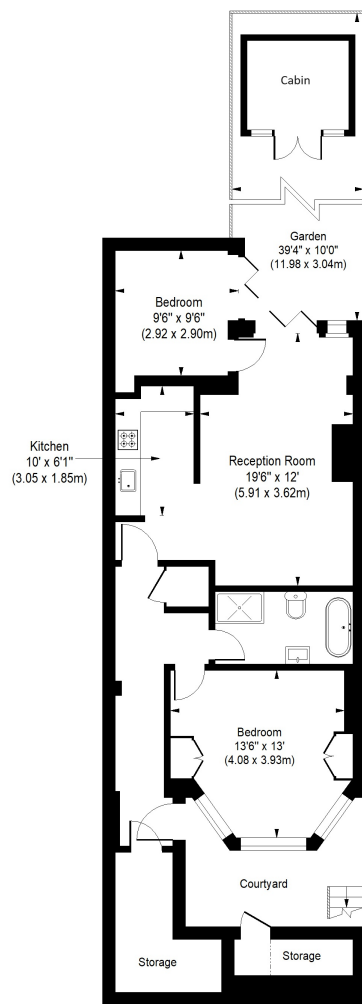


**horton  
andgarton**

SALES / LETTINGS / PROPERTY MANAGEMENT

hortonandgarton.co.uk | Sales 020 8819 0510 | Lettings 020 8819 0511  
172 King Street, Hammersmith, W6 0QU





LOWER GROUND FLOOR



**HAMMERSMITH GROVE, W6**

APPROXIMATE GROSS INTERNAL AREA  
**EXCLUDING EXTERNAL STORAGE 822 Sq' / 76.36 SqM**  
 EXTERNAL STORAGE  
**26 Sq' / 2.42 SqM**

Not to scale, for guidance only and must not be relied upon as a statement of fact.  
 All measurements and areas are approximate only



Victorian garden flat | Two bedrooms - One bathroom |  
 822 Sq' - 76.36 SqM | 39'4 West facing garden | EPC  
 rating C | Brackenbury Village



hortonandgarton.co.uk  
 Sales 020 8819 0510  
 Lettings 020 8819 0511

172 King Street, Hammersmith, W6 0QU