



Oughton Head Way

Hitchin,
Hertfordshire, SG5 2LA
Guide Price £600,000

country
properties

Positioned in one of Hitchin's most desirable residential streets just a short walk from Hitchin's historic town centre, this semi detached two bedroom character home combines period charm with practical, modern living. Set back from the road with views across Oughton Head Green, the home boasts a peaceful yet convenient setting. The current owner has greatly improved and modernised the property throughout.

The ground floor of the property comprises an entrance hall, dining room opening onto a separate living room with character features including bay window and log burner. The kitchen offers space for a range cooker and leads into a separate utility space with a WC.

The first floor offers a large primary bedroom with dual sash windows, second double bedroom and a spacious four piece family bathroom including WC, wash hand basin, bath and shower cubicle.

Outside, the generous, enclosed and private rear garden is mainly laid to lawn with decked area and side access.

Hitchin is a charming medieval market town and has many fine Tudor and Georgian buildings, particularly around the market square. Near to the market square stands the large medieval parish church of St Mary. The town provides good shopping as well as a swimming pool, football team, two theatres, a wide variety of restaurants and pubs and highly regarded girls and boys schools. There is also a mainline railway station providing direct access to Kings Cross and Cambridge.

- Semi detached character cottage
- Two double bedrooms
- Kitchen with separate utility room
- Desirable West Hitchin location
- Private, enclosed rear garden
- 8 mins walk, 0.3 miles to Hitchin Town Centre (as per Google Maps)
- 26 mins walk, 1.2 miles to Hitchin train station (as per Google Maps)







Approximate Gross Internal Area
Ground Floor = 44.5 sq m / 479 sq ft
First Floor = 37.8 sq m / 407 sq ft
Total = 82.3 sq m / 886 sq ft

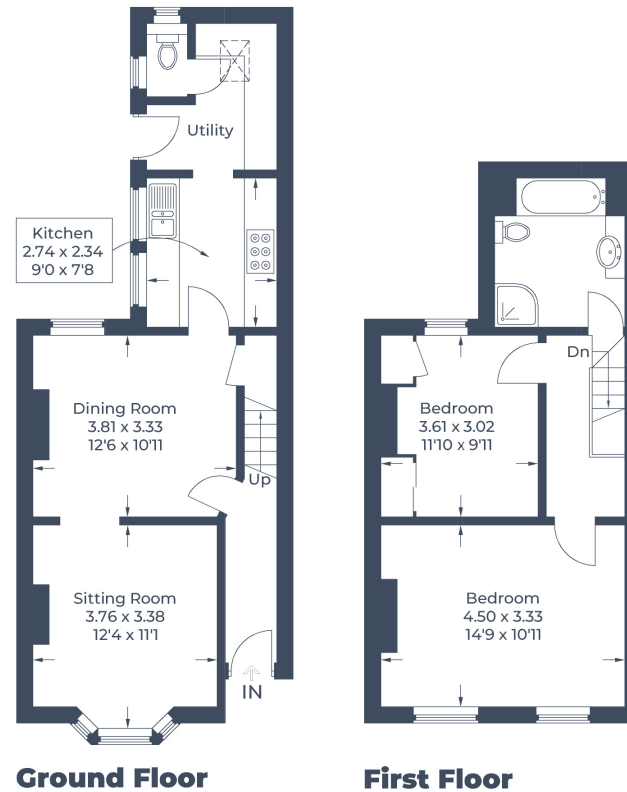


Illustration for identification purposes only,
measurements are approximate, not to scale.
© CJ Property Marketing Produced for Country Properties

All measurements are approximate and quoted in metric with imperial equivalents and for general guidance only and whilst every attempt has been made to ensure accuracy, they must not be relied on. The fixtures, fittings and appliances referred to have not been tested and therefore no guarantee can be given and that they are in working order. Internal photographs are reproduced for general information and it must not be inferred that any item shown is included with the property. For a free valuation, contact the numbers listed on the brochure

Viewing by appointment only

Country Properties | 6, Brand Street | SG5 1HX
T: 01462 452951 | E: hitchin@country-properties.co.uk
www.country-properties.co.uk

country
properties

country
properties