



**DP** DERBYSHIRE  
PROPERTIES  
— SALES & LETTINGS —

**DP** DERBYSHIRE





**19 St Michaels Close, Crich, Matlock, Derbyshire DE4 5DN**  
**£270,000 - Freehold**





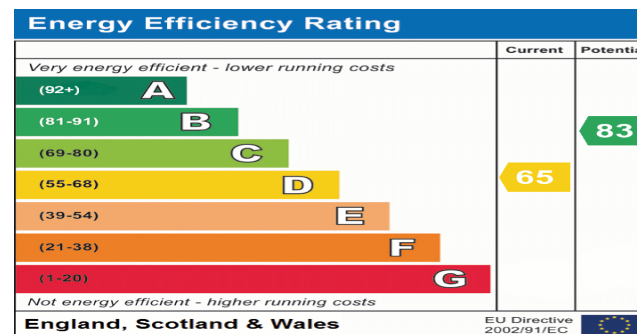
## PROPERTY DESCRIPTION

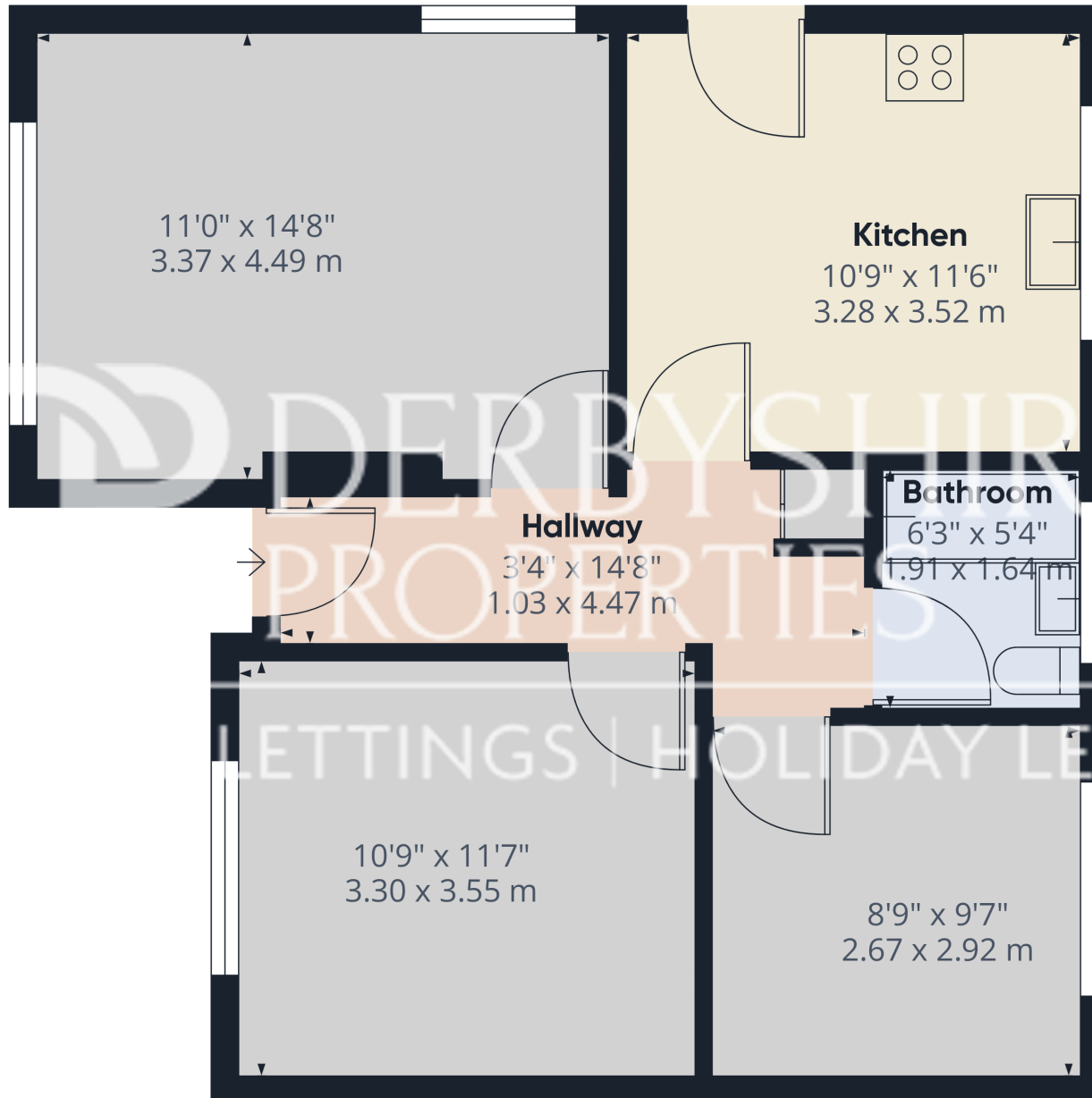
Derbyshire Properties are pleased to present this charming two-bedroom semi-detached bungalow situated in a quiet cul-de-sac within a sought-after residential area on the outskirts of Crich. The property features two bedrooms, a bathroom, a spacious living/dining room, and a breakfast kitchen. Additionally, it boasts gardens to the front and rear, driveway parking, and a detached garage for convenience.

Noteworthy features of this property include double glazing, central heating, and a recently fitted kitchen and bathroom, adding to its overall appeal and value.

## POINTS OF INTEREST

- Semi Detached Bungalow
- 2 Double Bedrooms & 1 Reception Room
- Modern Kitchen/Diner
- Large Driveway & Detached Garage
- Sought After Location
- Quiet Cul De Sac Position
- No Chain
- Ideal Downsize
- Viewing Advised
- COUNCIL TAX BAND C





**Approximate total area<sup>(1)</sup>**

595.67 ft<sup>2</sup>  
55.34 m<sup>2</sup>

(1) Excluding balconies and terraces

While every attempt has been made to ensure accuracy, all measurements are approximate, not to scale. This floor plan is for illustrative purposes only.

Calculations are based on RICS IPMS 3C standard.

**GIRAFFE360**