



£635,000 Share of Freehold
2 bedroom flat

London Road
Forest Hill

Read all about it...

This beautifully presented ground floor flat in Princes Garth, a charming period mansion building in the heart of Forest Hill, seamlessly blends historic character with modern comfort.

Stepping inside, the home retains its original charm, featuring sash windows and ornate fireplaces. A spacious hallway leads to a bright and airy lounge, bathed in natural light from south-facing sash windows. The modern kitchen offers direct access to the private patio and garden ideal for alfresco dining. Also off the hallway is a stylish bathroom and two spacious double bedrooms, with the second bedroom offering access to a versatile additional room—ideal as a study, nursery, or dressing area. The property also benefits from off-street parking.

Ideally located, Forest Hill Station is just a short walk away, offering fast connections to Central London via the Overground and National Rail. The area boasts an eclectic mix of independent shops, supermarkets, and dining spots, while the renowned Horniman Museum and Gardens—along with its vibrant Sunday market—offers the perfect weekend escape.

A perfect home for those seeking period charm, convenience, and a vibrant lifestyle.

Tenure: Share of Freehold (remaining lease term - 956 years) | **Monthly Service Charge:** £280.61
| **Ground Rent:** £170pa | **Council Tax:** Lewisham band D

GROUND FLOOR FLAT
MODERN KITCHEN & BATHROOM
SOUTH FACING GARDEN
SOUGHT AFTER LOCATION

TWO DOUBLE BEDROOMS + STUDY
PERIOD FEATURES THROUGHOUT
OFF-STREET PARKING
CLOSE TO FOREST HILL STATION

Like what you see?

Call **020 8699 6778** or email us at foresthill@stanfordestates.london
to arrange a viewing or request further information





GROUND FLOOR

Entrance Hall

Pendant ceiling light, storage cupboard, radiator, fitted carpet.

Reception Room

4.85m x 3.84m (15' 11" x 12' 7")

Sash windows, pendant ceiling light, fireplace, radiator, fitted carpet.

Kitchen

3.71m x 2.69m (12' 2" x 8' 10")

Window and door to patio, ceiling light, fitted kitchen units, 1.5 bowl sink with mixer tap and drainer, integrated dishwasher, plumbing for washing machine, oven with gas hob, extractor hood, radiator, wood flooring.

Bedroom

3.87m x 3.82m (12' 8" x 12' 6")

Sash bay windows, pendant ceiling light, plantation shutters, fireplace, radiator, fitted carpet.

Bedroom

4.26m x 3.61m (14' 0" x 11' 10")

Sash window, plantation shutters, pendant ceiling light, fireplace, radiator, fitted carpet.

Study

2.82m x 2.58m (9' 3" x 8' 6")

Sash windows, pendant ceiling light, fireplace, wood flooring.

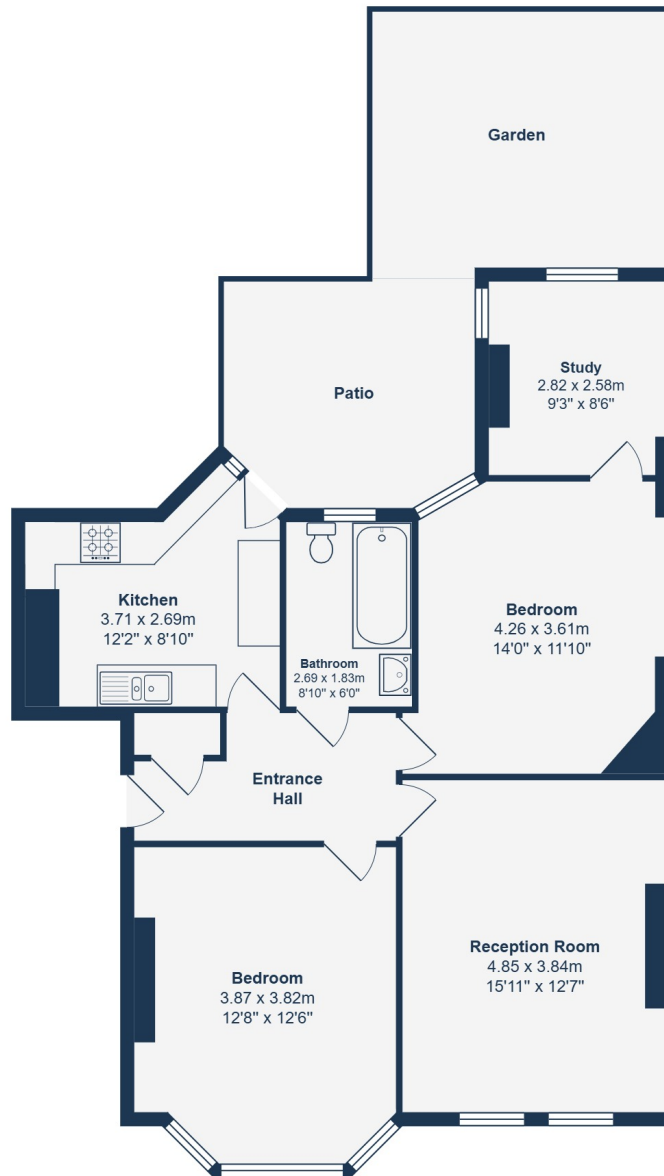
Bathroom

2.69m x 1.83m (8' 10" x 6' 0")

Inset ceiling spotlights, bathtub with overhead and handheld showers, washbasin on vanity unit, WC, heated towel rail, tile flooring.

OUTSIDE

Private Patio & Communal Garden



Ground Floor

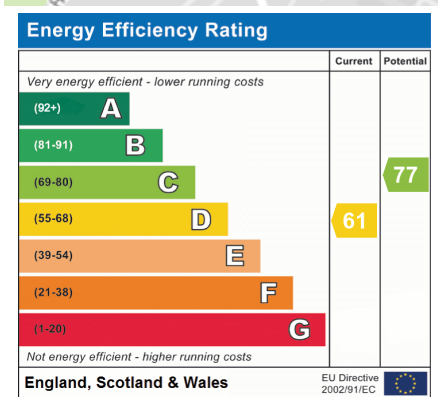
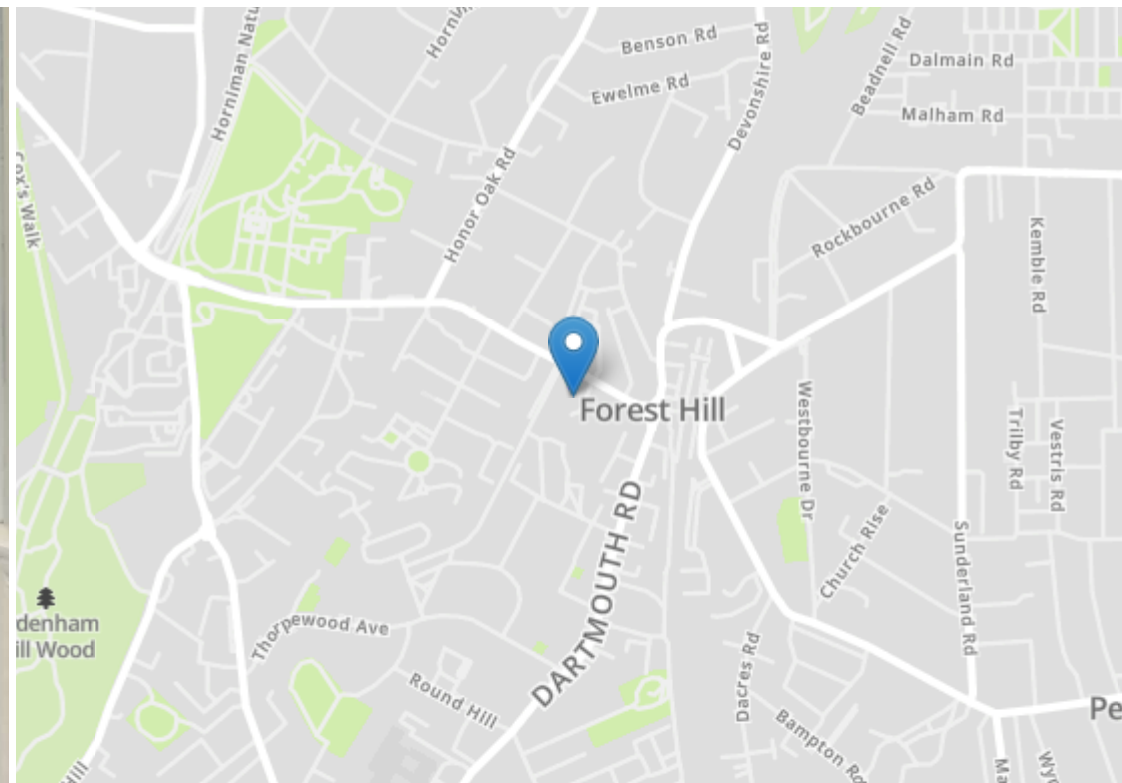
Total Area: 83.2 m² ... 895 ft² (excluding patio & garden)

Drawn for Stanfords Sales & Lettings

This floorplan is for illustrative purposes only. Whilst every effort has been made to ensure the accuracy of the plan, the dimensions and total area are approximated only and should not be relied upon.







Robert Stanford Estates property particulars are produced in accordance with the Consumer Rights Act (2015) and should not be construed as a contract or offer. The contents of these property particulars are to provide a general illustration only and are inconsequential to any decisions to purchase a property. A potential buyer accepts that all representations made by these particulars are made in good faith on behalf of the seller and require verification by a buyers' legal and professional representatives prior to an exchange of contracts. We offer no guarantees for any structural component, service or appliance and while we make every effort to take accurate measurements and distances, they are illustrative only. Any reliance you place on information within these particulars is therefore strictly at your own risk.