



New Street, Shefford, Bedfordshire. SG17 5BW







## 3 Bedroom Terraced House

### Offers in Excess of £310,000 Freehold

Charming Period three-bedroom home offering a wonderful living experience, set within a lovely garden and conveniently located close to local schools, just a short walk into Shefford town centre.

Upon entering, you'll be welcomed into a spacious living area perfect for relaxing and entertaining. Moving towards the rear of the property, you'll discover a modern, fitted kitchen ideal for family meals and gatherings. The ground floor is further enhanced by a three-piece bathroom suite and a bright, well-sized conservatory that provides additional living space.

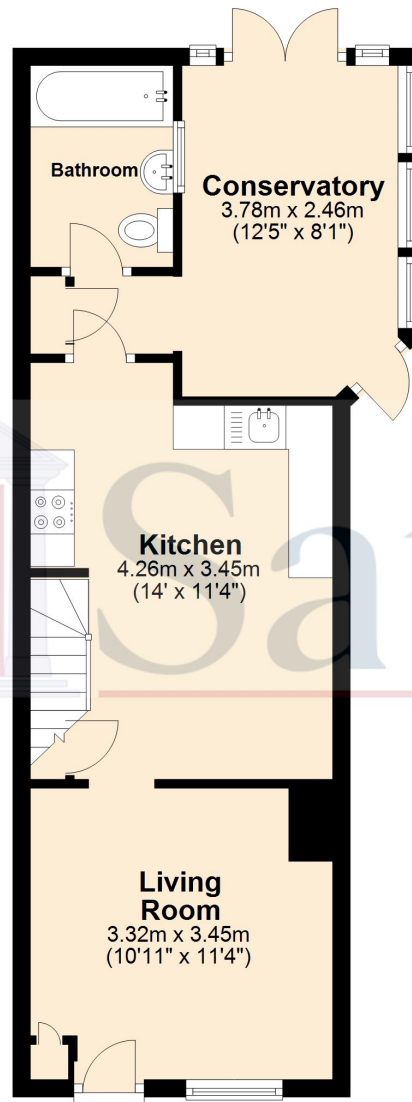
Upstairs, the characterful cottage features three comfortable bedrooms and a newly fitted shower room, making it a perfect family home in a desirable location.

- Three Bedroom House
- Rear enclosed garden
- On street parking
- Period features throughout
- Two Bathrooms
- Walking distance from town centre
- Well sized conservatory
- EPC rating D. Council tax band C

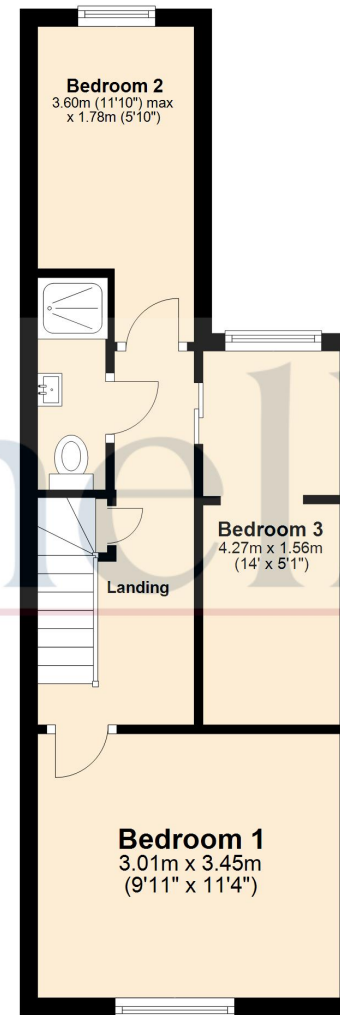


These particulars are a guide only and do not constitute an offer or a contract. The floor plan is for identification purposes only and not to scale. All measurements are approximate and should not be relied upon if ordering furniture, white goods and flooring etc. We have presented the property as we feel fairly describes it but before arranging a viewing or deciding to buy, should there be anything specific you would like to know about the property please enquire. Satchells have not tested any of the appliances or carried out any form of survey and advise you to carry out your own investigations on the state, condition, structure, services, title, tenure, and council tax band of the property. Some images may have been enhanced and the contents shown may not be included in the sale. Satchells routinely refer to 3rd party services for which we receive an income from their fee. If you would like us to refer you to one of these services please ask one of our staff who will pass your details on. We advise you check the availability of the property on the day of your viewing.

## Ground Floor



## First Floor



For illustrative purposes only - NOT TO SCALE - Measurements shown are approximate. The size and position of doors, windows, appliances and other features are approximate.  
Plan produced using PlanUp.