



9 Dents Close, Letchworth Garden City, Hertfordshire. SG6 2TP





3 Bedroom Detached House £400,000 Leasehold

A fantastic three-bedroom detached house located in the Lordship area of Letchworth, a highly sought-after location close to the Lordship Farm School, with fantastic links to the A1(m).

- Three bedrooms
- Detached house
- Garage
- Driveway
- Two reception rooms
- Utility room
- Sunny rear garden
- Lease 990 years from 1970
- Council tax band E
- EPC rating D

General Description:

This property is tucked away in a quiet cul-de-sac in the popular area of Lordship, close to the Lordship Farm School. Upon entering the property, you are greeted with a spacious hallway with doors leading into a fabulous dual reception room with a separate study and large sliding doors that open out onto the beautifully kept rear garden. In addition to this, and off the hallway is a utility, downstairs W.C. and kitchen with ample worktop and storage space. Upstairs there are three bedrooms, all with space for wardrobes and furniture. Furthermore, there is a fully fitted modern three-piece bathroom suite. Outside is a garage with a large private driveway. Early viewing is recommended to avoid disappointment.

Step outside, and you will find a beautiful well kept private rear garden which is mainly laid to lawn, has a timber shed, patio area, side access to the front and an integral garage.

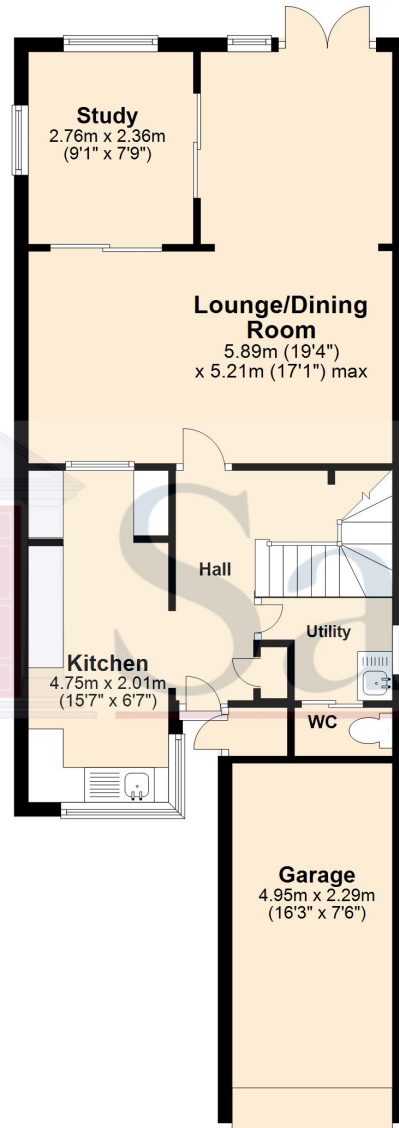
Agents Note:

Draft details yet to be approved by the vendor and may be subject to change.

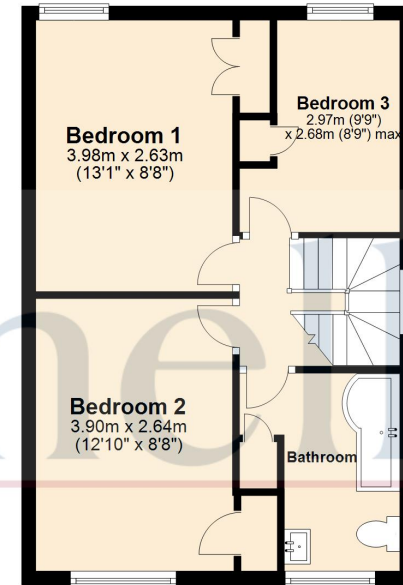


These particulars are a guide only and do not constitute an offer or a contract. The floor plan is for identification purposes only and not to scale. All measurements are approximate and should not be relied upon if ordering furniture, white goods and flooring etc. We have presented the property as we feel fairly describes it but before arranging a viewing or deciding to buy, should there be anything specific you would like to know about the property please enquire. Satchells have not tested any of the appliances or carried out any form of survey and advise you to carry out your own investigations on the state, condition, structure, services, title, tenure, and council tax band of the property. Some images may have been enhanced and the contents shown may not be included in the sale. Satchells routinely refer to 3rd party services for which we receive an income from their fee. If you would like us to refer you to one of these services please ask one of our staff who will pass your details on. We advise you check the availability of the property on the day of your viewing.

Ground Floor



First Floor



For illustrative purposes only - NOT TO SCALE - Measurements shown are approximate.
The size and position of doors, windows, appliances and other features are approximate.

Plan produced using PlanUp.