



Newtown

01684 293246



23 Rosefield Crescent, Newtown, Tewkesbury, GL20 8EQ

This is a lovely traditional, detached bungalow built in the mid 60s and now offers new owners the opportunity to enjoy this home and delightful garden and make it theirs.

The hallway welcomes visitors with doors to all main rooms. At the rear is a lounge with the advantage of an attractive fireplace with a coal effect electric fire. There are patio doors leading into a delightful sun lounge with door out to the garden.

At the front of the bungalow is a dual aspect kitchen, which is fitted with a range of wall and base units with space and plumbing for appliances.

There are two double bedrooms, one at the rear of the property and one at the front with the main bathroom between them.

The bathroom is fitted with a panel bath with shower over, a pedestal wash basin and low level wc.

The bungalow has the benefit of gas central heating and upvc double glazed windows and doors.



The rear garden is lovely, planted with a range of mature plants and shrubs, with a mature hedgerow boundary. There is a patio, garden shed and gated side access to the front of the property.

At the front there is ample block paved driveway parking in front of the detached single garage, with the front being gravel for low maintenance.

Newtown is a popular area of Tewkesbury with easy access to the town centre and being within easy walking distance of a supermarket and convenience store, bus routes and countryside walks it is a great location for those thinking of downsizing.

Tewkesbury is a vibrant town centre with a wealth of sports, health, leisure, education and shopping facilities and being within easy access of the motorway and rail networks, make it an ideal commuter base.



Ground Floor

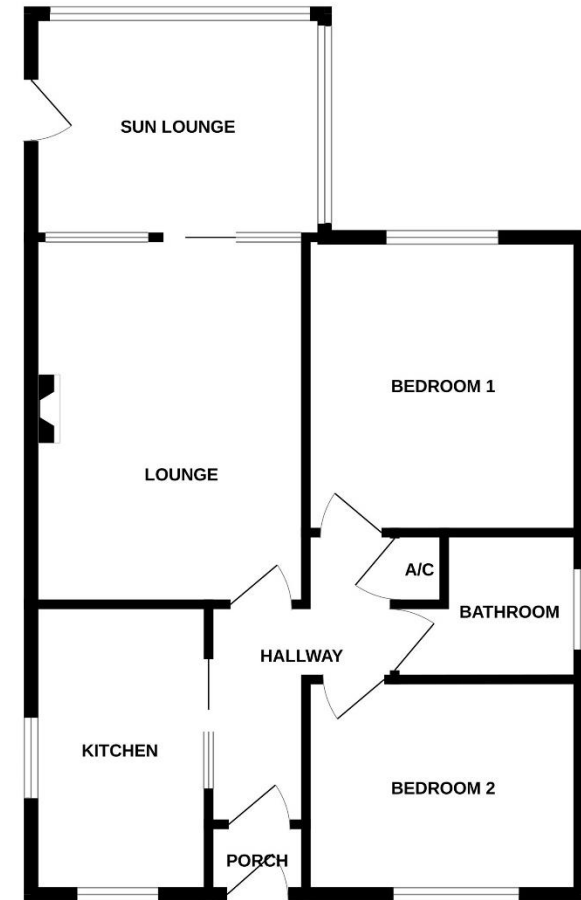
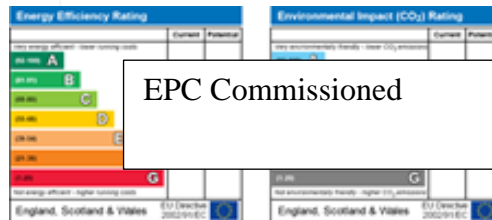
Lounge 15'x11'3"
Kitchen 11'9"x7'3"
Sun Lounge 12'1"x9'

Bedroom 1 12'1"x11'3"
Bedroom 2 11'4"x8'5"
Bathroom 6'x5'7"

Outside

Garage
Garden Shed

Tewkesbury Borough Council Tax Band D



Guide Price £335,000 Freehold

Viewing strictly by arrangement with Engall Castle Ltd
155 High Street Tewkesbury Gloucestershire GL20 5JP
Office hours: Mon – Fri 9am to 6pm, Sat 9am to 4pm
email: sales@engallcastle.com

01684 293 246
www.engallcastle.com



This floorplan is provided for guidance only as an approximate layout of the property and should not be relied upon as a statement of fact.

Agents Note

These property details are set out as a general outline only and do not constitute any part of an Offer or Contract. Any services equipment, fittings or central heating systems have not been tested and no warranty is given or implied by Engall Castle Ltd that these are in working order. Buyers are advised to obtain verification from their solicitor or surveyor. Fixtures and fittings or other items are not included unless specifically described. All measurements, distances and areas are approximate and for guidance only and should not be relied upon for the purposes of fitting carpets or furniture etc. These property details and all statements within this document are provided without responsibility on behalf of Engall Castle Ltd or its employees or representatives and should not be relied on as statements of fact. Prospective purchasers must satisfy themselves as to the accuracy of all details pertaining to the property.

