

Cleyhill Gardens

Chapmanslade , BA13 4EX

COOPER
AND
TANNER



£254,950 Freehold

🚗 2 🛋️ 1 🚿 2 EPC D

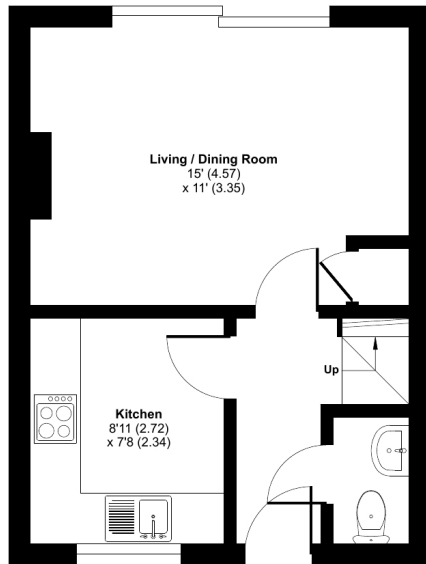
Description

We pleased to offer this lovely, and deceptively spacious mid terrace home that is located in a popular village with far reaching views. The accommodation comprises, entrance hall, cloakroom, kitchen, lounge / dining room, landing, two bedrooms, bathroom. The current seller converted the heating from oil to electric. At the rear is an enclosed garden with access gate to the private allocated resident parking for two cars. the village of Chapmanslade offers a primary school, public house, church and village hall. Nearby towns include Warminster, Westbury and Frome. Private schooling is to be found in Beckington, Warminster and Bath. There are main line stations in Frome, Bath and links to London Paddington from Westbury.

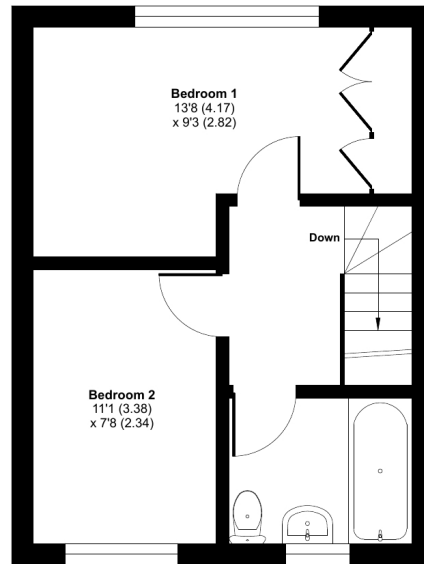
Cleyhill Gardens, Chapmanslade, Westbury, BA13

Approximate Area = 612 sq ft / 56.8 sq m

For identification only - Not to scale



GROUND FLOOR



FIRST FLOOR



Floor plan produced in accordance with RICS Property Measurement Standards incorporating International Property Measurement Standards (IPMS2 Residential). © nichecom 2023. Produced for Cooper and Tanner. REF: 999261



Features

- Modern Home
- Two bedrooms
- Deceptive accommodation
- Views to the front
- Electric heating
- Enclosed rear garden
- Popular and sought after location
- Private allocated parking
- Seller suited

Local Information

- Council Tax Band C
- Tenure Freehold
- EPC Rating D

WARMINSTER OFFICE

Telephone 01985 215579

48-50, Market Place, Warminster, Wiltshire BA12 9AN

warminster@cooperandtanner.co.uk

**COOPER
AND
TANNER**

Important Notice: These particulars are set out as a general outline only for the guidance of intended purchasers and do not constitute, nor constitute part of, an offer or contract. All descriptions, dimensions, reference to condition and necessary permissions for use and occupation, warranties and other details are given without responsibility and any intending purchasers should not rely on the m as statements or representations of fact but must satisfy themselves by inspection or otherwise as to the correctness of each of them.

