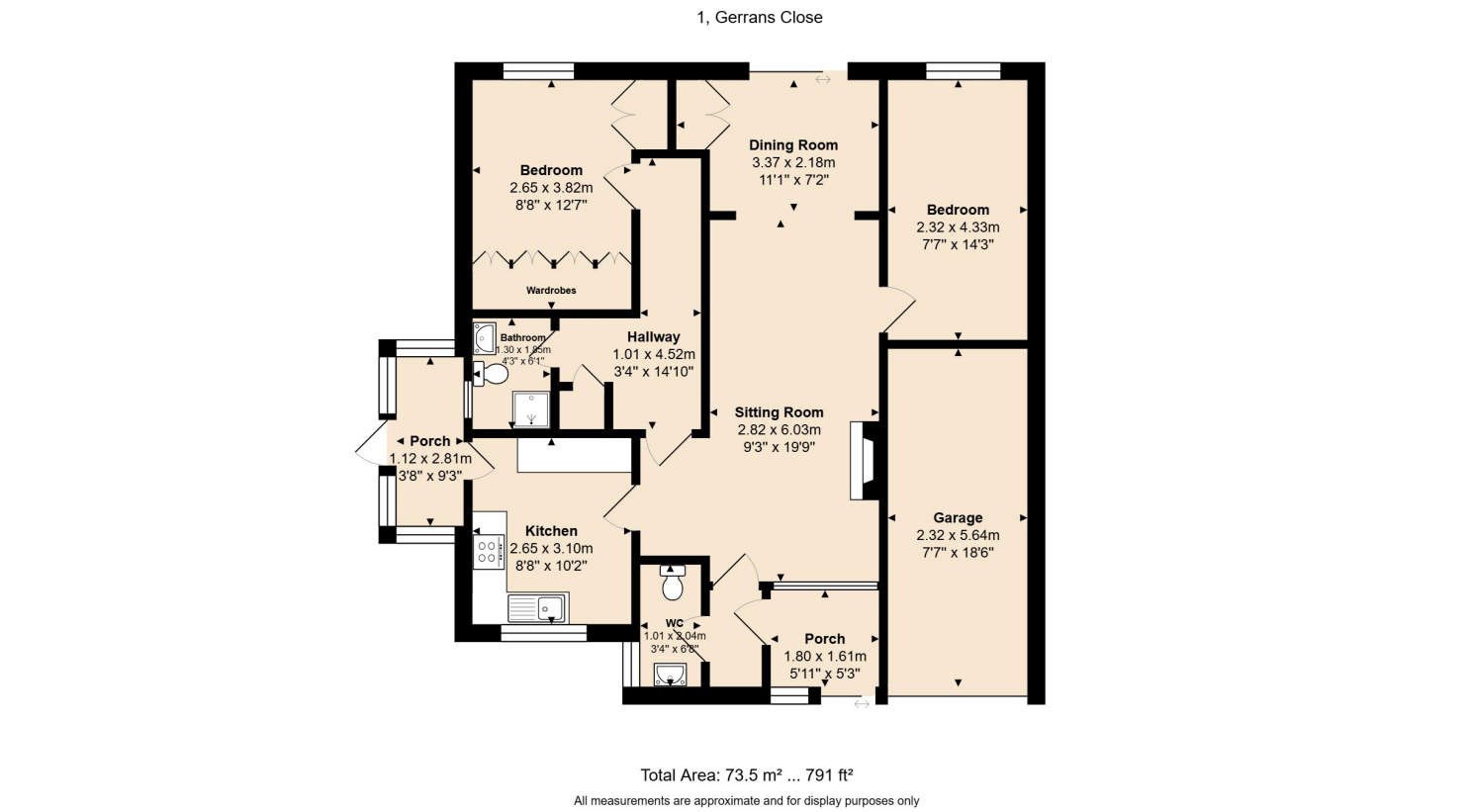


GERRANS CLOSE, ST AUSTELL, CORNWALLPL25 3DN

PRICE £210,000



Disclaimer: The Agent has not tested any apparatus, equipment, fixtures and fittings or services and so cannot verify that they are in working order or fit for the purpose. A Buyer is advised to obtain verification from their Solicitor or Surveyor. References to the Tenure of a Property are based on information supplied by the Seller. The Agent has not had sight of the title documents. A Buyer is advised to obtain verification from their Solicitor. Items shown in photographs are NOT included unless specifically mentioned within the sales particulars. They may however be available by separate negotiation. Buyers must check the availability of any property and make an appointment to view before embarking on any journey to see a property.



FOR SALE AND CHAIN FREE IS THIS SEMI DETACHED TWO BEDROOM BUNGALOW SITUATED IN A POPULAR ESTABLISHED RESIDENTIAL AREA WITH LOCAL SHOPS AND SCHOOLS CLOSE BY. THE ACCOMMODATION IN BRIEF COMPRISES OF GLAZED ENTRANCE PORCH, CLOAKROOM, LOUNGE WITH SEPARATE DINING AREA, KITCHEN, BATHROOM, SIDE CONSERVATORY/PORCH, GARAGE. OUTSIDE DRIVEWAY PARKING, GARDENS TO THE FRONT SIDE AND REAR. THE PROPERTY WOULD BENEFIT FROM SOME IMPROVEMENT.



The Property

For sale and chain free is this semi detached two bedroom bungalow situated in a popular established residential area with local shops and schools close by. The accommodation in brief comprises of glazed entrance porch, cloakroom, lounge with separate dining area, kitchen, bathroom, side conservatory/porch, garage. Outside driveway parking, gardens to the front side and rear. The property would benefit from some improvement

Room Descriptions

Side Entrance Porch/Conservatory

With full glazed door.

Kitchen

10' 3" x 8' 6" (3.12m x 2.59m)
Window to the front, small paned door leading to the lounge, door to the side porch. Sink unit, space for washing machine, range of base units and high level cupboards.

Side porch/Conservatory

9' 6" x 4' 8" (2.90m x 1.42m) With a lean to single pitch roof. Door to the side garden.

Lounge

13' 0" x 19' 9" (3.96m x 6.02m) narrowing to 9' 9" x 19' 9" (2.97m x 6.02m) Large window to the front, arch way to the dining area, night storage heater, door to inner lobby. Stone fireplace, (mock fireplace). Door to the front lobby and door to the cloakroom, door to the front porch.

Dining Room

9' 9" x 7' 4" (2.97m x 2.24m) With window to the rear.

Front Porch

With sliding door to the front of the property.

Cloakroom

With low level W.C., window to the side.

Inner Lobby

With airing cupboard housing hot water cylinder.

Bathroom

7' 3" x 5' 9" (2.21m x 1.75m) Fitted with a three piece suite comprising low level W.C. wash hand basin, low level W.C. window to the side.

Bedroom

10' 3" x 10' 3" (3.12m x 3.12m)
One wall fitted with built in wardrobes, window to the rear. Second built in wardrobe.

Bedroom 2

13' 0" x 7' 6" (3.96m x 2.29m)
Window to the rear.

Garage

7' 6" x 18' 0" (2.29m x 5.49m) With metal and over door.

Outside

To the front is a small driveway providing parking for one car and a mature garden to the front side and rear.