



Fair Lawn, Ala Road, Pwllheli, Gwynedd. LL53 5BL

- PRIVATE PARKING
- ATTACHED GARAGE
- PRIVATE BALCONY
- CHARACTER FEATURES
- 2350 SqFt
- OPEN FIRE
- 1960'S ARCHITECT DESIGNED
- ORIGINAL PARQUET FLOORING

PROPERTY DESCRIPTION

Fair Lawn offers a character-filled family home with private balcony and countryside views. A fantastic opportunity to acquire a generous family home offering both character and great potential, perfectly situated on the peaceful outskirts of the popular seaside market town of Pwllheli, Gwynedd.

Location and Setting

Nestled on a quiet, private road, this delightful property overlooks picturesque fields and woodland, providing a tranquil retreat while remaining just moments from the town's amenities. The house benefits from a desirable south-facing aspect, ensuring bright interiors throughout the day.

Property Features

Briefly comprising of four generous double bedrooms and an office, a family bathroom and a separate w/c, a semi open plan kitchen diner and snug with a separate living room. This home is full of charm and period details. The welcoming entrance hall and spacious living room both feature beautiful parquet flooring, adding a touch of elegance. The living room is further enhanced by an open fire, creating a wonderfully cosy atmosphere for relaxing evenings.

A standout feature is the private, south-facing balcony, offering a lovely spot to enjoy the views and sunshine. This balcony is conveniently accessible from both the upper hallway and the master bedroom.

Outside, you will find private, well-maintained mature gardens to both the front and back of the property, providing excellent outdoor space for family life. Private off-street parking is available, in addition to a large garage with electricity, offering superb storage.

With its excellent proportions and charming features, this house holds great potential to become a superb and long-lasting family home.

Pwllheli and Local Amenities

Pwllheli is a vibrant and historic market town on the beautiful Llyn Peninsula. It offers a wealth of amenities, ensuring everything you need is close to hand. For shopping and dining, you'll find multiple supermarkets and a wide array of shops, including many excellent independent cafés, along with numerous restaurants, bars, and takeaways. The town also provides essential services and education, including a local nursery, primary school, and high school, a doctors' surgery, and a Post Office. Transport links are excellent, with connectivity via multiple bus routes and a train line, making the surrounding areas easily accessible.

This is more than just a house; it's a character home in a fantastic location, ready for its next chapter.

Viewings are highly recommended through Elvins Estate Agents.

Tenure - We believe the property to be Freehold, but potential purchasers should seek clarification from their solicitor prior to an exchange of contracts.

Council Tax Band - F

Services - Mains water, drainage and electricity. Gas fired central heating.

Location Information - Abersoch 6.4 miles . Porthmadog 13.9 miles . Bangor 30.3 miles . Chester 90 miles . Shrewsbury 87.7 miles . Manchester 125 miles.

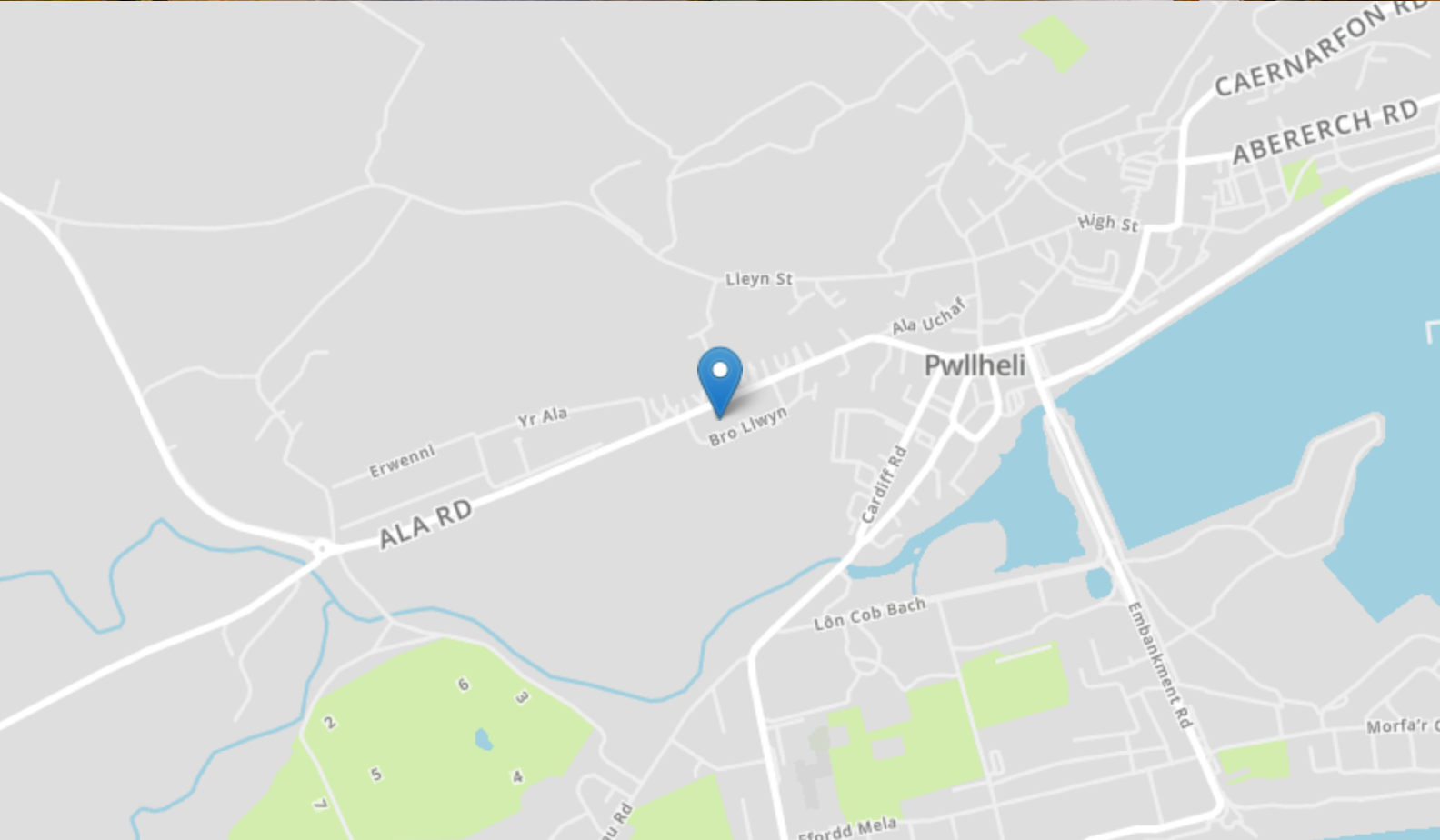
Marketing Appraisal

Thinking of Selling? We are an independent estate agency and have experienced local property experts who can offer you a free marketing appraisal without obligation. It is worth remembering that we may already have a purchaser waiting to buy your home.

MISREPRESENTATION DISCLAIMER: Although our particulars are thought to be materially correct their accuracy cannot be guaranteed and they do not form part of any contract. They are intended as a guide only and purchasers must satisfy themselves by personal inspection.

You may download, store and use the material for your own personal use and research. You may not republish, retransmit, redistribute or otherwise make the material available to any party or make the same available on any website.



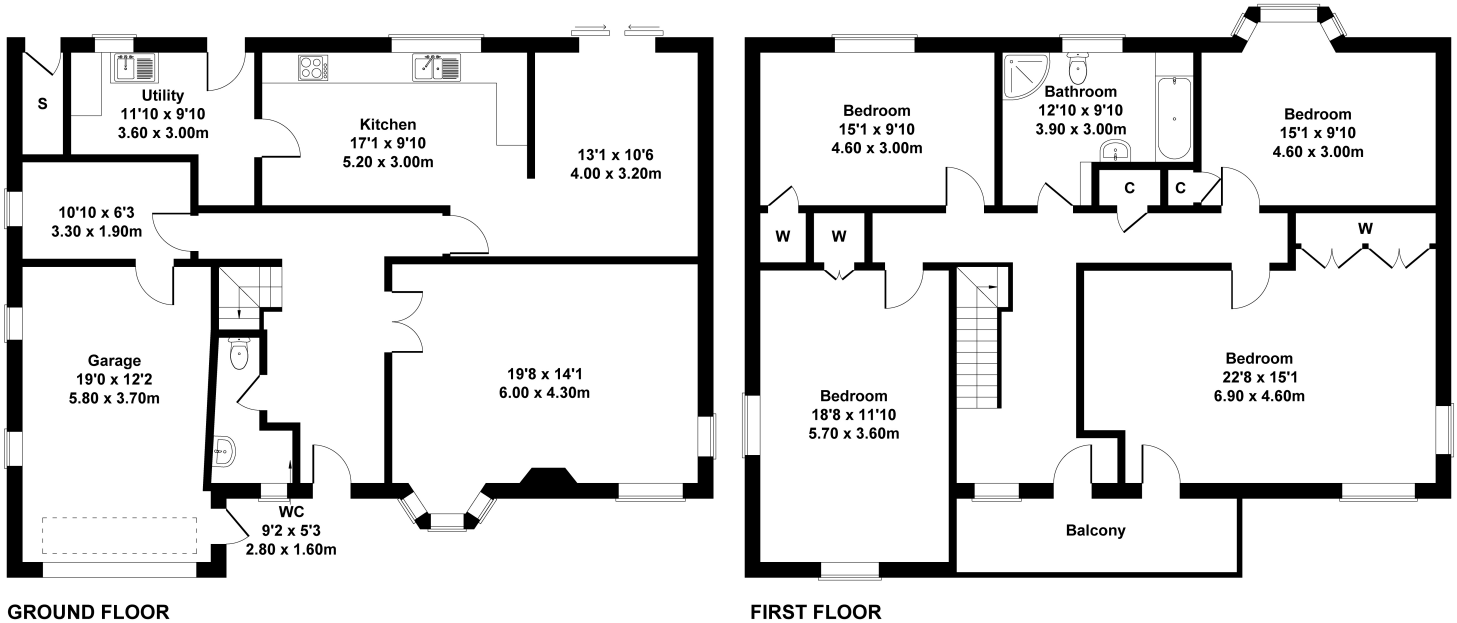


FLOORPLAN & EPC

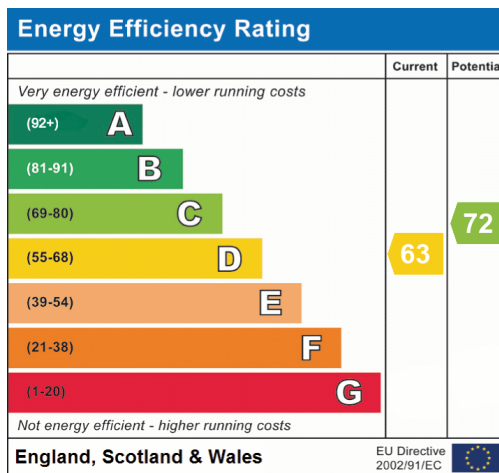


Fair Lawn, Ala Road, Pwllheli. LL53 5BL

Approximate Gross Internal Area
2551 sq ft - 237 sq m



Not to Scale. Produced by The Plan Portal 2025
For Illustrative Purposes Only.



Elvins Estate Agents
6 High Street, Abersoch, LL53 7DY
01758 712003
sales@elvinsestateagents.co.uk