



5 Collington Park Crescent, Bexhill-on-Sea,  
East Sussex, TN39 3RF

£475,000



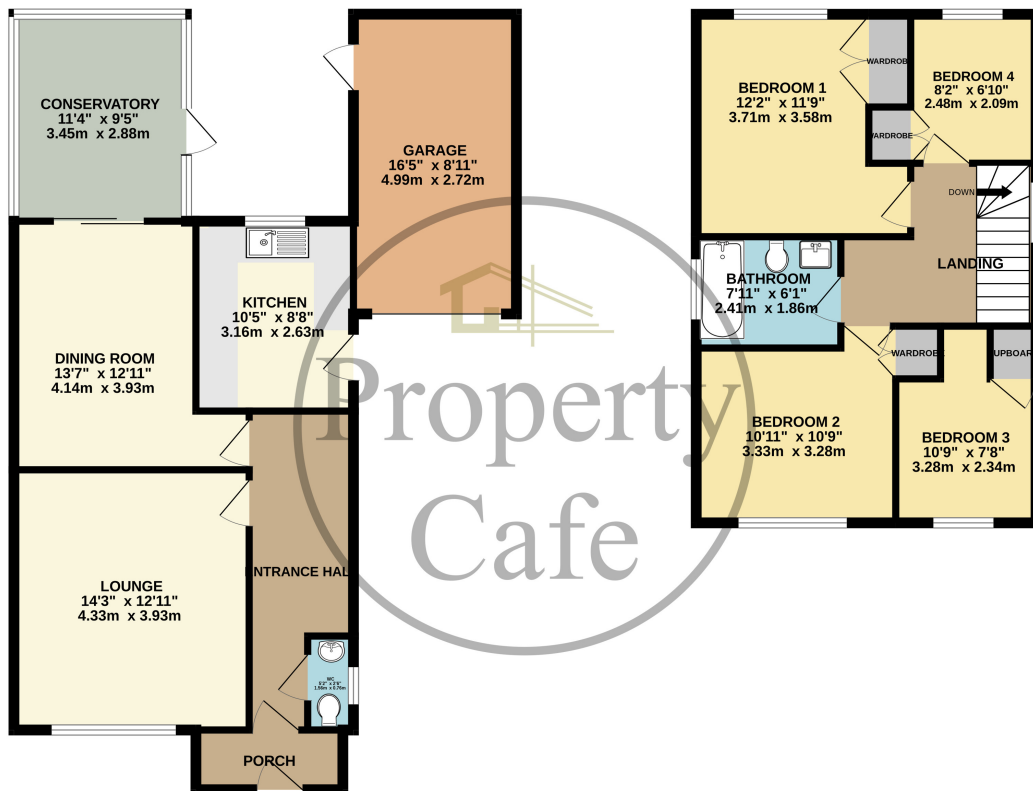
- Detached Family Home
- Four Well Proportioned Bedrooms
- Spacious South Facing Lounge
- Separate Dining Room
- Large Conservatory
- Single Garage
- Off-Road Parking
- Immaculately Presented Throughout
- Sought After Collington Location
- Viewing Highly Recommended





GROUND FLOOR  
797 sq.ft. (74.0 sq.m.) approx.

1ST FLOOR  
517 sq.ft. (48.0 sq.m.) approx.



TOTAL FLOOR AREA : 1314 sq.ft. (122.0 sq.m.) approx.

Whilst every attempt has been made to ensure the accuracy of the floorplan contained here, measurements of doors, windows, rooms and any other items are approximate and no responsibility is taken for any error, omission or mis-statement. This plan is for illustrative purposes only and should be used as such by any prospective purchaser. The services, systems and appliances shown have not been tested and no guarantee as to their operability or efficiency can be given.

Made with Metropix ©2023