



Stonehills

01684 293246



4 Malmsey Close, Stonehills, Tewkesbury, GL20 5FH

Great location for this beautifully presented light home. Detached and linked by its garage to the side, it is located within a cul du sac within the popular Stonehills small development.

A welcoming hallway greets visitors and leads through to the attractive lounge with an ornamental fire surround with inset electric fire. Bifold doors lead through to the dining room which benefits from patio doors leading out to the conservatory.

An archway from the dining area leads into the kitchen which is fitted with a range of modern wall and base units with an integrated halogen hob, electric oven and extractor over.

The conservatory has the benefit of a solid roof, to enable its use all year round making the most of the attractive garden.

Completing the accommodation on the ground floor is a guest wc.

On the first floor there are three bedrooms and a modern shower room. The main bedroom benefits from fitted wardrobes.



The shower room is fitted with a white suite comprising of a walk in shower; vanity unit with inset wash basin and low level back to wall wc.

The property has the benefit of gas central heating and upvc double glazed windows.

Outside the rear garden is delightful, being low maintenance with planted beds and borders; patio area and access into the garage from the garden.

The garage which is attached to the side of the property has an electrically operated garage door and links with the neighbouring property has the benefit of power and light and is long providing ample space for a workbench.

At the front of the property there is driveway parking and vehicle access into the garage and an attractively planted low maintenance front garden.

Stonehills is a small popular development on the outskirts of Tewkesbury benefitting from regular bus links; walking distance of local convenience shops; pub & eaterie and indeed to the town centre.

Tewkesbury is an excellent commuter base with the motorway and rail networks close by. It enjoys a wide range of sport, culture, education and health facilities and is a popular tourist centre.

Ground Floor

Lounge 12'4"x11'11"
 Dining area 11'7"x9'6"
 Kitchen 11'7"x5'8"
 WC

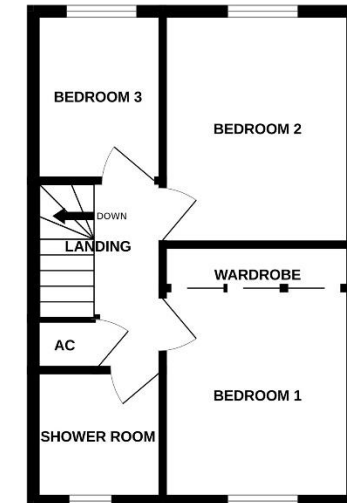
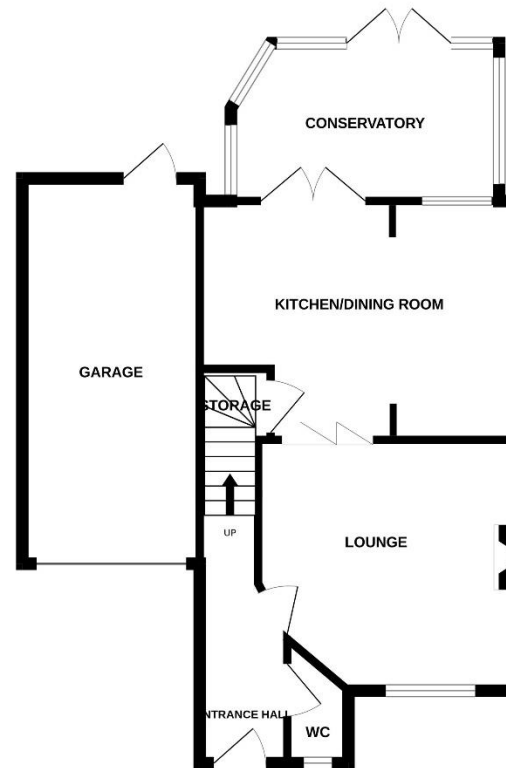
First Floor

Bedroom 1 9'11"x8'11" to wardrobes
 Bedroom 2 11'3"x8'11"
 Bedroom 3 7'11"x6'4"
 Shower Room 6'2"x6'1"

Outside

Garage 18'3"x8'9"

Tewkesbury Borough Council Tax Band C



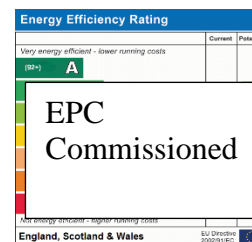
This floorplan is provided for guidance only as an approximate layout of the property and should not be relied upon as a statement of fact.



Guide Price £335,000 Freehold

Viewing strictly by arrangement with Engall Castle Ltd
 155 High Street Tewkesbury Gloucestershire GL20 5JP
 Office hours: Mon – Fri 9am to 5.30pm, Sat 9am to 2pm
 email: sales@engallcastle.com

01684 293 246
www.engallcastle.com

**Agents Note**

These property details are set out as a general outline only and do not constitute any part of an Offer or Contract. Any services equipment, fittings or central heating systems have not been tested and no warranty is given or implied by Engall Castle Ltd that these are in working order. Buyers are advised to obtain verification from their solicitor or surveyor. Fixtures and fittings or other items are not included unless specifically described. All measurements, distances and areas are approximate and for guidance only and should not be relied upon for the purposes of fitting carpets or furniture etc. These property details and all statements within this document are provided without responsibility on behalf of Engall Castle Ltd or its employees or representatives and should not be relied on as statements of fact. Prospective purchasers must satisfy themselves as to the accuracy of all details pertaining to the property.

