



Flat 4 Church Hill Place, Hillborough Close,
Little Common, Bexhill-on-Sea, East Sussex,
TN39 3TW

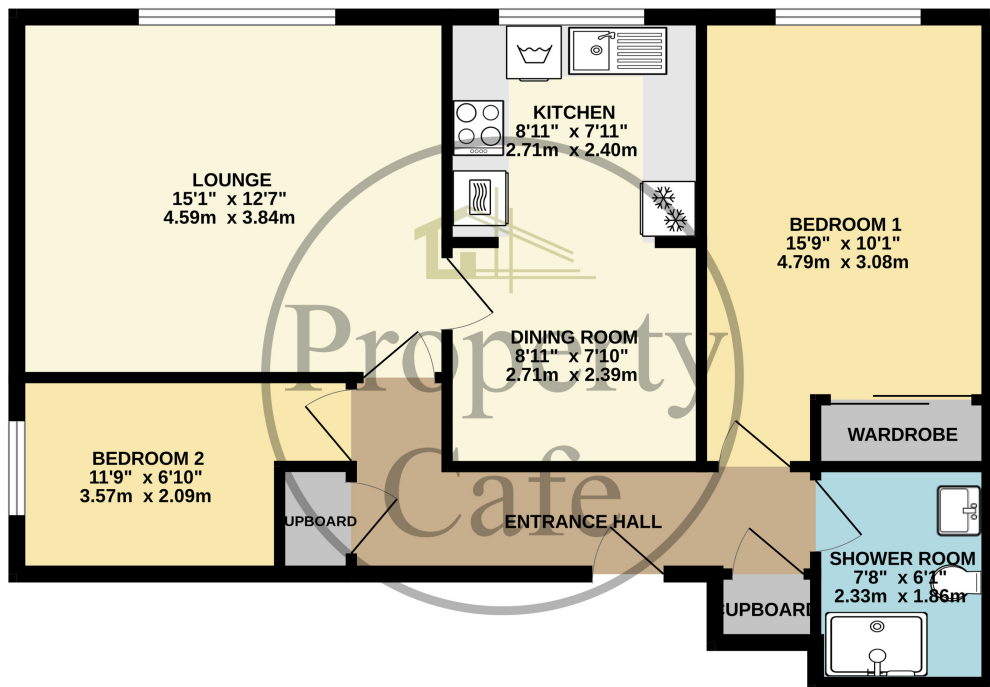
£239,950



- Newly Decorated Spacious 2 Bedroom Apartment
- Re-fitted kitchen with integrated appliances
- Separate dining room
- Two well proportioned double bedrooms
- New bathroom with walk-in shower
- Close to transport, shops and amenities
- Allocated parking/car port/ and visitor parking
- Own loft space
- Share of freehold
- No onward chain
- Ample storage throughout
- Sought after location
- Reasonable service charges
- Viewing highly recommended



FIRST FLOOR APARTMENT
696 sq.ft. (64.6 sq.m.) approx.



TOTAL FLOOR AREA : 696 sq.ft. (64.6 sq.m.) approx.

Whilst every attempt has been made to ensure the accuracy of the floorplan contained here, measurements of doors, windows, rooms and any other items are approximate and no responsibility is taken for any error, omission or mis-statement. This plan is for illustrative purposes only and should be used as such by any prospective purchaser. The services, systems and appliances shown have not been tested and no guarantee as to their operability or efficiency can be given.
 Made with Metropix ©2024