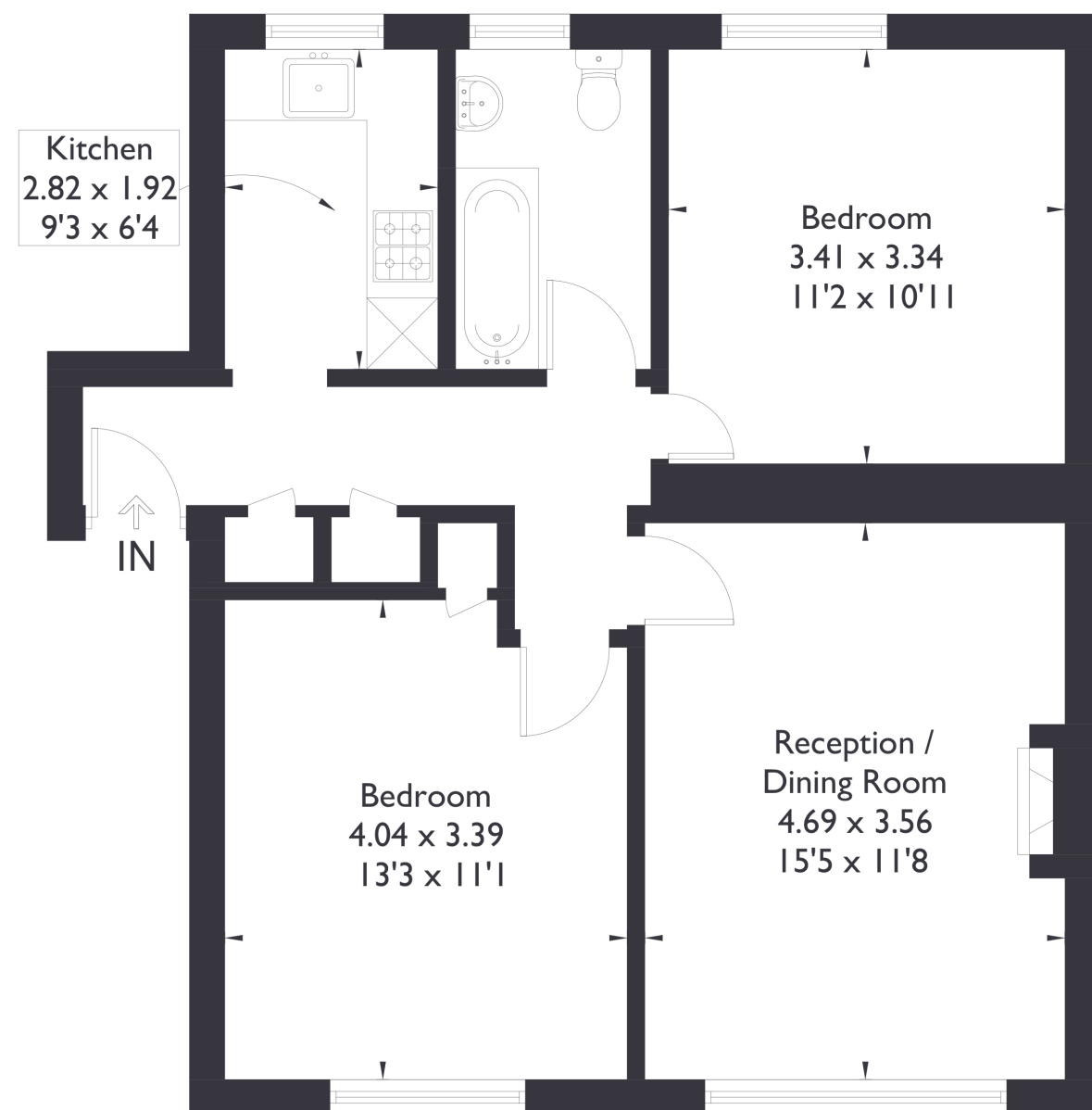


Manor Vale Brentford, TW8

Approximate Floor Area = 63.0 sq m / 678 sq ft



First Floor



2 BEDROOM FLAT

Manor Vale, TW8

£380,000

This stylish two bedroom apartment is in a well appointed Art Deco building on the borders of Brentford, Hanwell and South Ealing.

With generously proportioned and versatile living space, contemporary kitchen, permit parking and communal gardens, it's ideal for professionals and investors alike.

FEATURES

- Two Bedrooms
- One Bathroom
- Close to Brentford Mainline Station
- Contemporary Kitchen
- Communal Gardens
- Close to Boston Manor Tube
- Share of Freehold



2 BEDROOM FLAT

Manor Vale, TW8

This home blends contemporary styling and period character and is beautifully presented in neutral tones.

The wide open spaces of Boston Manor Park are just up the road and the apartment is well located for the Piccadilly Line and Brentford Network Rail Station along with the A4 and M4 motorway, The shops, cafes, and restaurants of Northfield Avenue are also close by.

