







A characterful and spacious five bedroom home offering breathtaking panoramic views over the rolling countryside of the Elham Valley. The property originally dates back to the 1930's and was extended in latter years to provide expansive accommodation making it the ideal property for any modern family. The property further benefits from approximately 1.5 acres of beautiful gardens and 5 acres of woodland. Homes in such an idyllic setting, offering perfect views, are seldom available, therefore an early viewing is highly recommended.

Guide Price £1,250,000

Tenure Freehold

Property Type Detached House

Receptions 4

Bedrooms 5

Bathrooms 1

Parking Double garage and driveway

Heating oil

EPC Rating TBC

Council Tax Band G

Folkestone And Hythe District Council



A home where timeless charm meets stunning scenery

The ground floor boasts a generous entrance hall with oak flooring and impressive staircase offering a grand welcome, spacious living room also with oak flooring, wood burning stove and bay window, dining room again with oak flooring, fireplace and charming original built in drinks cabinet, modern kitchen featuring a cooking range and open plan to breakfast room, utility room, study, rear entrance lobby with cloak cupboards and WC. Upstairs, the first floor landing leads to five bedrooms, family bathroom and separate WC.

Outside

The gardens are a particularly appealing aspect of this property and extend to approximately 1.5 acres. They are predominantly laid to expansive lawns, complemented by mature shrubbery beds, established trees and a small orchard. To the rear of the property lies a charming landscaped area, featuring paved and gravelled sections. There is a large shed and the double garage with log store is approached over a sweeping driveway from the lane which extends to the front of the property providing ample parking and for a good number of vehicles. Extending beyond the garden, lies approximately 5 acres of private woodland offering a rare and enchanting natural retreat providing both tranquility and a sense of seclusion. This expansive area is home to a rich variety of mature trees and is abundant with wildlife. Throughout the seasons, the woodland transforms from bluebells and wildflowers in spring to a golden tapestry of leaves in autumn, creating a constantly evolving landscape that enhances the charm and character of the property.

Situation

This property is situated to the far end of a private road on the edge of the village of Elham. The village offers amenities including a highly regarded primary school, doctor's surgery, two churches, village hall, shop, the recently Refurbished Kings Arms has been transformed inside and out, offering quality food and drink to the villagers and its visitors. In the nearby towns of Folkestone and Ashford there are mainline railway stations with High Speed services to London. Close to the M20 and Channel Tunnel. Regular bus services to Canterbury and Folkestone via surrounding villages.

The accommodation comprises

Ground floor

Entrance hall

18' 9" x 9' 5" (5.71m x 2.87m)

Living room

21' 11" x 15' 0" (6.68m x 4.57m)





Dining room
13' 11" x 12' 2" (4.24m x 3.71m)

WC

Kitchen
10' 7" x 10' 3" (3.23m x 3.12m)

Breakfast room
10' 1" x 9' 5" (3.07m x 2.87m)

Rear entrance hall

Study
14' 9" x 7' 8" (4.50m x 2.34m)

Utility
14' 8" x 5' 8" (4.47m x 1.73m)

First floor
Landing

Bedroom one
22' 2" x 14' 11" (6.76m x 4.55m)

Bedroom two
20' 6" x 13' 7" (6.25m x 4.14m)

Bedroom three
15' 4" x 12' 3" (4.67m x 3.73m)

Bedroom four
12' 2" x 8' 0" (3.71m x 2.44m)

Bedroom five
13' 4" x 6' 8" (4.06m x 2.03m)

WC

Bathroom

Outside
Beautiful gardens (Approximately 1.5 acres)

Woodland (Approximately 5 acres)

Shed
19' 7" x 10' 1" (5.97m x 3.07m)

Garage and Log Store
19' 9" x 15' 6" (6.02m x 4.72m) Approached over sweeping driveway and gravel area offering plenty of parking.







Approximate Gross Internal Area (Excluding Outbuildings) = 239 sq m / 2575 sq ft
 Garage & Log Store = 35 sq m / 374 sq ft
 Shed = 18 sq m / 198 sq ft

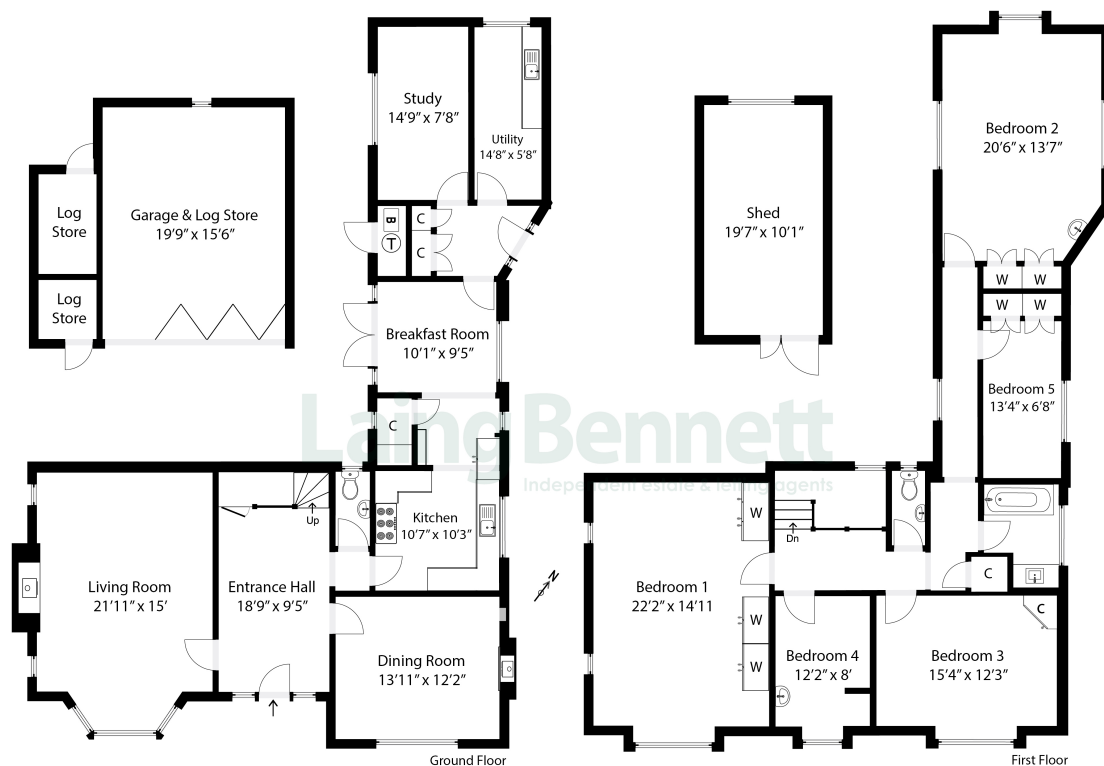
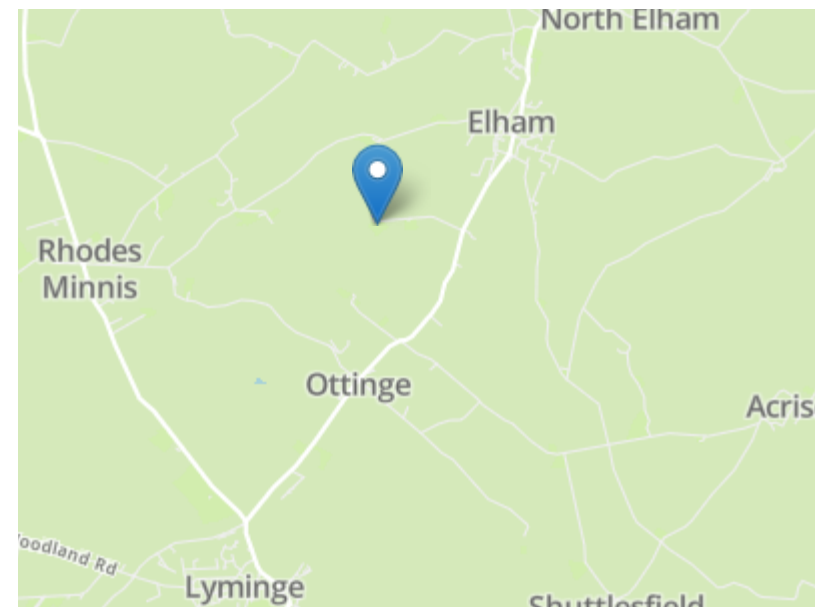


Illustration for identification purposes only. Measurements are approximate. Dimensions given are between the widest points.
 Not to scale. Outbuildings are not shown in actual location.
 © Unauthorised reproduction prohibited - chriskemps@hotmail.com



Need to book a viewing?

If you would like to book a viewing please contact our office on 01303 863393 or email sales@laingbennett.co.uk

See all our properties at



www.laingbennett.co.uk

The Estate Office
 8 Station Road
 Lyminge
 Folkestone
 Kent
 CT18 8HP



These property details are intended to give a fair description and give guidance to prospective Purchaser/Tenant. They do not constitute an offer or contract of Sale/Tenancy and all measurements are approximate. While every care has been taken in the preparation of these details neither Laing Bennett Ltd nor the Vendor/ Landlord accept any liability for any statement contained herein. Laing Bennett Ltd has not tested any services, appliances, equipment or facilities, and nothing in these details should be deemed to be a statement that they are in good working order or that the property is in good structural condition or otherwise. We advise all applicants to commission the appropriate investigations before Exchange of Contracts/entering into a Tenancy Agreement. It should not be assumed that any contents/furnishing, furniture etc. photographed are included in the Sale/Tenancy, nor that the property remains as displayed in the photographs. No person in the employment of Laing Bennett Ltd has authority to make or give any representation or warranty whatever in relation to this property.