



20 Aspen Close, Staines-upon-Thames, Surrey, TW18 4SW

STUNNING ONE BEDROOM FREEHOLD HOUSE IN MUCH SOUGHT AFTER CLOSE IDEALLY LOCATED WITHIN MOMENTS OF TOWN CENTRE & MAINLINE TRAIN STATION. The property has been extensively updated by the current owners and benefits from a spacious lounge/diner open to luxury fitted kitchen, large double bedroom, modern white bathroom suite and allocated parking. No Onward Chain. Viewings Highly Recommended!

ROOM DESCRIPTIONS

UPVC double glazed door leading to:

Entrance Lobby

Front aspect UPVC double glazed window, cupboard housing meters & fuseboard.

Lounge/Diner

Front aspect UPVC double glazed window, light and power points, TV point, engineered Oak flooring, night-storage heater.



Kitchen

Range of modern fitted units at eye and base level, butchers-block worktops, sink with mixer tap, built-in oven and hob with extractor over, space for washing machine, dishwasher & fridge/freezer. Partly tiled walls and floor. Understairs alcove.



First Floor

Landing

Light point, access to loft space.

Bedroom 1

Front aspect UPVC double glazed windows, light and power points, engineered Oak flooring.



Bathroom

Panel enclosed bath with shower over, low level W.C, pedestal wash hand basin, cupboard housing hot water tank, light and extractor.



Outside

Front Garden

Mainly laid to lawn with pathway to front door.

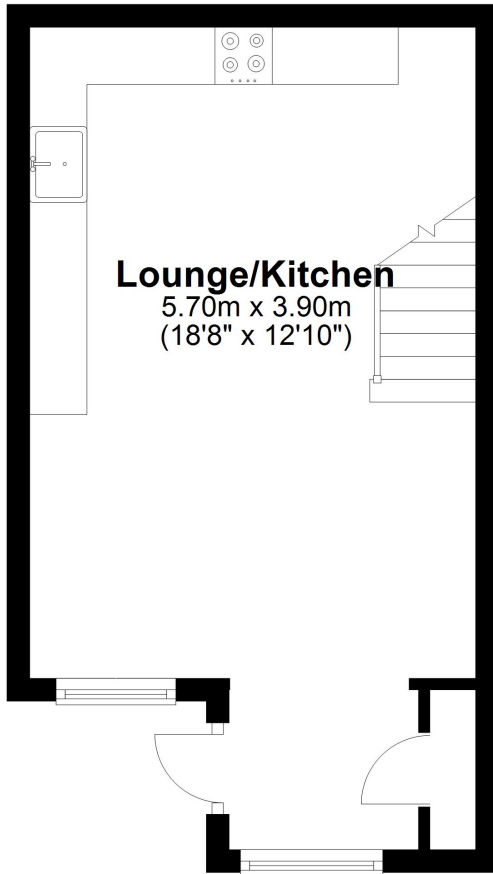
1 Allocated Parking Bay & Numerous Visitors Bays.



FLOORPLAN

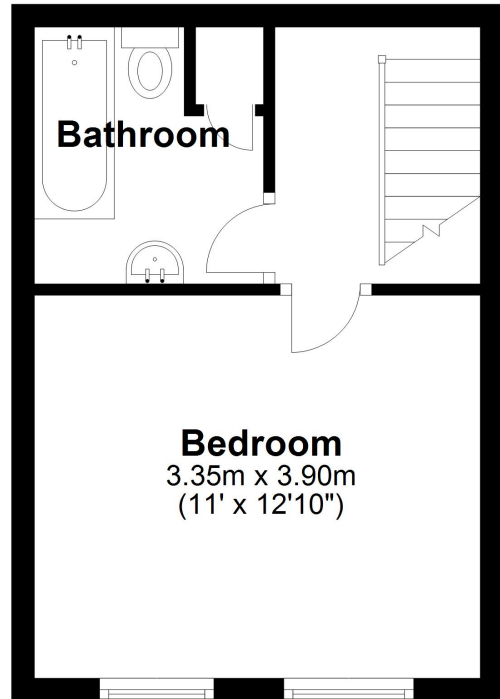
Ground Floor

Approx. 25.5 sq. metres (274.1 sq. feet)



First Floor

Approx. 22.2 sq. metres (239.3 sq. feet)



Total area: approx. 47.7 sq. metres (513.4 sq. feet)