

£375,000

Portland Place, Brighton, 1DG

Flat 2 Bedrooms 2 Bathrooms

Leasehold



An outstanding, fully refurbished garden apartment located in the St. Georges area of Kemptown just moments from the beach.

- Meticulously refurbished throughout
- Just moment from the beach and Sea Lanes
- No onward chain
- High specification throughout
- New electrics and heating
- Private & secluded patio
- Over 700 Sq. Ft.
- Bike and beachwear storage
- En-suite showroom and additional



Russell Chilvers

01273 569 233

Russell@chillhomes.co.uk

3/48 Rochester House,
Rochester Gardens,
Hove, BN3 3AW





Russell Chilvers



01273 569 233

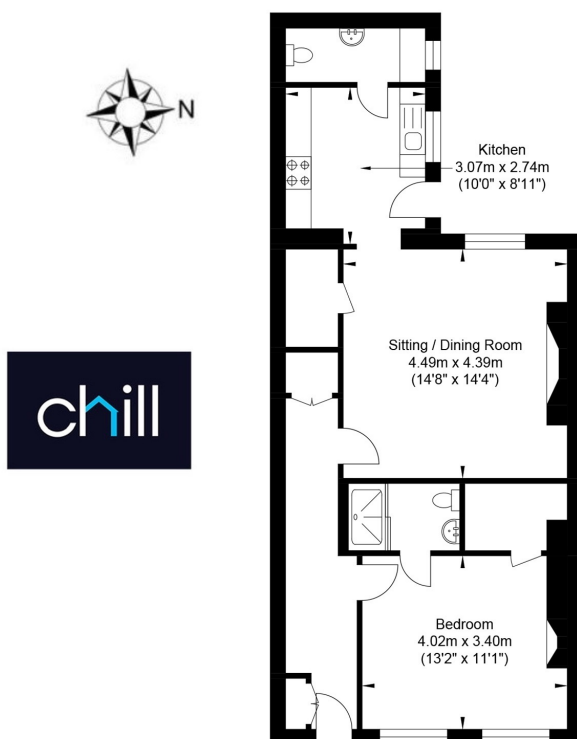


Russell@chillhomes.co.uk

3/48 Rochester House,
Rochester Gardens,
Hove, BN3 3AW

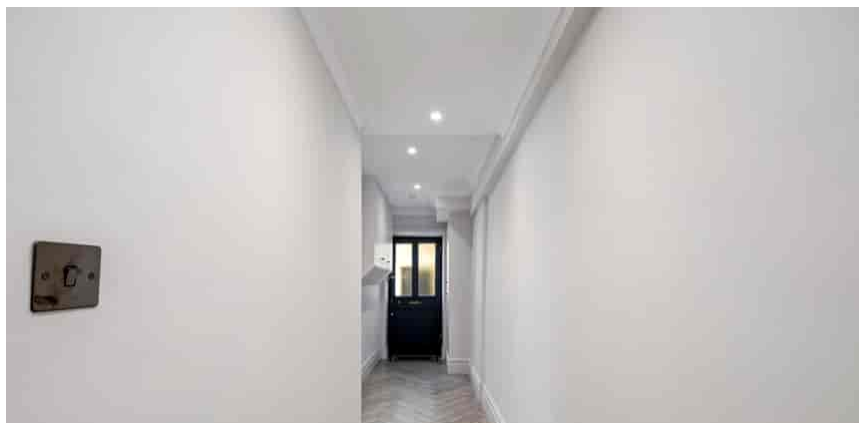


Portland Place



Lower Ground Floor
Approximate Floor Area
713.53 sq ft
(66.29 sq m)

Approximate Gross Internal Area = 66.29 sq m / 713.53 sq ft
Illustration for identification purposed only, measurements are approximate, not to scale.



Russell Chilvers



01273 569 233



Russell@chillhomes.co.uk

3/48 Rochester House,
Rochester Gardens,
Hove, BN3 3AW

