



Estate Agents and Solicitors

2/2, 18 Bulldale Place, Glasgow, G14 0NE

Light & Well-Presented, Two-Bedroom, Second Floor Apartment

Offers Over Price £99,995

espc rightmove  Zoopla
find your happy

Property Description

Light and well-presented, two-bedroom, second-floor apartment, with superb open views of the River Clyde. Forming part of a quiet and leafy riverside development, located in the popular Yoker area, west of Glasgow city centre.

Comprises an entrance hall, living/dining room, kitchen, two double bedrooms, an en-suite shower room, and a bathroom.

Highlights include a modern fitted kitchen and bathroom suites, contemporary flooring, double glazing and gas central heating. In addition, there is good built-in storage including bedroom wardrobes and a Juliet balcony for the lounge.

The development also provides communal greens, a secured entry system and a residential car park.

The reception hall gives access throughout and features modern wood effect flooring, a built-in storage cupboard, and a secured entry system. Southerly facing to the front is a good-sized public room offering space for lounge and dining furniture, with modern flooring and French patio doors with a Juliet balcony offering impressive and peaceful riverside front and skyline views. Also front-facing is the kitchen, with modern fitted units and worktops including a sink with a drainer and an integrated oven and gas hob (sold as seen, no warranty will be given with any of the appliances included in the sale).

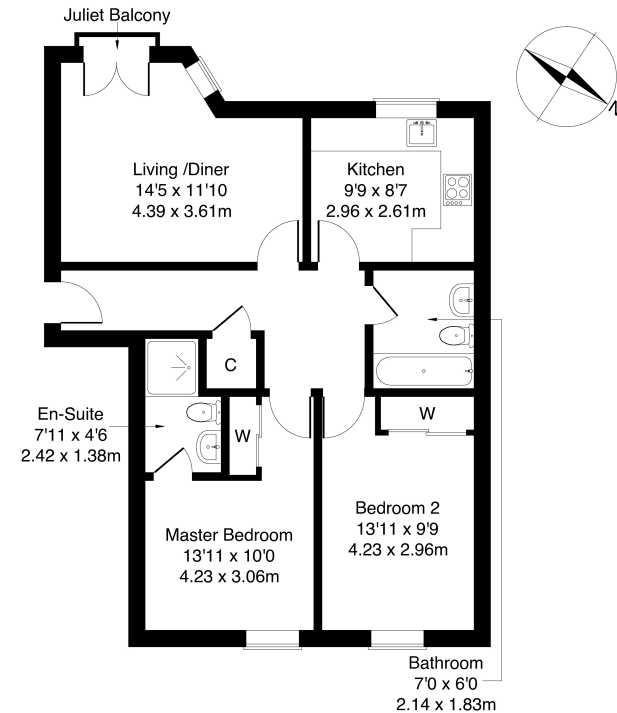
Two well-proportioned bedrooms are set to the rear, and feature carpeted flooring and built-in mirrored wardrobes; whilst the master bedroom also includes a generous en-suite shower room with an integrated cubicle. Completing the accommodation, the family-size bathroom is set internally off the hall, fitted with a three-piece suite and tiled splash walls.

SOLD AS SEEN.



2/2 18 Bulldale Place Glasgow G14 0NE

Approximate Gross Internal Area: (688 sq ft - 64 sq m.)



Legal Disclaimer : Floor-plan and measurements are for illustrative guidance only, and not intended to form part of any contract.

Area Description

Yoker is an area to the west of Glasgow city centre, north of the River Clyde and is ideally placed for local amenities including a Tesco Superstore. With a range of cafes, shops, and restaurants available locally, Braehead and Silverburn shopping centres are also within easy reach for more extensive facilities and shopping. The A739 and the M8 are easily accessible for

Glasgow City Centre, and beyond through the extended motorway network. Local services run throughout, with the area additionally served by railway stations at Garscadden, Scotstounhill and Yoker. There are also numerous parks, walkways and cycle paths in the area, as well as the nearby Knightswood Golf Course and Park for open green spaces and outdoor recreation.





Our Services

- Free pre-sale property valuations
- Great value fixed estate agency fees
- Extensive buyer matching database
- Purchase and sale conveyancing

Contact Us

0345 646 0208

sales@mov8realestate.com

www.mov8.com

Head Office

6 Redheughs Rigg, Edinburgh, EH12 9DQ

Glasgow Office

77 Renfrew Street, Glasgow, G2 3BZ



Estate Agents and Solicitors

