

**48 Butter Row, Wolverton, Milton Keynes,
Buckinghamshire, MK12 5GB**

£119,250 Leasehold

- Two bedroom
- End of terrace house
- 45% Shared ownership
- Service charge is £266.42pcm
- £5,000 fixtures and fittings charge
- Off road parking
- Walking Distance of Wolverton Train Station
- Downstairs cloakroom
- EPC Rating B





GROUND FLOOR

Entrance Hall

Doors leading to:

Lounge

Kitchen Diner

Downstairs Cloakroom

Fitted to comprise two piece suite

FIRST FLOOR

First Floor Landing

Doors leading to:

Bedroom One

Bedroom Two

Family Bathroom

Fitted to comprise three piece suite

EXTERIOR

Rear Garden

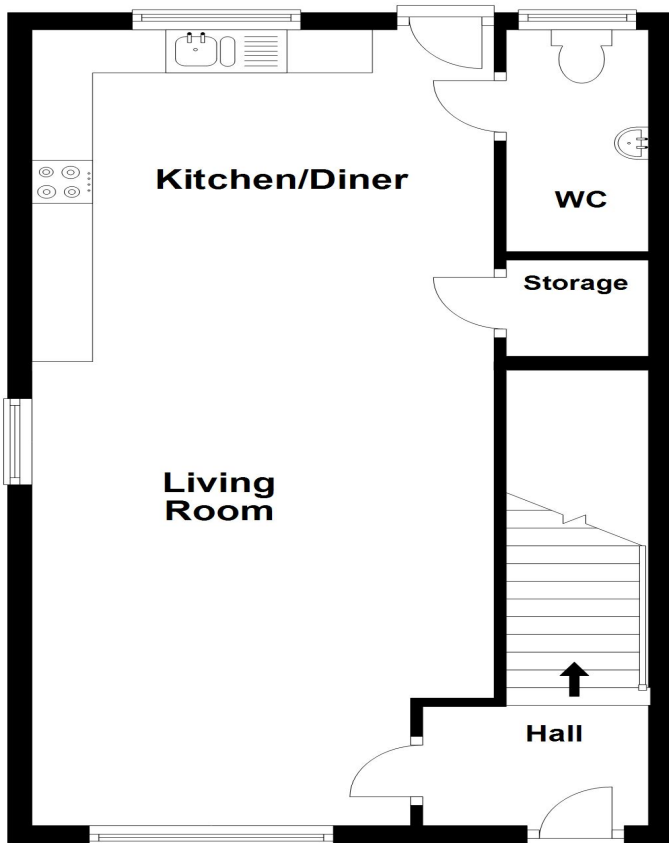
Off Road Parking

Space for one vehicle

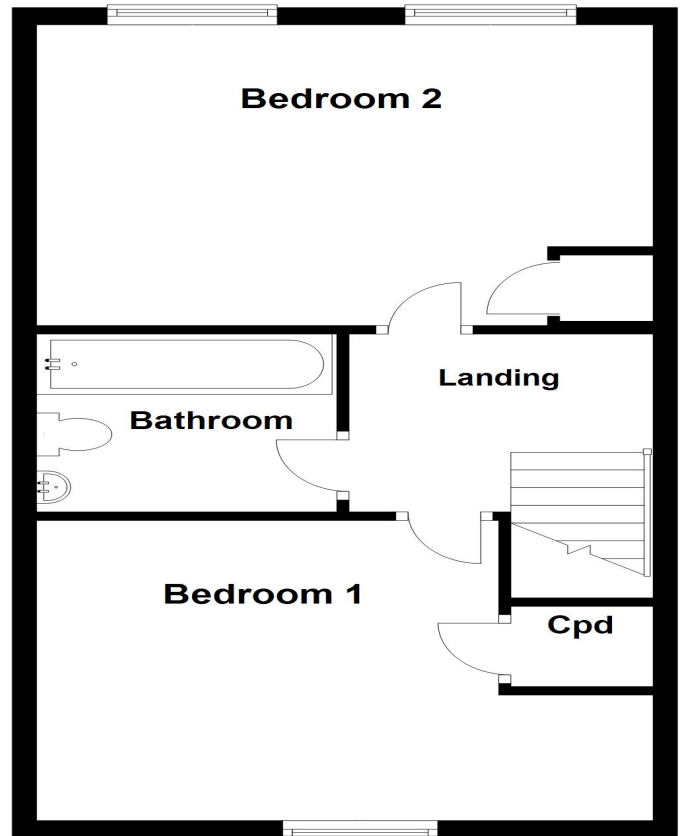
Disclaimer

Whilst we have endeavoured to prepare our sales particulars accurately none of the services, appliances or equipment have been tested. A buyer should satisfy themselves on such matters prior to purchase. Any measurements or distances mentioned in these particulars are for guide reference only. If such particulars are fundamental to a purchase, buyers should rely on their own enquiries. All enquiries should be directed to Elevation Estate Agents in the first instance.

Ground Floor



First Floor



elevation estate agents
Plan produced using PlanUp.

Energy Efficiency Rating		Environmental Impact (CO ₂) Rating	
	Current	Potential	
Very energy efficient - lower running costs			Very environmentally friendly - lower CO ₂ emissions
(92 to 100) A		95	(92 to 100) A
(81 to 91) B	84		(81 to 91) B
(69 to 80) C			(69 to 80) C
(55 to 68) D			(55 to 68) D
(39 to 54) E			(39 to 54) E
(21 to 38) F			(21 to 38) F
(1 to 20) G			(1 to 20) G
Not energy efficient - higher running costs			Not environmentally friendly - higher CO ₂ emissions
England, Wales & N.Ireland	EU Directive 2002/91/EC		England, Wales & N.Ireland
			EU Directive 2002/91/EC

>