



## **20 Hythe Road, Staines-upon-Thames, Surrey, TW18 3ED**

CHARMING THREE BEDROOM DETACHED CHARACTER PROPERTY SITUATED ALONG MUCH SOUGHT AFTER ROAD WITH EXTENSIVE OFF-STREET PARKING & OUTBUILDINGS. The property benefits from a spacious lounge, dining room, fitted kitchen/breakfast room, three double bedrooms, first floor bathroom, large double-height brick-built outbuilding, further timber storage shed, extensive off-street parking. Viewings Highly Recommended!

## ROOM DESCRIPTIONS

---

### Covered Porch

With front door leading to:

### Lounge



Front aspect UPVC double glazed Bay window, light and power points, radiator, understairs storage cupboard.

### Dining Room



Side aspect UPVC double glazed window, light and power points, radiator.

### Kitchen/Breakfast Room



Rear and side aspect UPVC double glazed window, range of fitted units at eye and base level, sink drainer unit, space for cooker, washing machine, fridge/freezer and dishwasher. Side aspect UPVC double glazed door to Garden.

### First Floor

#### Landing

Light and power points, side aspect window, access to loft space.

#### Bedroom 1



Front aspect UPVC double glazed windows, light and power points, radiator, range of built-in wardrobes.

## ROOM DESCRIPTIONS

---

### Bedroom 2



Side aspect UPVC double glazed window, light and power points, radiator, range of built-in wardrobes.

### Bedroom 3



Rear aspect UPVC double glazed window, light and power points, radiator, built-in wardrobe.

### Bathroom



Side aspect UPVC double glazed window, panel enclosed bath, low level W.C, wash hand basin inset to cabinet, radiator, partly tiled walls, light point.

### Outside

#### Front Garden

Extensive driveway leading to rear, pathway to front.

### Rear Garden



Tarmac area, extensive timber shed with light point.

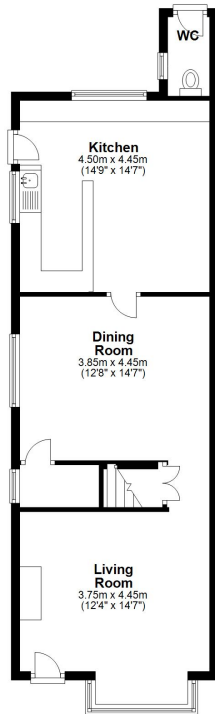
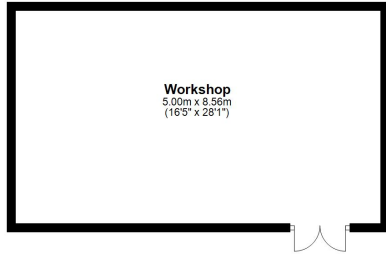
#### Brick-Built Workshop



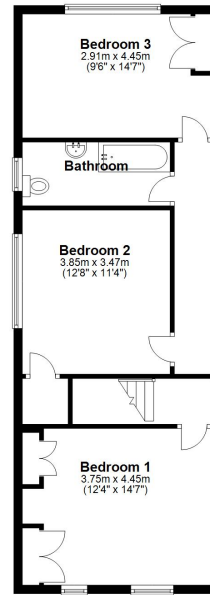
Double-height, light and power.

# FLOORPLAN

**Ground Floor**  
Approx. 105.1 sq. metres (1131.8 sq. feet)



**First Floor**  
Approx. 60.0 sq. metres (645.4 sq. feet)



Total area: approx. 165.1 sq. metres (1777.2 sq. feet)