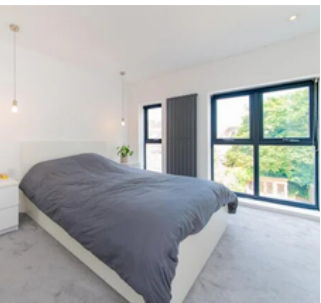




£4,000 PCM

JOHNS AVENUE, LONDON. NW4

- Airy and Bright
- Hendon
- Open Plan Kitchen Reception and Utility
- Four Generous Bedrooms
- One on One Suite
- Basement/ Pantry Area
- Downstairs Guest WC
- Split onto Three Levels
- South Facing Graden
- Summer House
- Entertaining Family and Friends
- Middlesex University
- Hendon (Thameslink) and Hendon Central Underground Station
- Available Now



PROPERTY SUMMARY

We are delighted to present a stunning four bedroom home situated in the hearts of Johns Avenue, Hendon. Upon entering, you are welcomed to a modern and stylish open plan kitchen and reception/ utility, bi-folding doors leading onto a south facing garden with a summer house at the rear end and a guest wc downstairs. This enables residents to enjoy a comfortable living experience with the surrounding area, ideal for entertaining their guests.

This property consists of four generous bedrooms with individual bathrooms (one on one suite), split onto three levels, light and airy with ample of storage space, high ceilings with the extra amenity of a basement/ pantry on the lower ground and off street parking for two cars. The transport links are within walking distance either from Hendon Tube Station (Northern Line) into central station or bus routes into your local area of Golders Green, Colindale or Edgware.

0208 201 5454

info@cubesresidential.com