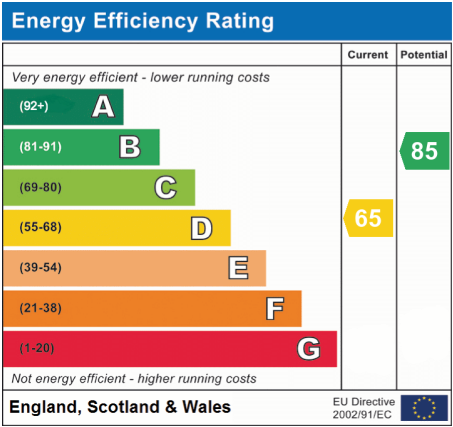
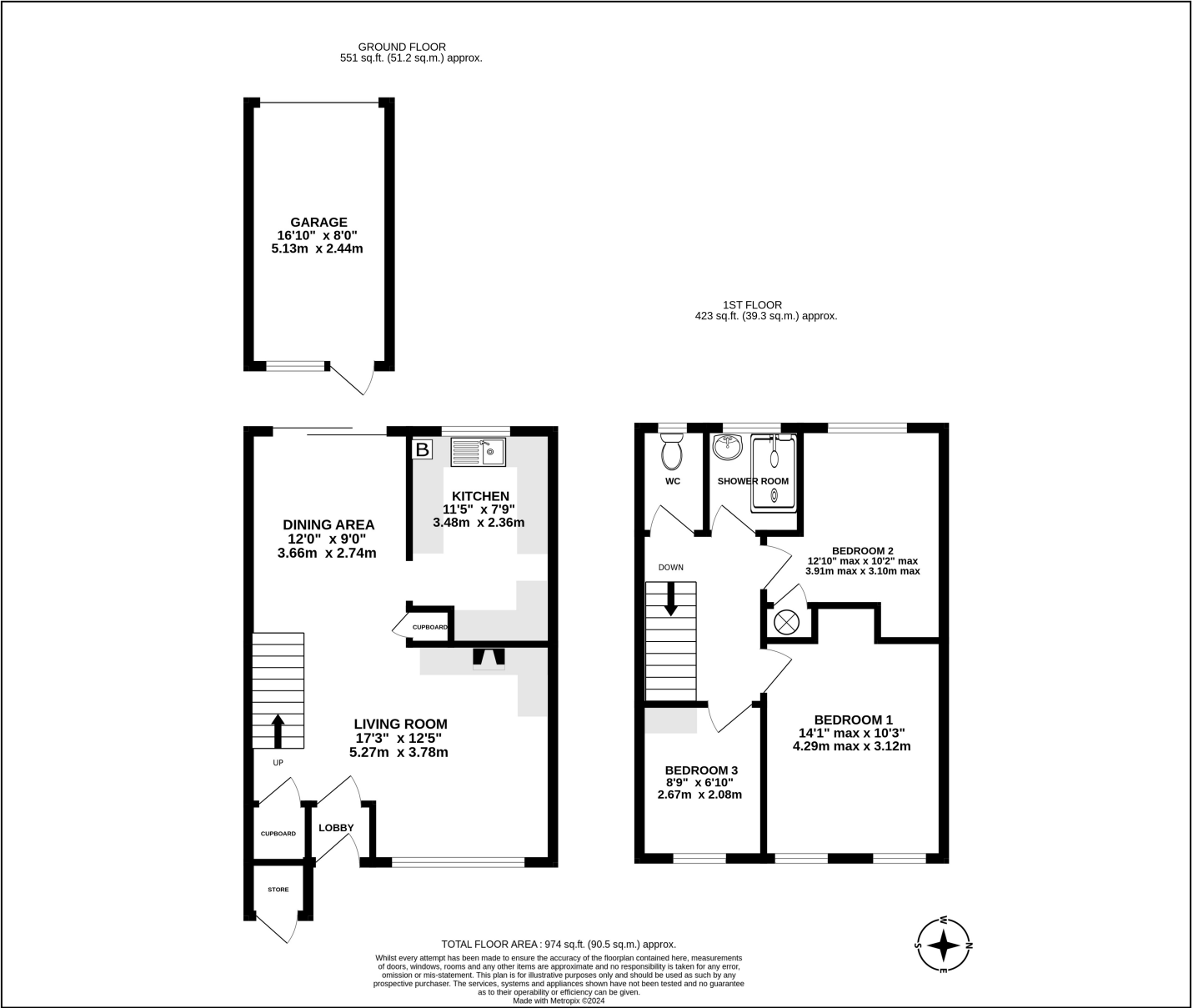


Magdalene Road, Shepperton, TW17 0QN

£410,000



- Three Bedroom Terrace House
- Potential to Modernise
- Within Catchment of Littleton and Saxon Schools
- Freehold
- Detached Garage
- Private Rear Garden
- No Onward Chain
- Council Tax Band D



We have not tested the services or domestic appliances so we cannot verify that they are in working order. The buyer is advised to obtain verification from their solicitor or surveyor. There particulars form no part of any offer or contract and their accuracy cannot be guaranteed.