



1 Firtree Cottage, Bloxworth, Wareham, Dorset. BH20 7EG

- Charming 200-Year-Old Semi-Detached Cottage full of character and history
- Desirable Rural Location in the peaceful and picturesque hamlet of Bloxworth, Dorset
- Stunning Countryside Views over neighbouring farmland and open grassland.
- Fantastic Modernisation Opportunity with potential for full renovation and personalisation.
- Scope for Extension (STPP) – ideal for those looking to expand and add value.
- Generous Wraparound Garden offering ample outdoor space for landscaping or entertaining.
- Three Bedrooms & Family Bathroom with bath and overhead shower.
- Cosy Lounge with Open Coal Fireplace adding to the cottage's rustic charm.
- Private Driveway Access via a shared track, ensuring privacy and seclusion.
- Prime Dorset Location close to Wareham, Poole, and the Jurassic Coast, perfect for walkers and nature lovers.



PROPERTY DESCRIPTION

A Characterful Countryside Cottage with Exceptional Potential Set in the charming rural hamlet of Bloxworth, in the heart of Dorset, 1 Firtree Cottage is a delightful, semi-detached cottage brimming with character. Believed to be around 200 years old, the property offers a fantastic opportunity for full modernisation and the potential to extend (subject to planning permission), making it an ideal project for those looking to create a bespoke country home. The cottage is positioned in a peaceful and picturesque setting, with beautiful views across neighbouring farmland and open grassland. Though the garden is partially overlooked by nearby houses, it remains a standout feature of the property—a generous wraparound plot that offers excellent space for landscaping, outdoor living, or future development. Inside, the property currently comprises a kitchen, separate utility room, and a cosy lounge featuring an open coal fireplace. Upstairs there are three bedrooms and a family bathroom with a bath and overhead shower. The property benefits from a right of access over a shared private driveway, which leads down a track providing access to the cottage and the neighbouring property. 1 Firtree Cottage presents the perfect opportunity to bring a historic home back to life in a stunning countryside location. Bloxworth is a small, sought-after village surrounded by unspoilt Dorset countryside, yet conveniently located for access to Wareham, Dorchester, and Poole. It's ideal for those seeking rural tranquillity without being isolated. The area is popular with walkers, nature lovers, and those drawn to the timeless charm of the Dorset landscape, including nearby Wareham Forest and the Jurassic Coast. This is a rare opportunity to acquire a character property with huge potential, in a truly beautiful setting. Viewings by appointment only.

WHAT3WORDS entry Location: gasp.rediculed.political

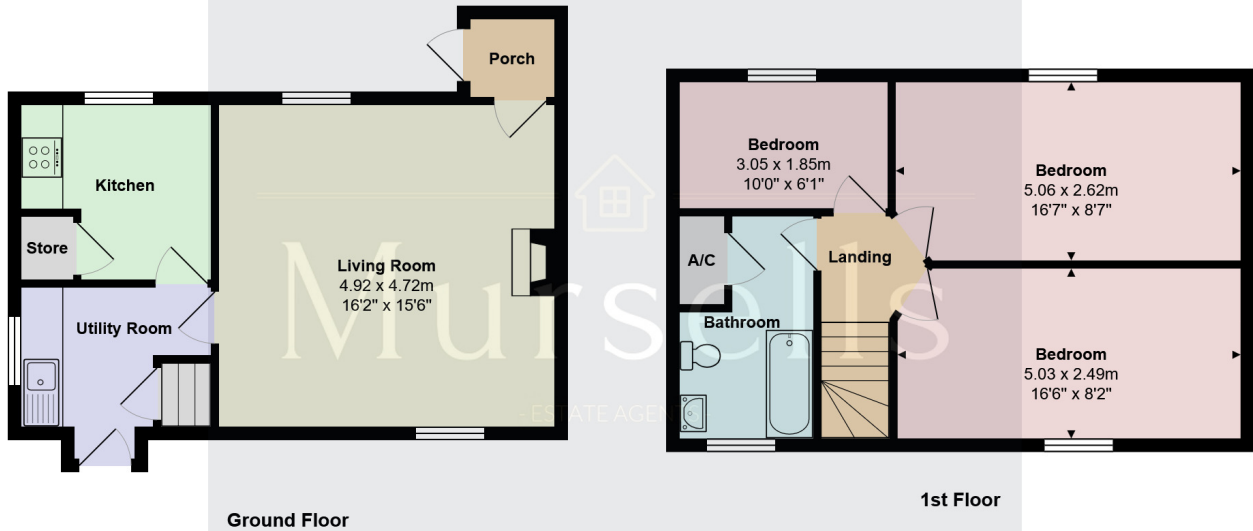


ROOM DESCRIPTIONS



FLOORPLAN & EPC

Mursells

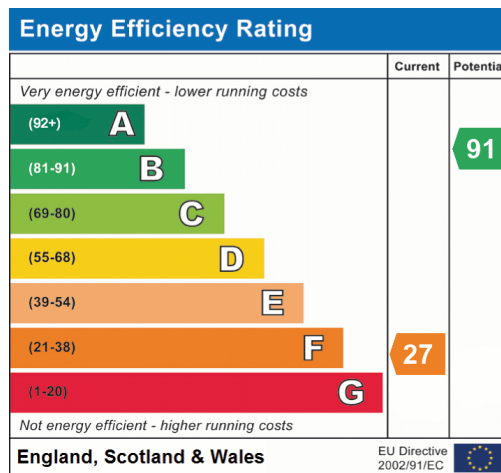


Ground Floor

1st Floor

Total Area: 82.0 m² ... 883 ft²

All measurements are approximate and for display purposes only



Mursells Estate Agents
 8a, High Street, Lychett Matravers, BH16 6BQ
 01202 018811
 info@mursells.co.uk