

01992 917 111

www.christopherstokes.co.uk

78, High Street, Hoddesdon, Hertfordshire, EN11 8ET

christopher  
stokes



Burford Street, Hoddesdon, Hertfordshire EN11 8HX

Offers in Excess of £400,000 Freehold

- Three bedroom end of terrace house
- 65 ft well maintained rear garden
- Walking distance to BR station and Hoddesdon Town Centre
- Catchment area for St Catherines Primary School
- Attractive character property
- Garage with off street parking
- Potential to extend STPP
- Conservatory

\*VIEWING RECOMMENDED ~ HUGE POTENTIAL TO EXTENDED STPP\*

This character, three bedroom, end of terrace family home, is situated within walking distance to Hoddesdon Town Centre, catchment area of St Catherines Primary School, Barclay Park, shops and amenities. The property benefits from a modern fitted kitchen, utility room, conservatory leading to a manicured 65ft rear garden with outbuilding, off street parking for several vehicles, upstairs family bathroom and plenty of scope to extend STPP, with excellent A10/M25 road links.





christopher stokes



christopher stokes



christopher stokes



christopher stokes



christopher stokes



christopher stokes



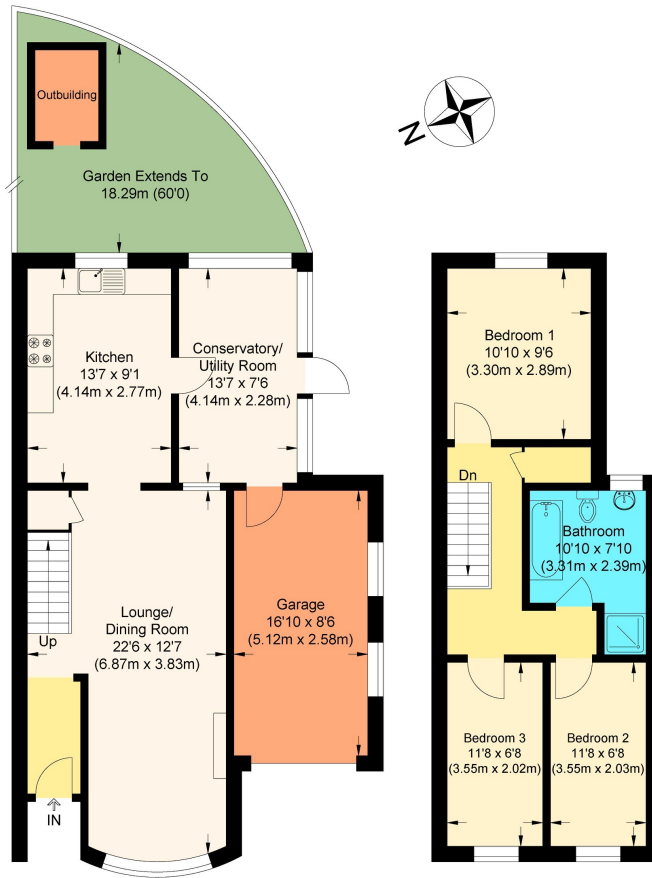
christopher stokes



christopher stokes

These particulars, whilst believed to be accurate are set out as a general outline only for guidance and do not constitute any part of an offer or contract. Intending purchasers should not rely on them as statements or representation of fact, but must satisfy themselves by inspection or otherwise as to their accuracy. We have not carried out a detailed survey nor tested the services, appliances and specific fittings. Room sizes should not be relied upon for carpets and furnishings. The measurements given are approximate. No person in this firm's employment has the authority to make or give any representation or warranty in respect of the property.





**Ground Floor**

**First Floor**



**Burford Street**

Approximate Gross Internal Floor Area : 100.70 sq m / 1083.92 sq ft

(Including Garage & Excludes Outbuilding)

Garage Area : 13.20 sq m / 142.08 sq ft

Illustration for identification purposes only, measurements are approximate, not to scale.

