

£150,000 Shared Ownership

Bromyard House, Bromyard Avenue London W3 7FG



- Guideline Minimum Deposit £15,000
- Second Floor (building has a lift)
- Attractive Period Building
- Walking Distance to East Acton/Acton Central
- Guide Min Income Dual £46.5k | Single £53.2k
- Approx. 458 Sqft Gross Internal Area
- Gated Development with On-Site Concierge
- Permit Parking Available

GENERAL DESCRIPTION

SHARED OWNERSHIP (Advertised price represents 50% share. Full market value £300,000). This stylish, second-floor apartment is presented in excellent condition throughout and features a reception room with bespoke units/shelving and an attractive, open-plan kitchen area. There is a good-sized bedroom, a bathroom with marble style tiles and a storage/utility cupboard in the entrance hallway. The windows are large, double glazed units with a pleasant, leafy aspect. Bromyard House is an impressive, 1920's building. Originally home to the Ministry of Pensions, it was put to a variety of other governmental or military purposes before being converted to residential use. East Acton (Central Line) and Acton Central (London Overground) are within comfortable walking distance while Acton Main Line, for the Elizabeth Line, can be reached by brief bike ride. Acton Park is nearby and Westfield's great range of shops easily accessible via local bus. Permit parking is available within the development.

Housing Association: A2Dominion.

Tenure: Leasehold (125 years from 01/01/2004).

Minimum Share: 50% (£150,000). The housing association will expect that you will purchase the largest share affordable.

Shared Ownership Rent: £329.25 per month (subject to annual review).

Service Charge: £280.63 per month plus optional £40 per month for parking permit (both figures subject to annual review).

Guideline Minimum Income: Dual - £46,500 | Single - £53,200 (based on minimum share and 10% deposit).

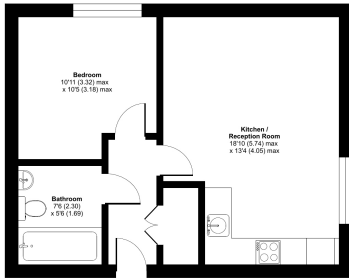
Council Tax: Band D, London Borough of Ealing. Priority is given to applicants living and/or working in this local authority.

This property is offered for sale in the condition seen. The housing association does not warrant to carry out any remedial or redecoration work of a cosmetic nature unless specifically advised in writing. As a general rule, fitted domestic appliances are included in the sale; non-fitted appliances are not. If you require confirmation, you must request this in writing from Urban Moves. The information in this document supersedes any information given verbally either in person or by telephone. Pets not permitted (except assistance animals).



Bromyard House, Bromyard Avenue, London, W3

Approximate Area = 458 sq ft / 42.5 sq m
For identification only - Not to scale



SECOND FLOOR

① Floor plan produced in accordance with RICS Property Measurement (2nd Edition), incorporating International Property Measurement Standards (IPMS Residential). Produced for Urban Moves. REF: 1034001

DIMENSIONS

SECOND FLOOR

Entrance Hall

Reception

18' 10" max. x 13' 4" max. (5.74m x 4.05m)

Kitchen

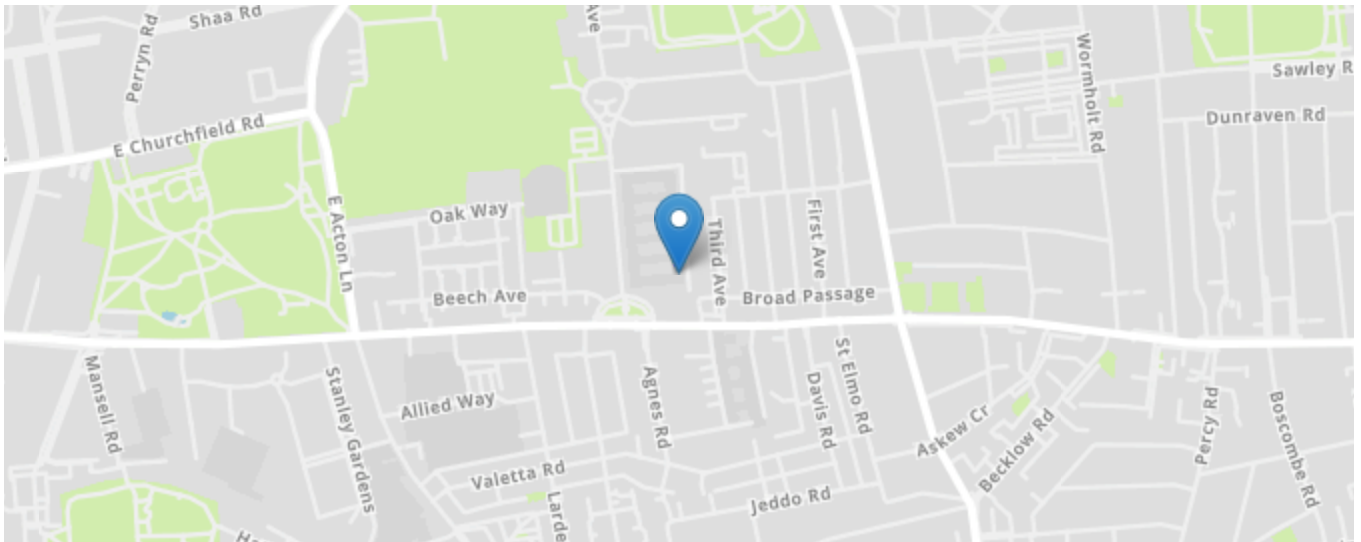
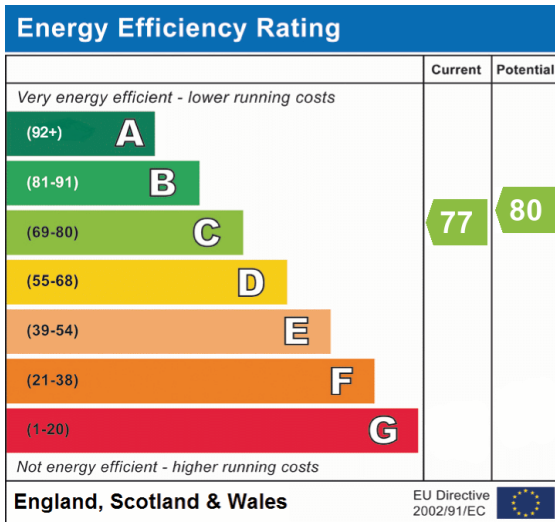
included in reception measurement

Bedroom

10' 11" max. x 10' 5" max. (3.32m x 3.18m)

Bathroom

7' 6" x 5' 6" (2.30m x 1.69m)



All content shown is to be used as a general guideline for the property. None of the contents of this document constitute part of an offer or contract. All measurements, photographs, floor-plans and data provided are only a guideline and should not be relied upon.