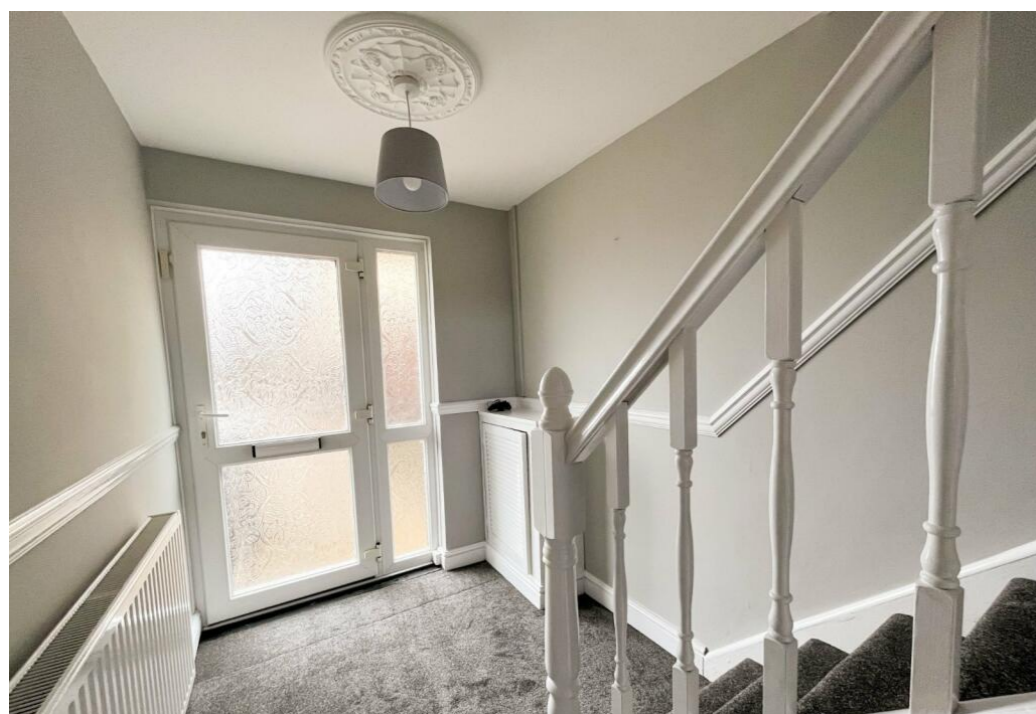




Milton Close
Nailsea
North Somerset
BS48 1HP

Offered for sale with no onward chain, this well presented three bedroom home is ideal for those looking for a quick move. Located in a Cul de Sac within close proximity of the town centre and local schools, the well balanced accommodation briefly comprises; Entrance Hall, Refitted Kitchen/Dining Room, Sitting Room with Jotul Woodburner, three Bedrooms and Family Shower Room. Outside, there are low maintenance gardens to the front and rear.

EPC Rating:
Council Tax Band: B
Tenure: Freehold



£295,000