



Terence Painter

ESTATE AGENTS

- No Forward Chain!
- Two Double Bedroom Sea View Apartment
- Stunning Sea Views Across Viking Bay
- First Floor Apartment
- Share of Freehold
- Situated in Broadstairs Town Centre
- Well Appointed & Spacious Living Accommodation
- Kitchen with Integrated Appliances
- Home Office/Storage Room



Flat 13 Spero Court, 16 Victoria Parade, Broadstairs, Kent. CT101QS.

Share of Freehold £360,000

STUNNING & SPACIOUS SEA FRONT APARTMENT LOCATED IN ONE OF BROADSTAIRS' MOST DESIRABLE AREAS, OFFERING SPECTACULAR UNINTERRUPTED SEA & BEACH VIEWS!

Beautifully appointed and well maintained two bedroom, first floor apartment offers uninterrupted and unbelievable sea views across Viking bay and is being marketed with no forward chain. This property has much to offer and once you are inside the jaw-dropping views speak for themselves. The property benefits from a secure communal entrance with carpeted stairs to all floors, 17'1" lounge/diner/kitchen with a floor to ceiling bay window that allows for stunning views, kitchen with integrated appliances, 16'2" principal bedroom, a second double bedroom, well appointed bathroom and an extra home office/storage room located off the communal landing.

This charming property finds itself situated right in the heart of Broadstairs and offers arguably the best sea views around town! It is in close proximity to all local shops, pubs, bars, restaurants and transport links including the train station.

Call Terence Painter Estate Agents on 01843 866 866 to arrange your viewing!

INTERIOR

Communal Entrance

Entrance into the building is gained via a secure door, the communal hallway is carpeted and has vinyl stairs to all floors.

Entrance Hallway

2.15m x 1.02m (7' 1" x 3' 4") The entrance hallway has a storage cupboard housing the hot water tank, electric radiator and vinyl flooring.

Lounge/Diner/Kitchen

5.21m x 4.13m (17' 1" x 13' 7") The lounge/dining room benefits from a floor to ceiling bay window to the front that allows for stunning views over Viking Bay and the Bandstand, electric radiator, downlights, TV point and carpeted flooring.

The kitchen features high and low level kitchen units, space and plumbing for washing machine & fridge-freezer, integrated electric oven with electric hob inset to roll-edge countertop, sink unit inset to worktop, downlights and vinyl flooring.

Principal Bedroom

4.93m x 2.51m (16' 2" x 8' 2") The principal bedroom has a double glazed window to the rear, electric radiator and carpeted flooring.

Flat 13 Spero Court, 16 Victoria Parade, Broadstairs, Kent. CT101QS.

£360,000

Bedroom Two

4.00m x 2.36m (13' 1" x 7' 9") Bedroom two features a double glazed window to the front with sea views over Viking Bay, electric radiator and carpeted flooring.

Bathroom

3.70m x 0.88m (12' 2" x 2' 11") The bathroom benefits from a double glazed frosted window to the rear, low level w.c, corner panelled bath, wash hand basin, tiled walls and vinyl flooring.

Home Office Room/Storage

2.38m x 1.78m (7' 10" x 5' 10") An extra room accessed via the communal hallway that features two double glazed windows to the rear, power, lighting and carpeted flooring. A good sized home office space/storage room.

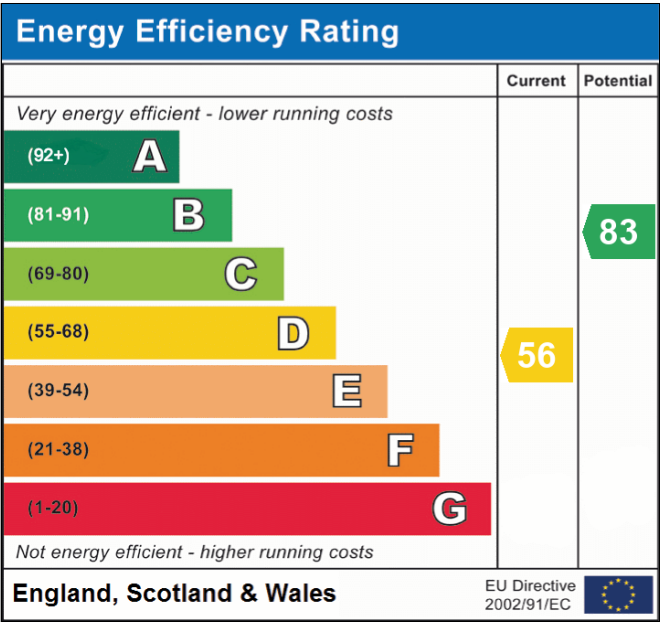
Charges & Lease Information

- There is a £375 charge every 6 months (£750 per annum) this covers building insurance.
- There is approximately 950 years remaining on the lease.
- The property is share of freehold.
- Council Tax Band is B.



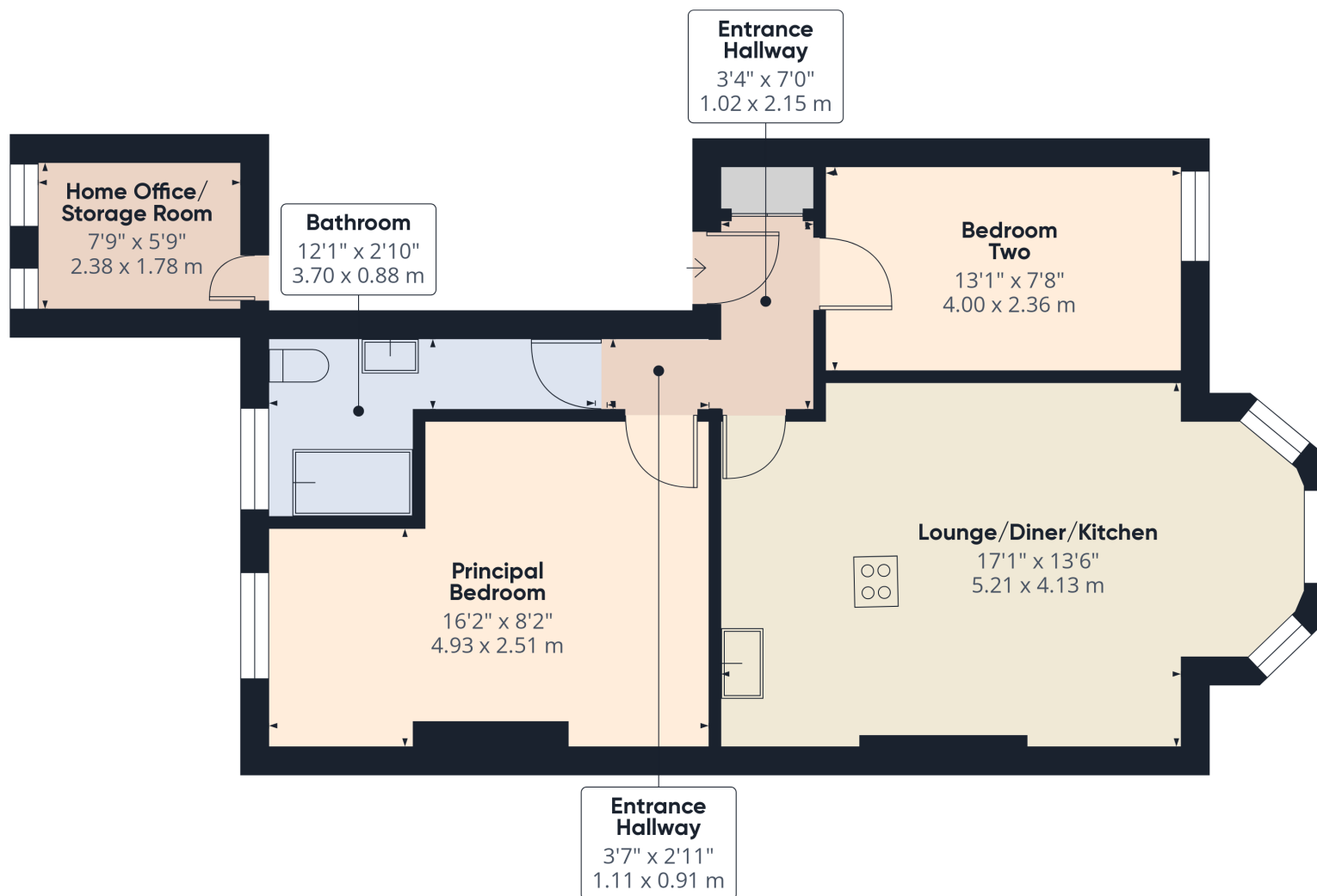
Flat 13 Spero Court, 16 Victoria Parade, Broadstairs, Kent. CT101QS.

£360,000



Viewing strictly by prior appointment with the Selling Agents
TERENCE PAINTER.
 Email: sales@terencepainter.co.uk
 Prospect House, 44 High Street, Broadstairs, Kent, CT10 1JT.

These particulars do not constitute any part of an offer or contract. None of the statements contained in these particulars are to be relied on as representations of fact. Any intending purchaser should satisfy themselves by inspection or otherwise as to the correctness of the statements contained in these particulars. The Vendor does not make or give, and neither Terence Painter Properties, nor any person in its employment has any authority to make or give, any representation or warranty whatsoever in relation to this property. The mention of any appliances and/or services in these sales particulars does not imply that they are in full and efficient working order.



Approximate total area⁽¹⁾

679.31 ft²

63.11 m²

(1) Excluding balconies and terraces

While every attempt has been made to ensure accuracy, all measurements are approximate, not to scale. This floor plan is for illustrative purposes only.

Calculations were based on RICS IPMS 3C standard. Please note that calculations were adjusted by a third party and therefore may not comply with RICS IPMS 3C.

GIRAFFE360

Flat 13 Spero Court, 16 Victoria Parade, Broadstairs, Kent. CT101QS.

£360,000