



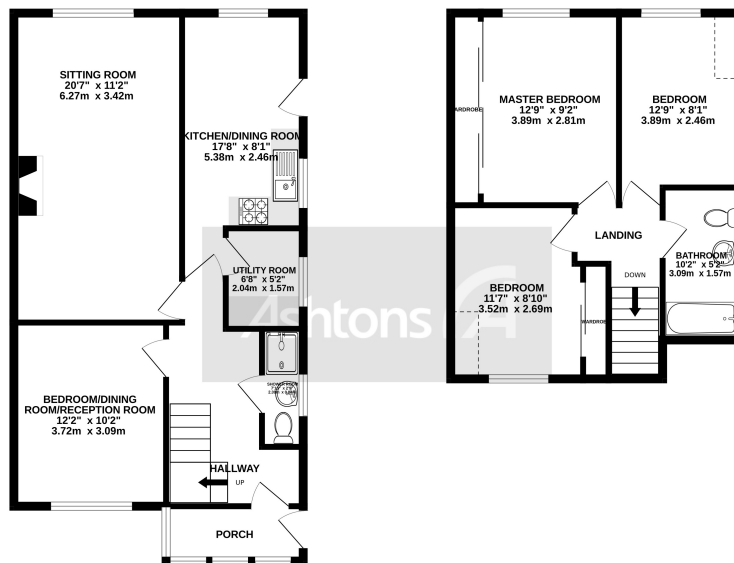
*27 Lowfield Lane, St Helens, Merseyside. WA9 5BE.  
Offers Over £215,000*

Great side plot | Four bedrooms | Driveway | Downstairs WC | Freehold | Great location | Beautifully presented | Council Tax - C | No Chain | EPC - D |



GROUND FLOOR  
659 sq.ft. (61.2 sq.m.) approx.

1ST FLOOR  
455 sq.ft. (42.3 sq.m.) approx.



TOTAL FLOOR AREA: 1114 sq.ft. (103.5 sq.m.) approx.

While every attempt has been made to ensure the accuracy of the floorplan contained here, measurements of doors, windows, rooms and any other items are approximate and no responsibility is taken for any error, omission or mis-statement. This plan is for illustrative purposes only and should be used as such by any prospective purchaser. The prices, deposits and appliances shown have not been tested and no guarantee as to their quantity or reliability can be given.  
Made with Metropix ©2021

Ashtons welcome to the market this Four Bedroom Semi Detached situated in on a popular area of St Helens , close to local amenities, shops and schools . Available with no onward chain.

The property briefly comprises: entrance hallway, downstairs WC , downstairs bedroom / second sitting room , spacious lounge , modern kitchen dining area . To the first floor there are three bedrooms with family bathroom . Externally there is a large corner plot with garden area to the front and side and of road parking to the rear . Early viewings are advised and can be arranged on 01744 754120.

Get a Mortgage: We have an Independent Mortgage Advisor based in EVERY Ashtons Office. We can search over 90 lenders to ensure that we find the most suitable mortgage for your circumstances. Interested? Call your local office on 01925 479334 for a chat. AS A MORTGAGE IS SECURED AGAINST YOUR HOME, IT COULD BE REPOSSESSED IF YOU DO NOT KEEP UP THE MORTGAGE REPAYMENTS



### Contact your local office to arrange a viewing:

- Padgate: 01925 479334
- Great Sankey: 01925 454300
- Winwick: 01925 232146
- Stockton Heath: 01925 453400
- St.Helens: 01744 754120
- Wigan: 01942 498862
- Culcheth: 01925 764744
- Ashton-In-Makerfield: 01942 364446
- Newton-Le-Willows: 01925 907770
- Commercial Office: 01925 907709
- Lettings Head Office: 01925 873533
- Financial Services: 01925 221234

### Viewing Arrangements

Viewing is strictly by appointment only through Ashtons Estate Agency.

### Disclaimer Property Details

These particulars, whilst being believed to be accurate are set out as a general outline only for guidance and do not constitute any part of an offer or contract. Intending purchasers should not rely on them as statements of representation of fact, but must satisfy themselves by inspection or otherwise as to their accuracy. We have not carried out a detailed survey nor tested the services, appliances and specific furnishings. The measurements given are approximate. No person in this firms employment has the authority to make or give any representation or warranty in respect of the property.

All details, photographs and floorplans are the copyright of Ashtons Estate Agency.



How much you can borrow?  
Speak to a mortgage expert in your local office.

Ashtons Financial Services

Ashtons.net rightmove

PrimeLocation.com Zoopla.co.uk

