



316 Redwood Grove, Bedford MK42 9JL



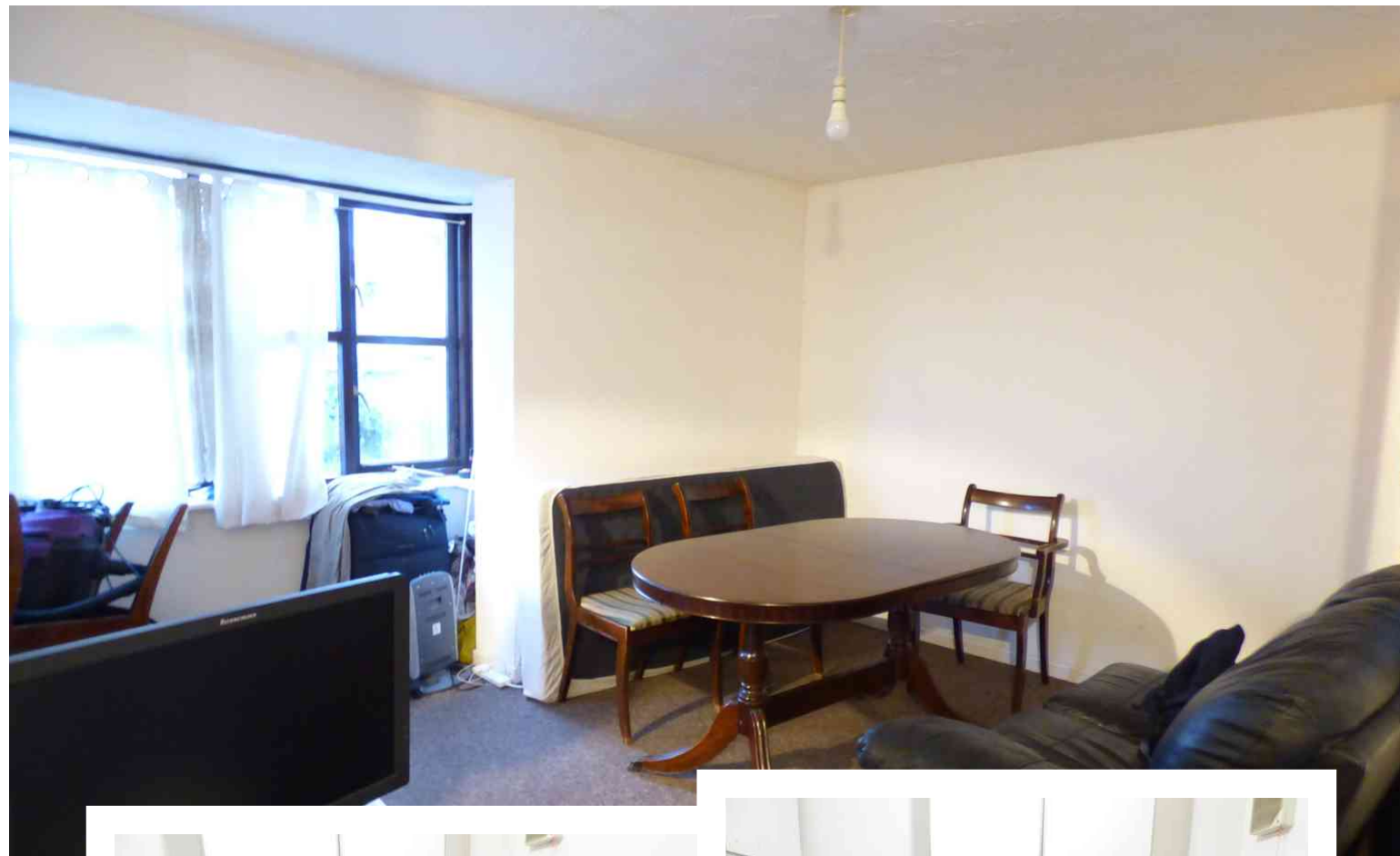
316 Redwood Grove
Bedford
MK42 9JL

£99,995

Studio apartment close to Bedford town Centre offered for sale, situated at the end of this development with secured entrance and allocated parking ideal for first time buyer or investment opportunity.

- Studio apartment
- Communal entrance hall
- Entrance hall
- Lounge /Diner
- Bedroom area
- Bathroom
- Allocated parking space

- Council Tax Band A
- Energy Efficiency Rating C



Close to Bedford town Centre



Studio apartment offered for sale in this popular location close to all amenities, entered via a secured entrance door with stairs leading to the first floor, flat's own door leads into the hallway, the lounge diner is spacious with the kitchen leading from the lounge area which is fitted with base and eye level units and space for under worktop fridge and space for washing machine, bedroom area is located off the lounge.

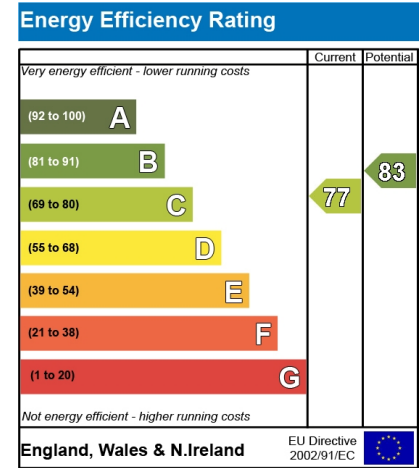
On the outside the allocated parking.

Ground Rent: £167.82 per year

Service Charge: £1,451.16

Lease: 99 years from 1991





01234 856684 | sales@waldens.co.uk | www.waldens.co.uk | 188-190 Bedford Road, Bedford, MK42 8BL

Waldens Estate Agents Limited for themselves and for the vendors or lesser of this property whose agents are to give notice that the particulars are produced in good faith and are set out as a general guide only and do not constitute any part of a contract and no person in the employment of Waldens Estate Agents Limited has any authority to make or give any representation or warranty or relation to this property.

