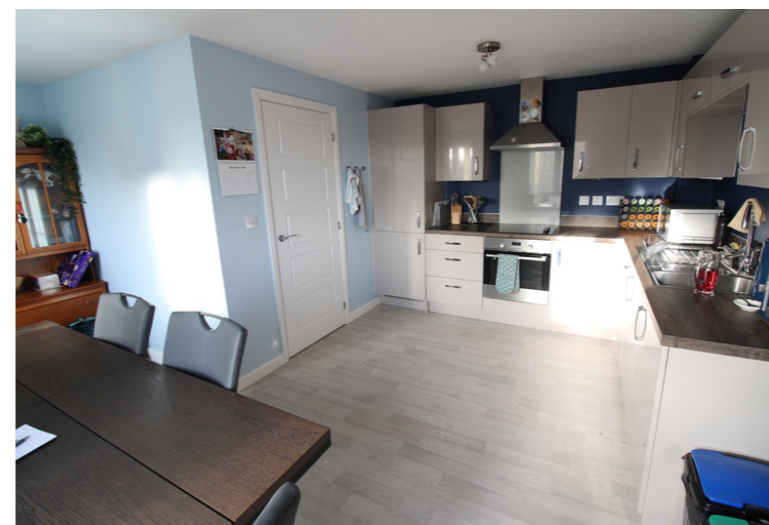




Day & Co  
ESTATE AGENTS

28 Cavendish Street  
Keighley  
BD21 3RG



33 Staincliffe Drive, Keighley,  
West Yorkshire, BD22 6FF

£200,000

T: 01535 664609

W: [www.dayandcoestateagents.co.uk](http://www.dayandcoestateagents.co.uk)

E: [keighley@dayandcoestateagents.co.uk](mailto:keighley@dayandcoestateagents.co.uk)

- EPC Rating Is C
- Three Bedrooms & Master En-Suite
- Drive & Garage

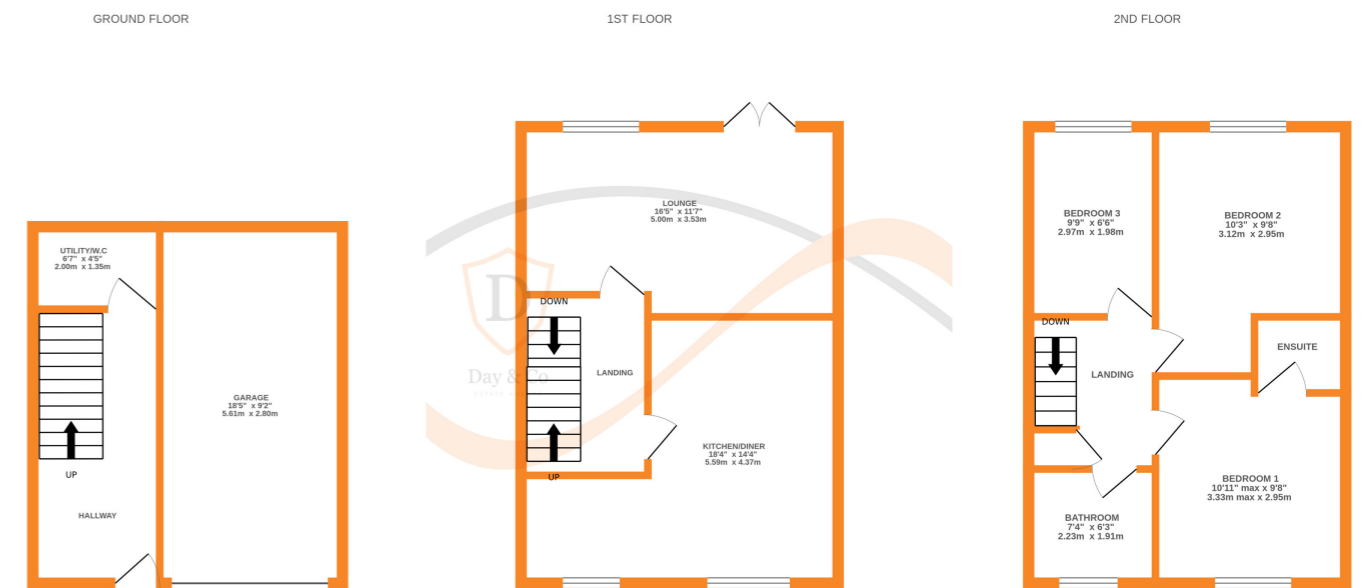
- Modern Semi-Detached Property
- Accommodation Over Three Floors
- Enclosed Rear Garden/Far Reaching Views

## SUMMARY

**\*\*A 3 BEDROOM (MASTER EN-SUITE) MODERN SEMI-DETACHED PROPERTY, POPULAR RESIDENTIAL LOCATION WITH FAR REACING VIEWS TO THE FRONT!\*\*** Having accommodation over 3 floors, drive, garage, enclosed rear garden & decking - EXCELLENT ACCESS TO LOCAL SCHOOLS!! EPC rating is C.

## FULL DESCRIPTION

Of interest to a variety of buyers is this modern three bedroom semi-detached property situated on this popular development with excellent access to local schools and far reaching views to the front. The three storey accommodation comprises of an entrance hall giving access to a utility room having plumbing for an automatic washing machine, sink, WC. To the first floor the dining kitchen has a range of modern base and wall mounted units, integrated appliances to include oven, hob, extractor fan, fridge, freezer, dishwasher, two double glazed windows to the front. The lounge has double glazed patio doors leading to the rear garden. To the first floor there are three bedrooms, the master having an en-suite shower room with shower cubicle, WC, wash hand basin. The house bathroom is also on this level having a three piece suite comprising of a bath with shower over, WC, wash hand basin. Externally a driveway leads to an attached garage, there is an enclosed rear garden with raised decking. far reaching views to the front, EPC rating is C.



Whilst every attempt has been made to ensure the accuracy of the floorplan contained here, measurements of doors, windows, rooms and any other items are approximate and no responsibility is taken for any error, omission or mis-statement. This plan is for illustrative purposes only and should be used as such by any prospective purchaser. The services, systems and appliances shown have not been tested and no guarantee as to their operability or efficiency can be given.  
Made with Metropix ©2024