

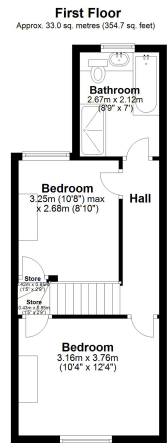
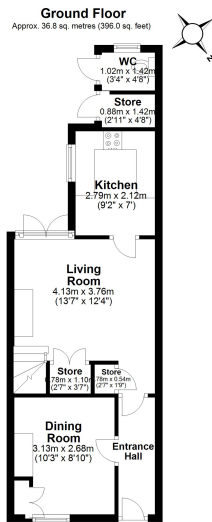
Rochford Road, Chelmsford
£375,000 Freehold

- Central Location
- Stunning Parks and Walks
- Private Rear Garden
- Character property
- Excellent Transport Links
- City Centre Shopping
- Well maintained Throughout

GUIDE PRICE £375,000 - £385,000

Situated close to the city centre is this beautifully presented two bedroom character home. The accommodation comprises a living room with feature fireplace, dining room also with feature fireplace & spacious fitted kitchen with space for appliances. The modern First floor bathroom has a four piece suite and features a separate bath and shower cubicle, two double bedrooms. Externally the front garden is retained by a rough iron railing and retaining brick dwarf wall, the rear garden is south facing and has been landscaped to provide a low maintenance mediterranean style space.

VIEWINGS ADVISED TO TRUELY APPRECIATE THIS STUNNING HOME



Total area: approx. 69.7 sq. metres (750.7 sq. feet)