



## Ramblers Way, Welwyn Garden City, Hertfordshire, AL7 2JX

**£239,000**

- ONE BEDROOM GROUND FLOOR
- OWN ENTRANCE
- CHAIN FREE
- GOOD DECORATIVE ORDER THROUGHOUT
- 992 YEAR LEASE
- MODERN APARTMENT
- PRIVATE GARDEN
- WALKING DISTANCE TO SHOPS
- SUITABLE FOR FIRST TIME BUYERS / INVESTORS

108, High Street, Potters Bar, EN6 5AT

01707 245 555

[www.home-counties.com](http://www.home-counties.com)

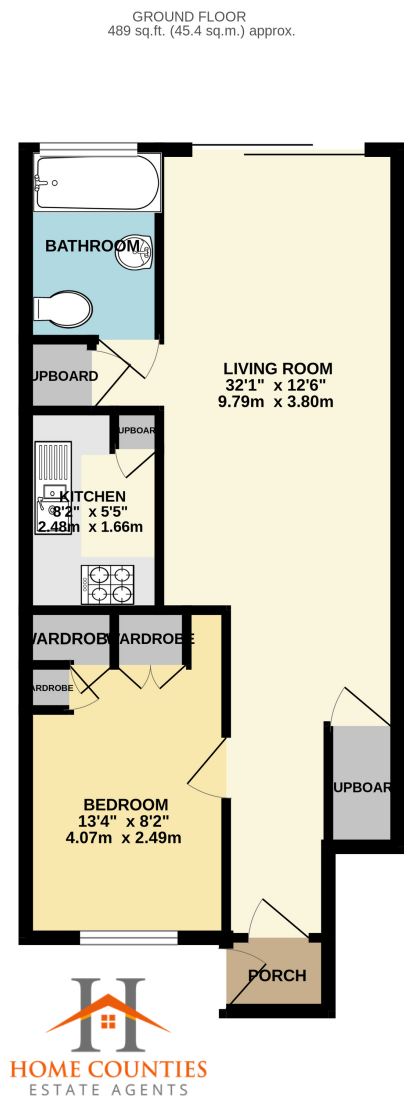


# Ramblers Way, Welwyn Garden City, Hertfordshire, . AL7

## £239,000 Leasehold

One-Bedroom Maisonette in a Quiet Cul-De-Sac This delightful one-bedroom ground floor maisonette is finished in excellent decorative order throughout, offering a stylish and modern living space with doors leading out on to a private garden. The property features fitted kitchen, contemporary bathroom, and a spacious bedroom. The large open-plan lounge and dining area seamlessly extends onto a private garden, creating the perfect space for relaxation and entertaining.

Ideally located for Shire Park and the A1(M), this home is also within easy reach of shops and the train station, offering direct links to Finsbury Park and London King’s Cross. An internal viewing is highly recommended.



TOTAL FLOOR AREA : 489 sq.ft. (45.4 sq.m.) approx.

Whilst every attempt has been made to ensure the accuracy of the floorplan contained here, measurements of doors, windows, rooms and any other items are approximate and no responsibility is taken for any error, omission or mis-statement. This plan is for illustrative purposes only and should be used as such by any prospective purchaser. The services, systems and appliances shown have not been tested and no guarantee as to their operability or efficiency can be given.

Made with Metropix ©2025

