

Cheddar Woods

Cheddar, BS27 3DB

COOPER
AND
TANNER



£150,000 Leasehold

This two bedroom stylishly furnished holiday lodge/second home is in an elevated favoured location on this awarding winning Cheddar Woods and Spa resort. Offering a clever space for relaxing and entertaining with great southerly views to the front.

Cheddar Woods

Cheddar

BS27 3DB



£150,000 Leasehold

DESCRIPTION

Open plan and bright, the lodge offers a clever space, perfect for relaxing and entertaining. There is an entrance hall with a utility area and space for dressing table. The kitchen is well designed and is fitted with wall and base units, integrated appliances, electric oven and a gas hob. There are steps up to the modern living room with ample space for the modern furniture and dining room table and chairs. This area has French doors opening out onto the decking. To the rear of the lodge, the master bedroom is fitted with double wardrobes and has a good size en suite shower room complete with vanity basin and low level WC. The second double bedroom benefits from fitted double wardrobe. The modern family bathroom is fitted with a vanity basin, low level WC, panelled bath with shower attachment and shower screen. The lodge is a Pathfinder Highview which is an individual design split level property. The vendor has also paid all site fees until the end of February 2025.

OUTSIDE

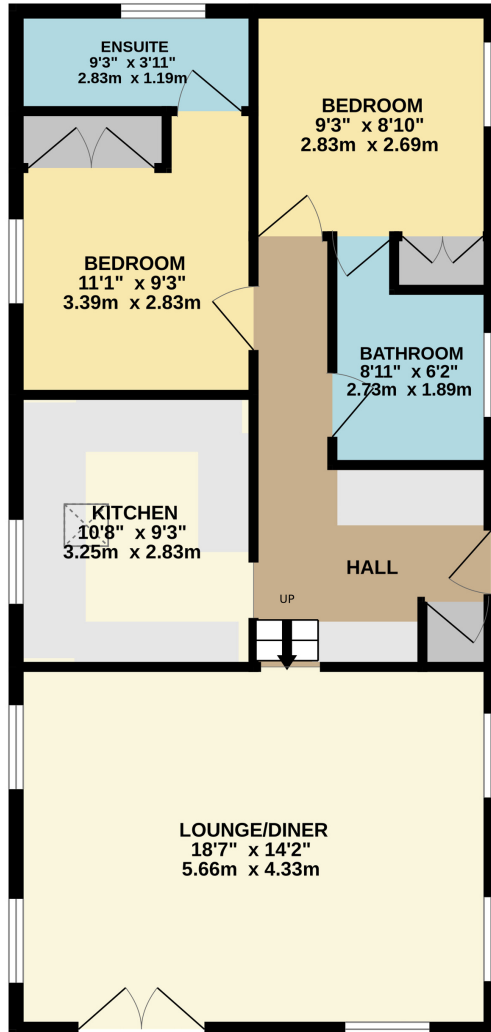
Outside the lodge, you can relax on the spacious balcony, complete with rattan furniture, enjoying southerly views to the front. You also have allocated block paved parking.

On site there are plenty of amenities, something to please everyone! Ranging from facilities such as tennis, basketball, five-a-side football, climbing walls, a farm shop heated swimming pool sauna and steam room, fitted gymnasium, spas, golf simulator, ten pin bowling, restaurant and bar. There really is something for all the family to enjoy. Cheddar Woods is the ideal location for a family get away.





GROUND FLOOR
740 sq.ft. (68.8 sq.m.) approx.



TOTAL FLOOR AREA: 740 sq.ft. (68.8 sq.m.) approx.

Whilst every attempt has been made to ensure the accuracy of the floorplan contained here, measurements of doors, windows, rooms and any other items are approximate and no responsibility is taken for any error, omission or mis-statement. This plan is for illustrative purposes only and should be used as such by any prospective purchaser. The services, systems and appliances shown have not been tested and no guarantee as to their operability or efficiency can be given.
Made with Metropix ©2024

CHEDDAR OFFICE

Telephone 01934 740055

Unit 2, Union Street, Cheddar, Somerset BS27 3NA

cheddar@cooperandtanner.co.uk

COOPER
AND
TANNER

Important Notice: These particulars are set out as a general outline only for the guidance of intended purchasers and do not constitute, nor constitute part of, an offer or contract. All descriptions, dimensions, reference to condition and necessary permissions for use and occupation, warranties and other details are given without responsibility and any intending purchasers should not rely on the m as statements or representations of fact but must satisfy themselves by inspection or otherwise as to the correctness of each of them.

