



1 Turpins Way, Baldock, Hertfordshire, SG7 6LW

£550,000


Lane & Bennetts offer to the market this fabulous four bedroom family home. Extended beyond the original design to add a master bedroom with en suite, study, downstairs shower room and large utility. This home has ample off-road parking plus garage and a low maintenance, wrap around garden with patio areas. The property has been well maintained throughout and offers the potential for a new owner to modernise. Located in a popular road, just a 5 minute walk from the high street, less than a mile from the station and 200m to the delightful Weston Woods.



- FOUR BEDROOM FAMILY HOME
- KITCHEN / DINER OPENING ONTO THE GARDEN
- LARGE LOUNGE ROOM
- SIZABLE STUDY , UTILITY & CLOAKROOM
- MASTER BEDROOM WITH EN SUITE
- AMPLE OFF ROAD PARKING & GARAGE
- LOW MAINTENANCE WRAP AROUND GARDEN
- LESS THAN A MILE TO STATION
- WITHIN 1KM "GOOD" PRIMARY & SECONDARY SCHOOLS
- JUST 200M TO THE WESTON WOODLANDS
- Tenure: FREEHOLD | EPC: D | Council Tax Band: D

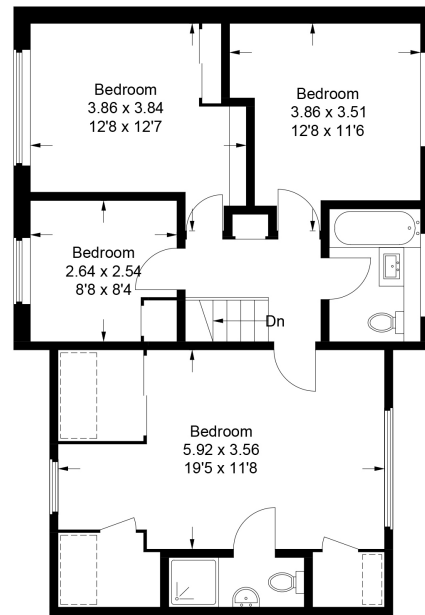
Approximate Gross Internal Area
 Ground Floor = 87.3 sq m / 940 sq ft
 First Floor = 68.8 sq m / 740 sq ft
 Total = 156.1 sq m / 1,680 sq ft



 = Reduced headroom below 1.5m / 5'0"



Ground Floor



First Floor

This plan is for layout guidance only. Not drawn to scale unless stated. Windows and door openings are approximate. Whilst every care is taken in the preparation of this plan, please check all dimensions, shapes and compass bearings before making any decisions reliant upon them.
 © CJ Property Marketing Ltd Produced for Lane & Bennetts

