





Dunstan Court, Leacroft, Staines-upon-Thames, Surrey TW18 4NX
£169,950 - Leasehold



PROPERTY DESCRIPTION

CASH BUYERS ONLY PLEASE. A one bedroom GROUND FLOOR apartment in this sought after location within Staines Upon Thames. The property is approached by its own front door to the rear of flats and adjacent to the cottages. The accommodation offers a spacious dual aspect open plan kitchen/ diner and living room, good size double bedroom, bathroom and entrance hallway, secure allocated parking behind electric roller shutter door. The apartment also benefits from gas central heating and double glazed windows. Staines town centre and train station are within easy walk distance. The property currently has a 58 year lease but represents a good opportunity for investment buyers. Offered with NO ONWARD CHAIN.

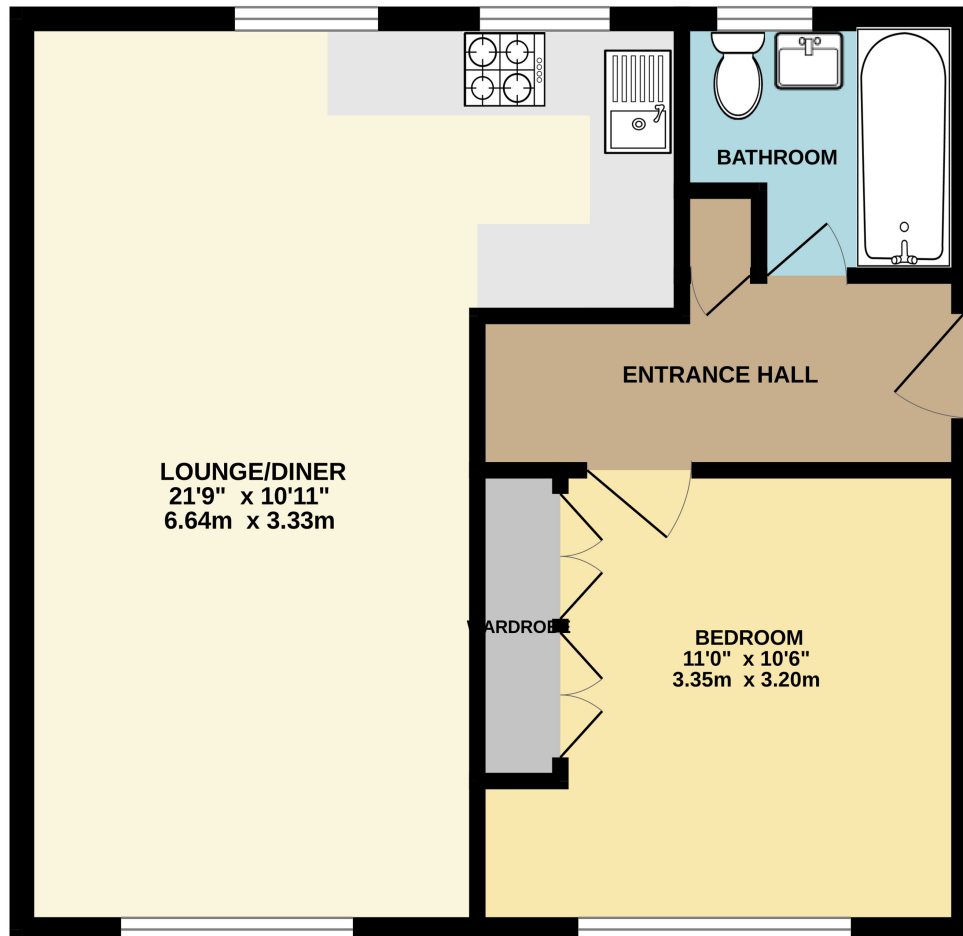
POINTS OF INTEREST

- Ground floor apartment
- One double bedroom
- Spacious living accommodation
- Gas central heating
- Allocated parking
- Walking distance to station
- Close to Staines town centre
- NO CHAIN





GROUND FLOOR
490 sq.ft. (45.5 sq.m.) approx.



TOTAL FLOOR AREA : 490 sq.ft. (45.5 sq.m.) approx.

Whilst every attempt has been made to ensure the accuracy of the floorplan contained here, measurements of doors, windows, rooms and any other items are approximate and no responsibility is taken for any error, omission or mis-statement. This plan is for illustrative purposes only and should be used as such by any prospective purchaser. The services, systems and appliances shown have not been tested and no guarantee as to their operability or efficiency can be given.
Made with Metropix ©2025