

Swallowdale Place

Westbury, BA13 4FN

COOPER
AND
TANNER



£230,000

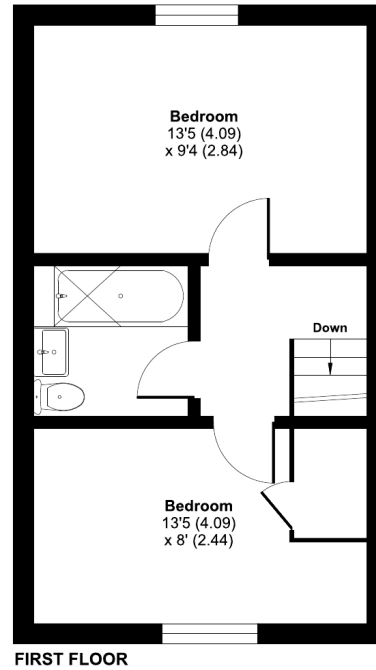
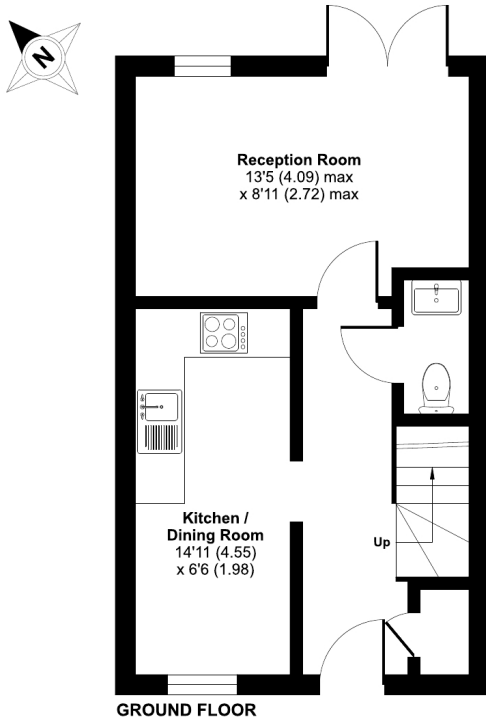
🛏️ 2 🛋️ 1 🚿 1 EPC B

Description

This pleasing two bedroom mid terrace residence is located on the new Spinnaker development that is on the outskirts of Westbury in Wiltshire and next to the sailing lake. The home is also close to views over the lake, and countryside walks. A walkway on the estate gives access to the Train Station without the need to go on the main road. The accommodation comprises a hall, ground floor WC, kitchen / dining room, Sitting room, landing, two bedroom, family bathroom, gas central heating and double glazing. At the front are two exclusive parking bays. At the rear is a generous rear garden with lawn, fencing and a patio, rear access gate.

Swallowdale Place, Westbury, BA13

Approximate Area = 670 sq ft / 62.2 sq m
For identification only - Not to scale



Floor plan produced in accordance with RICS Property Measurement Standards incorporating International Property Measurement Standards (IPMS2 Residential). © nichecom 2024. Produced for Cooper and Tanner. REF: 1183320



Features

- Easy access to Station
- Two bedrooms
- Two parking spaces
- Double glazed
- Gas central heating
- New development
- Popular address
- Rear garden
- Close to sailing lake and walks
- Ideal FTB / Investment

Local Information

- Council Tax Band B
- Tenure
- EPC Rating B

WARMINSTER OFFICE

Telephone 01985 215579

48-50, Market Place, Warminster, Wiltshire BA12 9AN

warminster@cooperandtanner.co.uk

**COOPER
AND
TANNER**

Important Notice: These particulars are set out as a general outline only for the guidance of intended purchasers and do not constitute, nor constitute part of, an offer or contract. All descriptions, dimensions, reference to condition and necessary permissions for use and occupation, warranties and other details are given without responsibility and any intending purchasers should not rely on the m as statements or representations of fact but must satisfy themselves by inspection or otherwise as to the correctness of each of them.

