

# FOR SALE

---

100 - 102 Chiswick High Road,  
Chiswick, W4

---

Flat  
Chiswick

---

£600,000 lh

---

1  1  1 



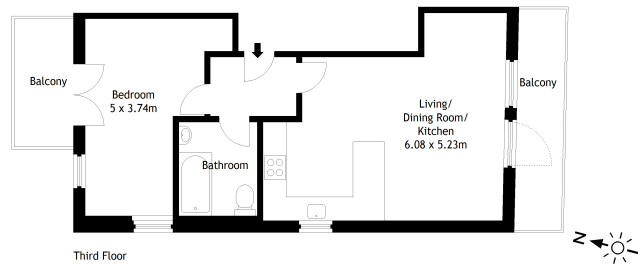
**horton  
andgarton**

SALES / LETTINGS / PROPERTY MANAGEMENT

hortonandgarton.co.uk | Sales 020 3989 6464 | Lettings 020 3989 5454  
161 Chiswick High Road, London, W4 2DT



**horton  
and garton**



Flat 6  
Chiswick High Road, London W4

Gross Internal Area 49.54 sq m - 533.26 sq ft

Drawn from supplied plans. All measurements are approximate.  
This floor plan is for illustrative purposes only and is not to scale.  
© Horton and Garton Estate Agents 2026



Boutique development in Central Chiswick | One  
bedroom - One bathroom | 533.26 Sq' - 49.54 SqM |  
EPC rating B | Two terraces with panoramic views |  
Chiswick



hortonandgarton.co.uk  
Sales 020 3989 6464  
Lettings 020 3989 5454

161 Chiswick High Road, London, W4 2DT