

maloco
mowat
parker

Solicitors & Estate Agents

3

Bennachie Way, Dunfermline, KY11 8JA



Working harder for you

Quote



4 bedrooms



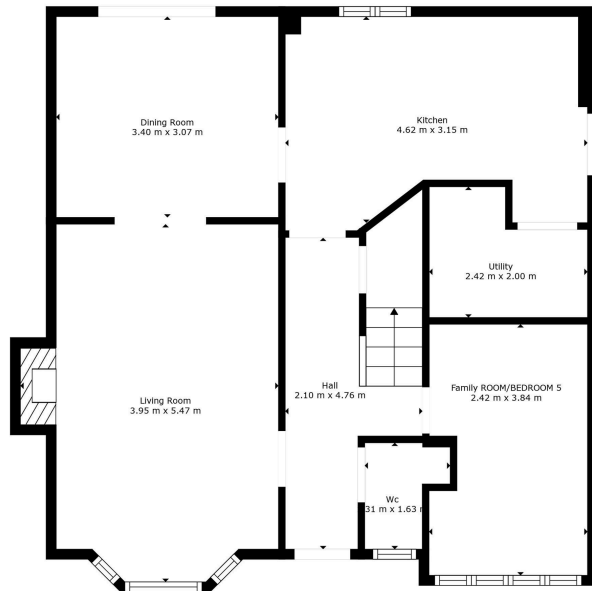
3 public



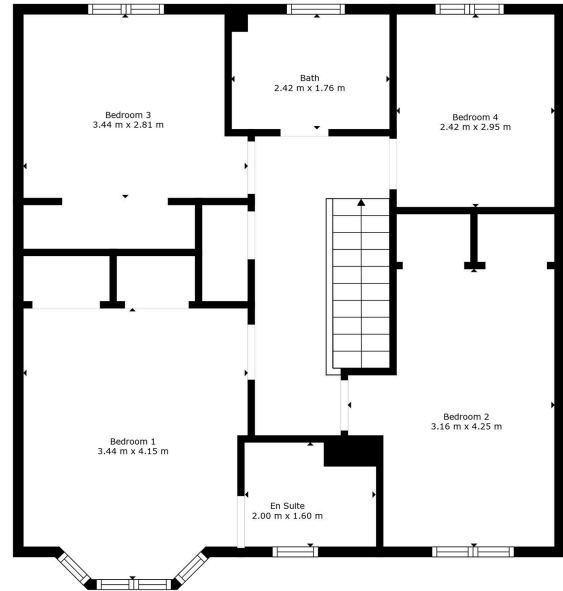
2 bathrooms



- + A spacious four-bedroom villa, located within a sought-after residential development close to a variety of amenities and well-regarded schooling
- + A perfect setting, ideal for families, sitting on the outskirts of Calais Muir Woods with various supermarkets, restaurants and leisure facilities within easy access of the property. Fife Leisure Park offers additional amenities including a ten-screen cinema, various coffee shops and additional leisure facilities
- + Local primary schooling within walking distance and secondary schooling within Dunfermline with bus links available
- + Transport links include several local train stations, Park and Ride facilities at Halbeath and Inverkeithing and the M90 motorway connecting Edinburgh and the North
- + Entrance hall with WC and a formal lounge leading to separate dining room with patio doors leading to gardens
- + Fully fitted kitchen benefitting from ample floor and wall mounted storage with excellent worktop space.
- + Master bedroom benefits from built in wardrobes and en suite shower room
- + Three additional double bedrooms and family bathroom with three-piece suite
- + Enclosed gardens to the rear, mostly laid to lawn and decked area
- + Driveway with parking for several cars
- + A sought a residential address and viewing comes highly recommended



Floor 1



Floor 2



Measurements Are Calculated By Cubicasa Technology. Deemed Highly Reliable But Not Guaranteed.



Living Room	3.95 m x 5.47 m / 13'0" x 17'11"	Bedroom 1	3.44 m x 4.15 m / 11'3" x 13'7"
Family Room	2.42 m x 3.84 m / 7'11" x 12'7"	Bedroom 2	3.16 m x 2.25 m / 10'4" x 7'5"
Dining Room	3.40 m x 3.07 m / 11'2" x 10'1"	Bedroom 3	3.44 m x 2.81 m / 11'3" x 9'3"
Kitchen	4.62 m x 3.15 m / 15'2" x 10'4"	Bedroom 4	2.42 m x 2.95 m / 7'11" x 9'8"
Utility Room	2.42 m x 2.00 m / 7'11" x 6'7"		



Sharing is caring!

6/8 Bonnar Street,
Dunfermline KY12 7JR

T: 01383 629720 F: 01383 621333, DX DF69

espc

W: maloco.co.uk